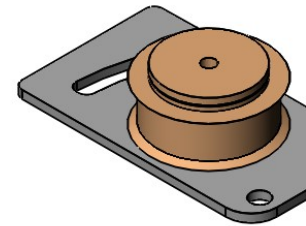
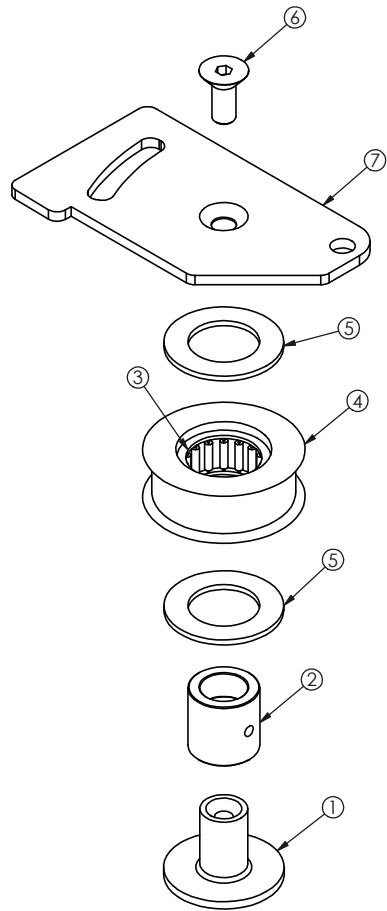


ITEM NO.	PART NUMBER	DESCRIPTION	QTY.
1	B10291	AXLE, TENSIONING PULLEY	1
2	H10121	INNER RACE, IDLER PULLEY	1
3	H10122/5905K26	Needle Bearing, Manual Shaft	1
4	DD-004	PULLEY, BELT TENSIONING	1
5	H10123/5906K517	Oillite Washer Belt Tensioner	2
6	KFC25C62/Z	1/4-20 x 5/8" SOC, FT, HD, SC	1
7	DD8-14	Belt Tensioner Bracket	1



HAMILTON BY GUNNEBO	PROPRIETARY AND CONFIDENTIAL THESE DRAWINGS ARE THE PROPERTY OF HAMILTON AND SHALL NOT BE REPRODUCED, COPIED, USED AS THE BASIS FOR MANUFACTURE OR SALE OF APPARATUS WITHOUT PERMISSION		TITLE BELT TENSIONING ASSEMBLY	
	All Weld Notes Comply With AWS A2.4-98 Standards		PART NUMBER DD8-SA-023	FINISH
	DRAWN BY	DATE	CHECKED BY	DATE