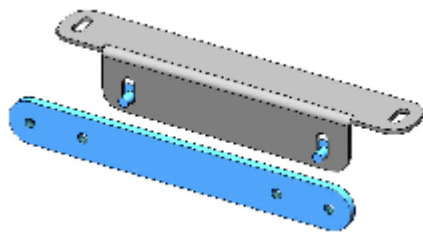
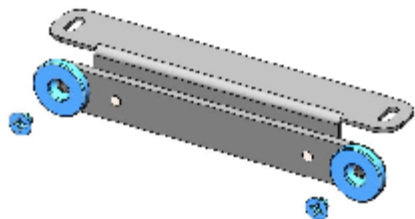


STEP 1: START WITH DOOR GUIDE MOUNT ITEM# (3)

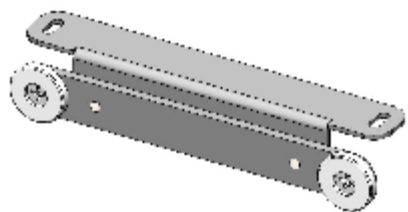
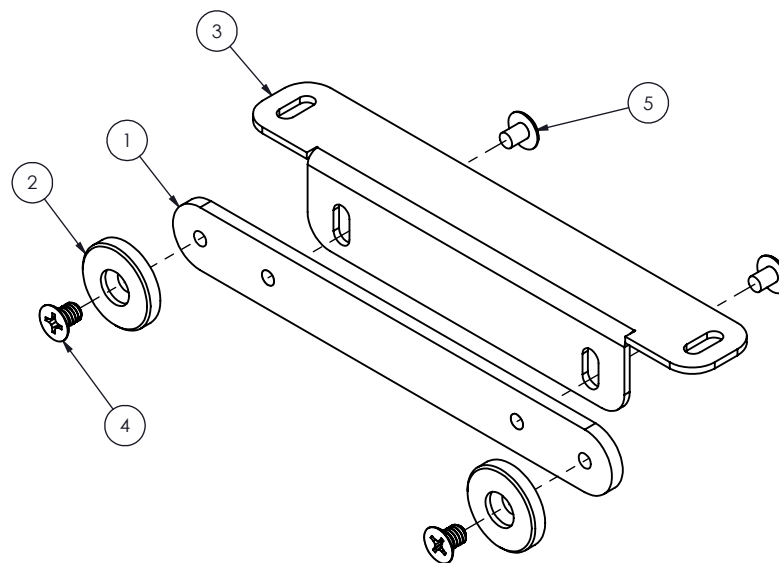
ITEM NO.	PART NUMBER	GAGE	DESCRIPTION	QTY.
1	DD8-94-1	11GA SS	MOUNT, WEAR PADS	1
2	BX-954		WEAR PAD	2
3	DD8-80-1	14 GA HRPO	MOUNT, DOOR GUIDE LEFT	1
4	MXF8C25/UCZ		8-32 X 1/4" PH, FT, HD, SC	2
5	MXT8C25/Z		8-32 X 3/16 PH, TRS, HD, SC	2



STEP 2: WITH (2) 8/32 x 3/16" SCREWS ITEM# (5) THROUGH SLOTS IN DOOR GUIDE MOUNT & SECURE WEAR PAD MOUNT ITEM# (1) TO ASSEMBLY.



STEP 2: WITH (2) SCREWS ITEM# (4) SECURE THE WEAR PADS ITEM# (2) TO THE WEAR PAD MOUNT.



STEP 3: STEP ASSEMBLY ASIDE FOR LATER ASSEMBLING THE REAR DOOR.

est. 1967 <b>HAMILTON</b> CUSTOM MADE SECURITY	PROPRIETARY AND CONFIDENTIAL THESE DRAWINGS ARE THE PROPERTY OF HAMILTON SAFE CO. AND SHALL NOT BE REPRODUCED, COPIED, USED AS THE BASIS FOR MANUFACTURE OR SALE OF APPARATUS WITHOUT PERMISSION	TITLE GUIDE ASSEMBLY RIGHT, REAR DOOR	
	All Weld Notes Comply With AWS A2.4-98 Standards	PART NUMBER DD8-SA-014	
DRAWN BY DPC	DATE 2/3/2021	CHECKED BY	DATE  REVISION