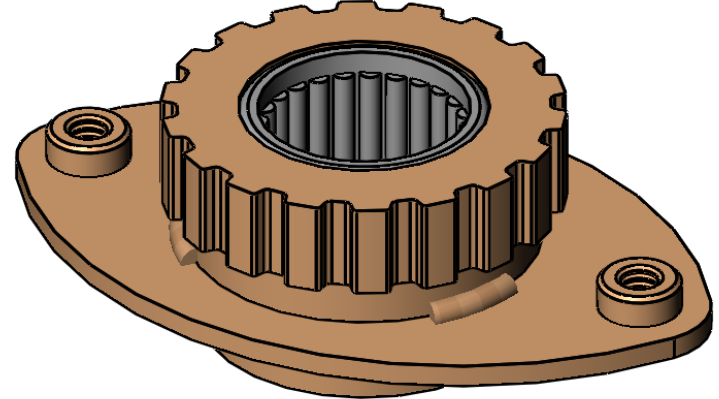
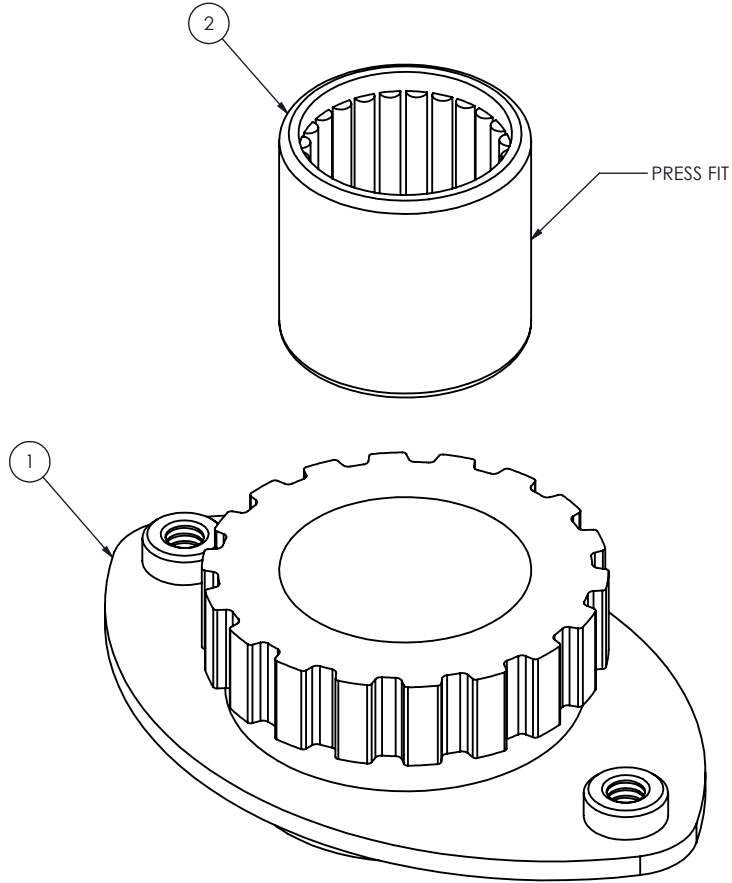


STEP 1: USING ARBOR PRESS, PRESS ITEM# 2 INTO ITEM# 1 TILL FLUSH WITH TOP OF GEAR.

| ITEM NO. | PART NUMBER | DESCRIPTION | QTY. |
|----------|-------------|------------------------|------|
| 1 | DD8-WSA-004 | MID ARM PHASE ADJUSTER | 1 |
| 2 | BHA-1620 | NEEDLE BEARING | 1 |



.125 3x 0.5

| | | | | |
|--|--|-------------------------------------|------|----------|
| est. 1967 HAMILTON CUSTOM MADE SECURITY | PROPRIETARY AND CONFIDENTIAL THESE DRAWINGS ARE THE PROPERTY OF HAMILTON SAFE CO. AND SHALL NOT BE REPRODUCED, COPIED, USED AS THE BASIS FOR MANUFACTURE OR SALE OF APPARATUS WITHOUT PERMISSION All Weld Notes Comply With AWS A2.4-98 Standards | TITLE | | |
| | | MID ARM PHASE ADJUSTER SUB-ASSEMBLY | | |
| | | PART NUMBER | | |
| | | DD8-SA-003 | | |
| DRAWN BY | DATE | CHECKED BY | DATE | REVISION |
| DPC | 8/31/2020 | | | |