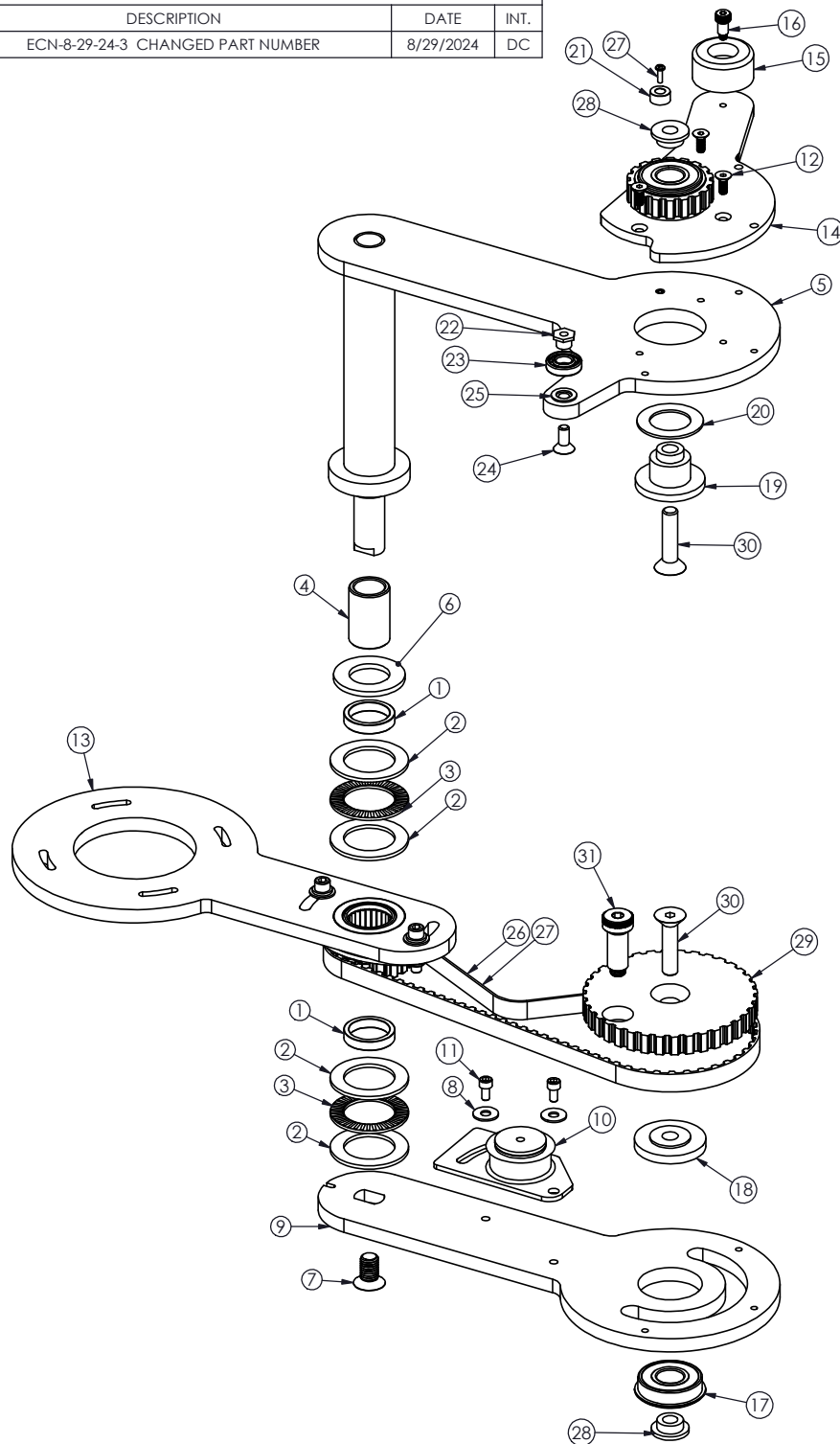


Revision Table

REV.	DESCRIPTION	DATE	INT.
A	ECN-8-29-24-3 CHANGED PART NUMBER	8/29/2024	DC



ITEM NO.	PART NUMBER	DESCRIPTION	QTY.
1	DD-015	SPACER, MAIN ARM	2
2	H10115	THRUST WASHER	4
3	H10116	THRUST BEARING	2
4	H10118	INNER RACE, ARM PIVOT	1
5	DD8-WSA-003	SLCD UPPER ARM WELDMENT	1
6	H10117	Washer (Bearing Preload)	1
A 7	KFC37C75/UCS	3/8-16 X 3/4 UNDERCUT FT, HD	1
8	WSS25N-S	3/8" FLAT WASHER, 5/8OD X 1/32TH	2
9	DD8-10	Main Drive Arm	1
10	DD8-SA-023	BELT TENSIONING ASSEMBLY	1
11	KCS25C50/Z	1/4-20 x 1/2" SOC CAP SCREW	2
12	KFS10F50/Z	10-32 x 1/2" SOC FT HD SCREW	3
13	DD8-SA-021	OUTER ARM ASSEMBLY	1
14	DD8-SA-022	DRIVE BEARING ASSEMBLY	1
15	H1164 / 9540K36	REAR BUMPER	1
16	94361A112	Short-Thread Alloy Steel Shoulder Screw	1
17	6203-2RSNR	ARM MOUNT BEARING	1
18	DD8-23	Lower Drive Arm Bearing Retainer	1
19	DD8-22	Upper Drive Arm Bearing Retainer	1
20	5906K605	THRUST WASHER	1
21	9540K661	Unthreaded Bumper	1
22	DD-074	RETAINER, REAR DOOR DRIVE BEARING	1
23	H1064	Ball Bearings	1
24	KFC25C62/Z	1/4-20 x 5/8" SOC, FT, HD, SC	1
25	WSS37N-960I	3/8" FLAT WASHER, 5/8OD X 1/32TH	1
26	H1042	285L050 TIMING BELT	1
27	MXP4C37/Z	4-40 x 3/8 Phillips Pan (Zinc)	1
28	DD8-51	UPPER & LOWER ARM MOUNT SPACER	2
29	DD8-24	Main Drive Pulley	1
30	KFC37C162/Z	3/8 x 1-5/8" SOC, FT, HD, SC	2
31	94361A146	Short-Thread Alloy Steel Shoulder Screw	1

	PROPRIETARY AND CONFIDENTIAL THESE DRAWINGS ARE THE PROPERTY OF HAMILTON AND SHALL NOT BE REPRODUCED, COPIED, USED AS THE BASIS FOR MANUFACTURE OR SALE OF APPARATUS WITHOUT PERMISSION		TITLE ARM SUB-ASSEMBLY	
	PART NUMBER DD8-SA-002-1		FINISH	
	DRAWN BY DPC	DATE 1/27/2021	CHECKED BY	DATE