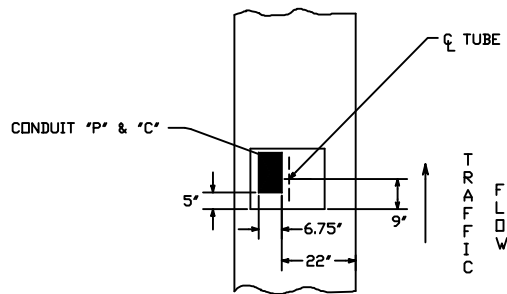
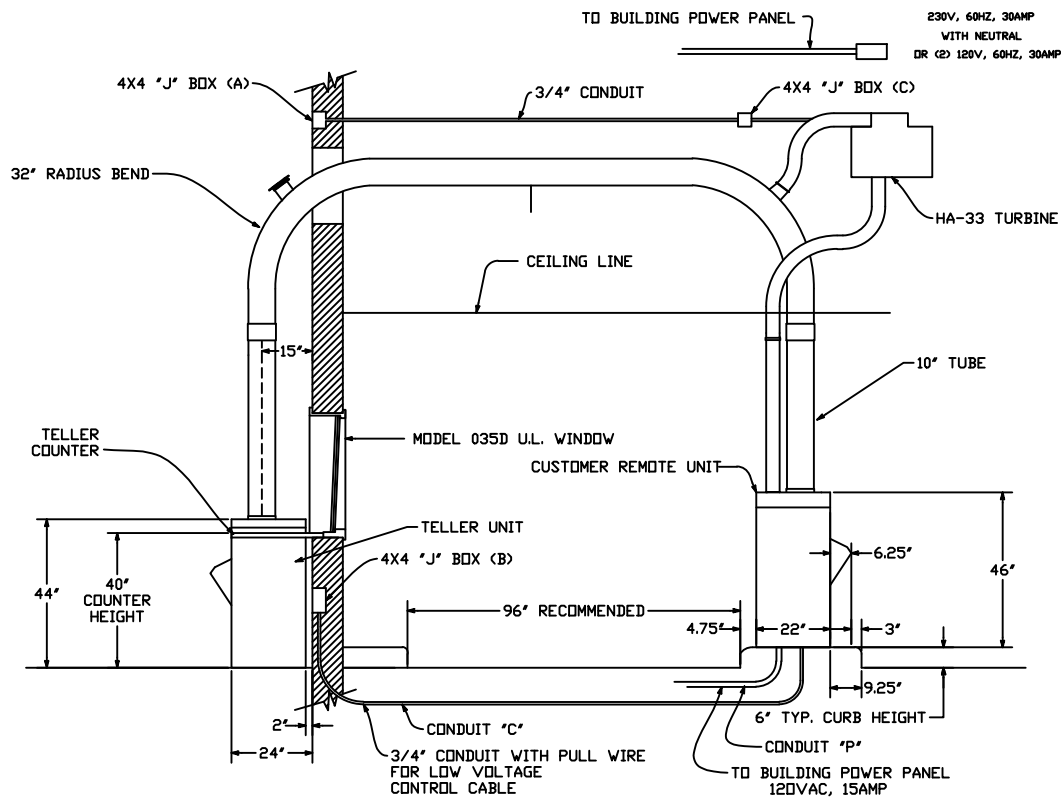


REV.-1	DATE: 6/19/00	MOVED TURBINE PLACEMENT
REV.-2	DATE: 10/4/00	ADDED NOTE
REV.-3	DATE: 5/16/11	Revised Cust. & Teller Unit Height



ISLAND DETAIL

(REFERENCE DRAWING NUMBER # 99-721)

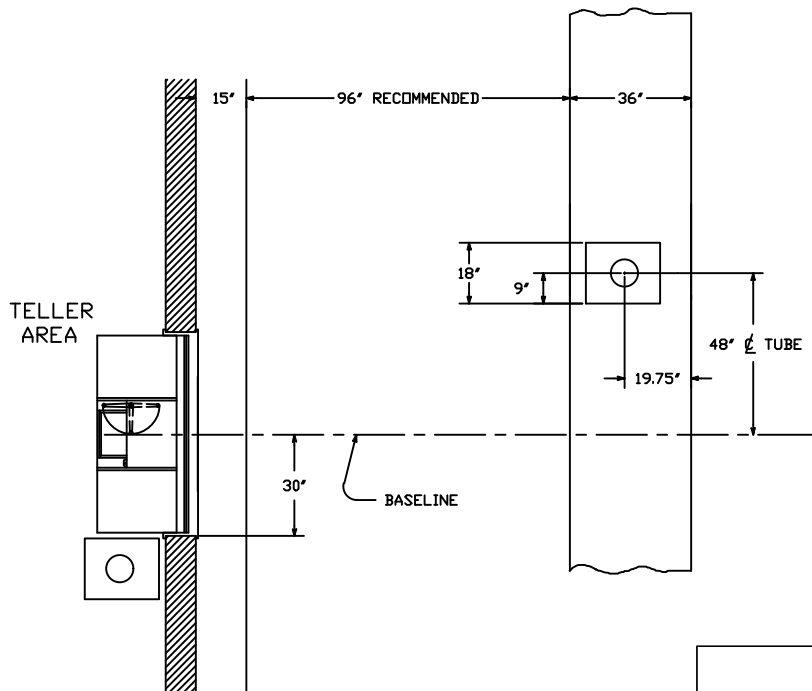


(REFERENCE DRAWING NUMBER # 99-719)

SECTION

CONDUIT REQUIREMENTS

- 1 - 3/4" WITH PULL WIRE FROM A TO C IN CANDPY
- 1 - 3/4" TO BUILDING POWER PANEL (230V AC 30AMP)
- 1 - 3/4" FROM A TO B (TELLER STATION)
- 1 - 3/4" FROM B TO CUSTOMER UNIT (UNDERGROUND) (CONDUIT C)
- 1 - 3/4" FROM CUSTOMER UNIT TO BUILDING POWER (CONDUIT P) 120V AC 15AMP



PLAN

est. 1967
HAMILTON
 CUSTOM MADE SECURITY

PROPRIETARY AND CONFIDENTIAL
 THESE DRAWINGS ARE THE PROPERTY
 OF HAMILTON SAFE CO. AND SHALL
 NOT BE REPRODUCED, COPIED, USED
 AS THE BASIS FOR MANUFACTURE OR
 SALE OF APPARATUS WITHOUT
 PERMISSION

DESCRIPTION	
MODEL HA-33-8 111 SYSTEM - UPSEND (8" TUBE SYSTEM)	
DRAWING/MODEL NUMBER	DATE
99-1191	8/30/2022