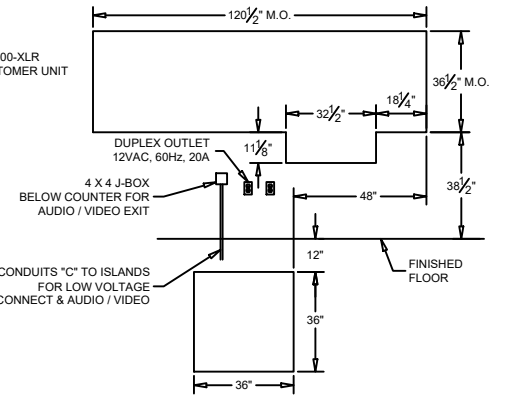
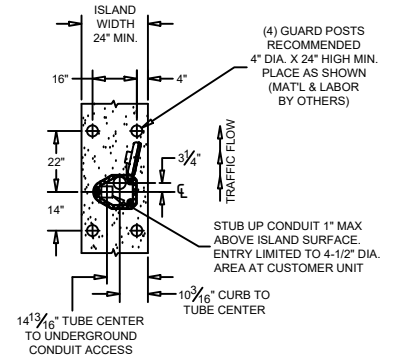
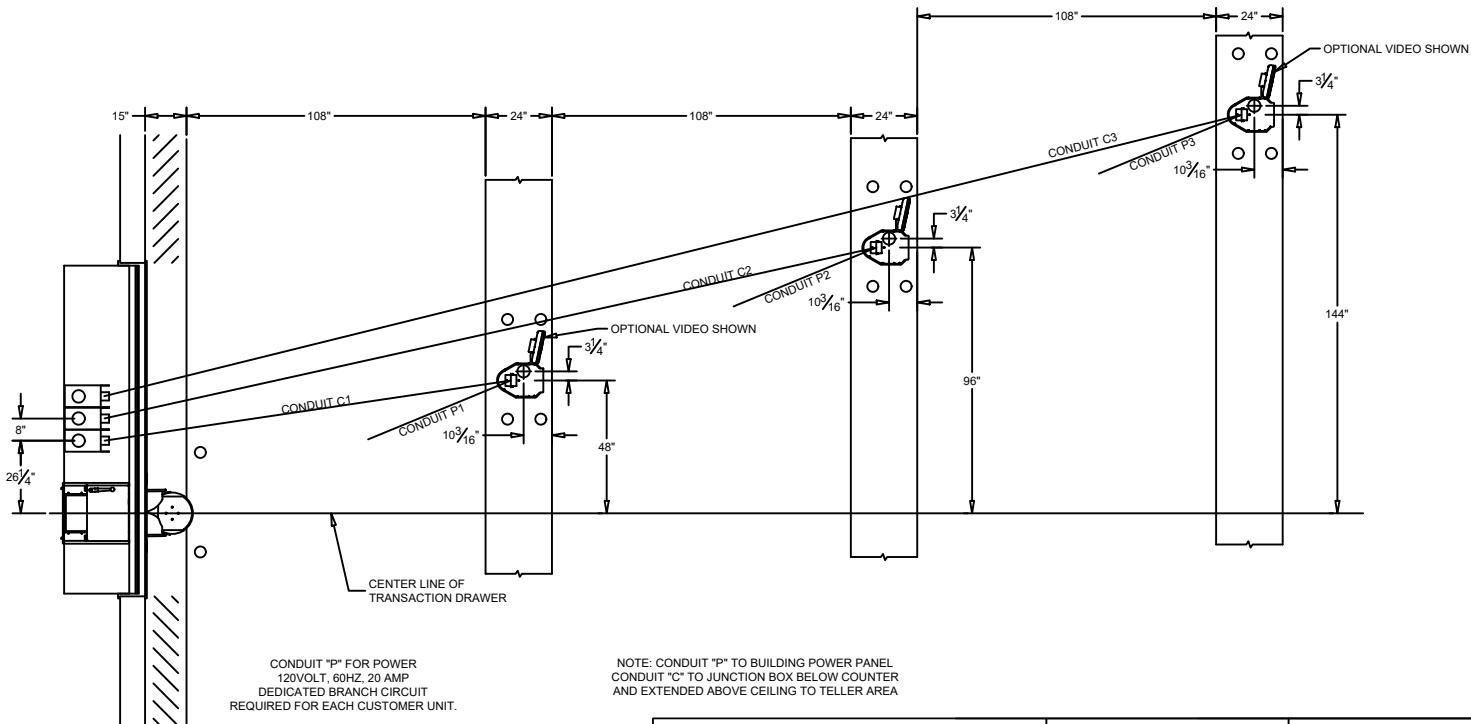


SECTION



MASONRY DETAIL
(FOR MODEL 310D U.L. WINDOW)



ISLAND DETAIL

ADDITIONAL DRAWINGS TO REFERENCE:
95-696, 99-349, & 99-1160

CONDUIT "P" FOR POWER
120VOLT, 60HZ, 20 AMP
DEDICATED BRANCH CIRCUIT
REQUIRED FOR EACH CUSTOMER UNIT.

NOTE: CONDUIT "P" TO BUILDING POWER PANEL
CONDUIT "C" TO JUNCTION BOX BELOW COUNTER
AND EXTENDED ABOVE CEILING TO TELLER AREA

PLAN

est. 1967
HAMILTON
CUSTOM MADE SECURITY

PROPRIETARY AND CONFIDENTIAL
THESE DRAWINGS ARE THE PROPERTY
OF HAMILTON SAFE CO. AND SHALL
NOT BE REPRODUCED, COPIED, USED
AS THE BASIS FOR MANUFACTURE OR
SALE OF APPARATUS WITHOUT
PERMISSION

DESCRIPTION
PNEUMATIC TUBE SYSTEMS
MODEL HA1000-XLRD
"312" SYSTEM - UNDERGROUND TUBING

REVISION DESCRIPTION
CHANGED LANE WIDTH TO 9', 400DD M.O. HEIGHT TO 11 1/8

DATE
6/8/2023

DRAWING/MODEL NUMBER
99-1167

DATE
10/8/2021