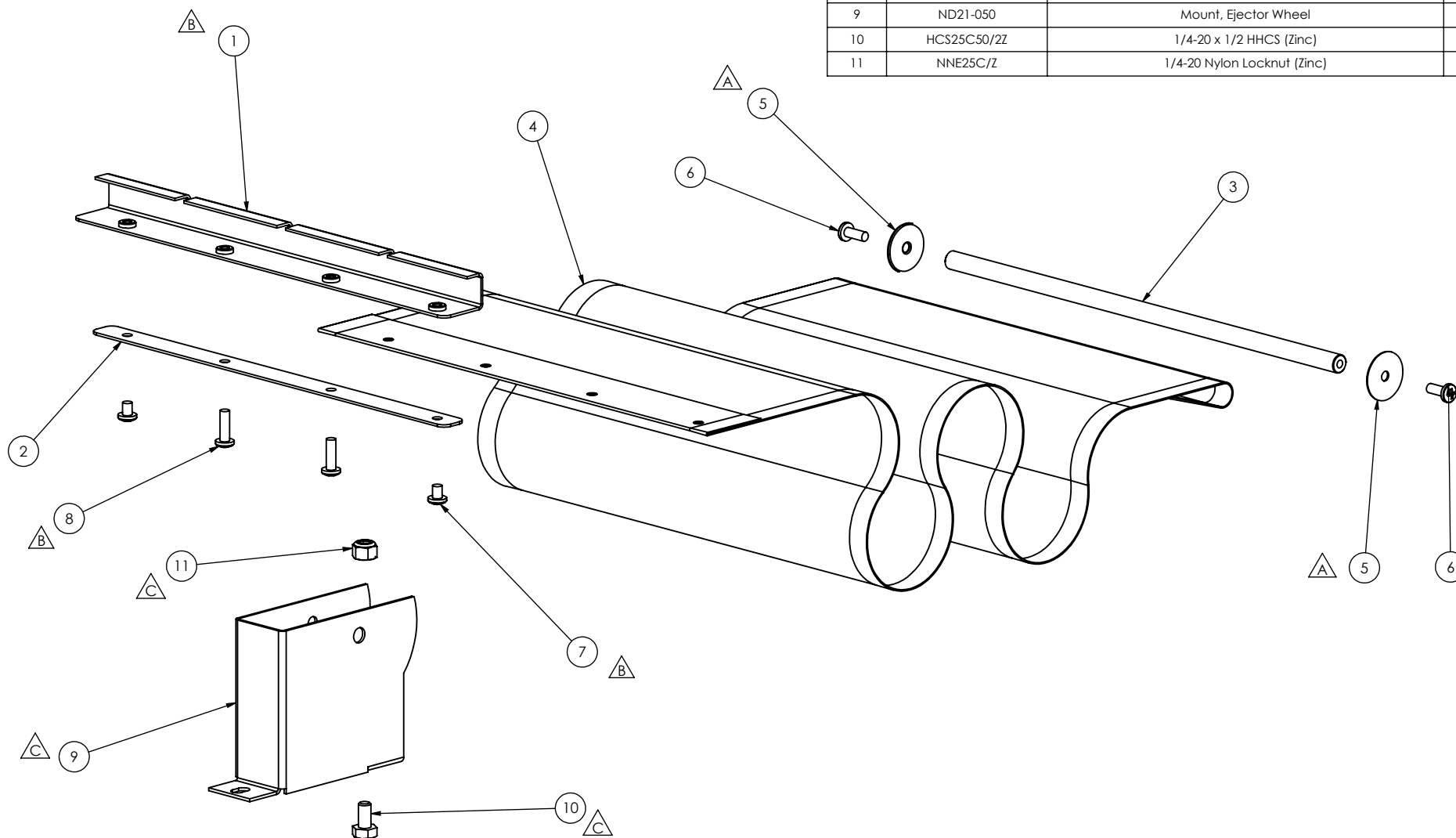


ITEM NO.	PartNo	DESCRIPTION	QTY.
1	ND21-208	Mounting Channel, Flex Chute on Original Design	1
2	ND21-202	Flex Chut Clamp Strip	1
3	B3569	Tie Rod, Flex Chute Upper	1
4	B8391-2	29" Long Extended Flex Chute	1
5	WFE10N100/Z	Fender Washer, #10 x 1"OD, Zinc	2
6	MXP10F50/Z	10-32 x 1/2 Phillips Pan (Zinc)	2
7	MXP10F25/Z	10-32 x 1/4 Phillips Pan (Zinc)	2
8	MXP10F62/Z	10-32 x 5/8 Phillips Pan MS (Zinc)	2
9	ND21-050	Mount, Ejector Wheel	1
10	HCS25C50/2Z	1/4-20 x 1/2 HHCS (Zinc)	1
11	NNE25C/Z	1/4-20 Nylon Locknut (Zinc)	1



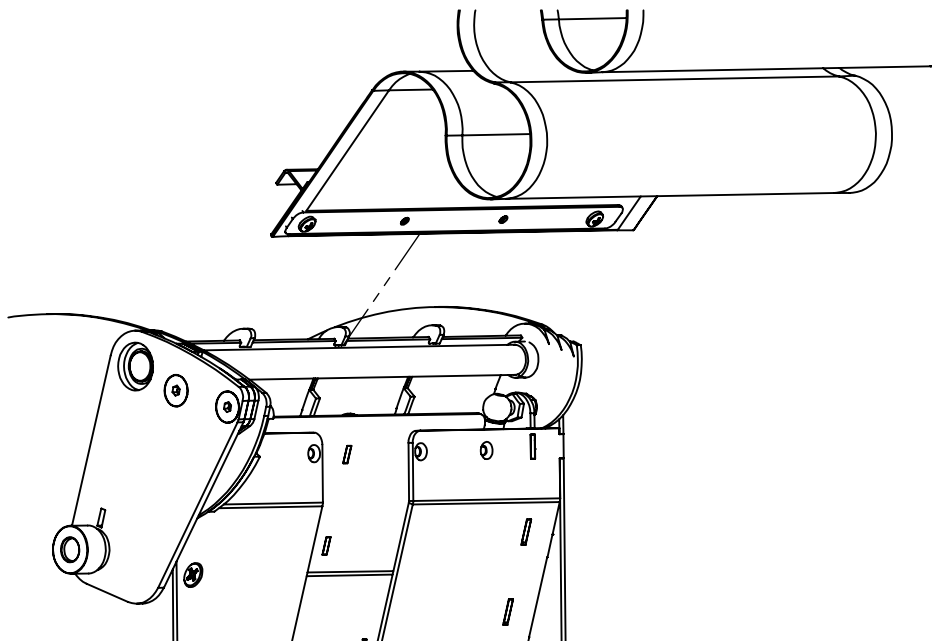
Revision Table			
REV.	DESCRIPTION	DATE	INT
A	WFE10N100/Z was B8391-1	5/15/2024	BD
B	Changed mounting bracket to fit over gate pivot shaft, Screws changed too	9/20/2024	BD
C	Added Ejector Wheel Mount and Hardware	10/4/2024	BD

HAMILTON
BY **GUNNEBO**

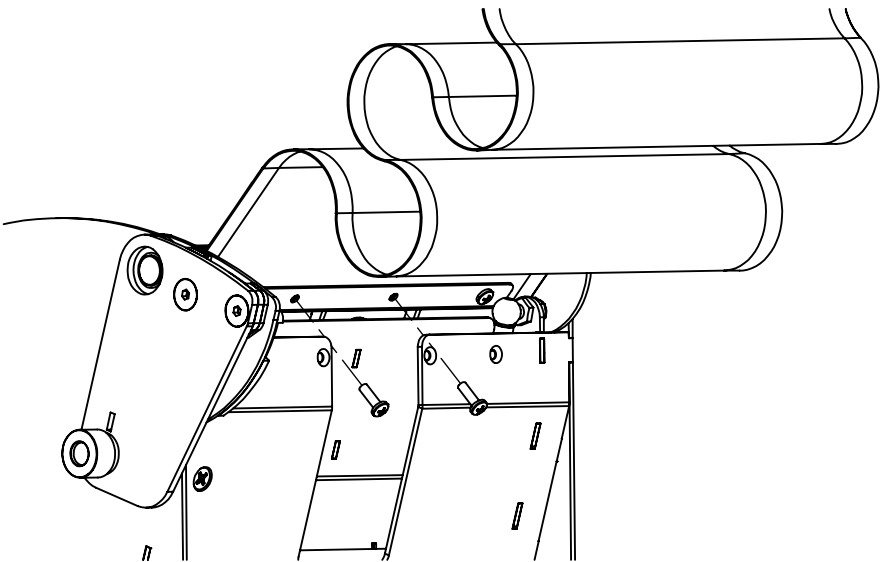
PROPRIETARY AND CONFIDENTIAL
THESE DRAWINGS ARE THE PROPERTY
OF HAMILTON SAFE CO. AND SHALL
NOT BE REPRODUCED, COPIED, USED
AS THE BASIS FOR MANUFACTURE OR
SALE OF APPARATUS WITHOUT
PERMISSION

TITLE			
29" Long Extended Flex Chute Kit			
PART NUMBER			
OAK-FLEX-29			
DRAWN BY	DATE	CHECKED BY	REVISION
BiDet	3/7/2024		C

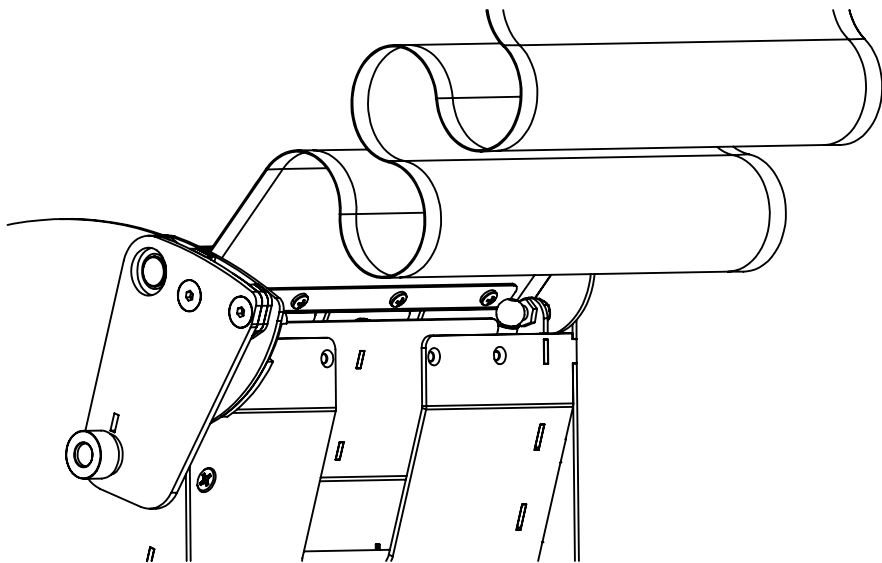
Step #1 With two center screws loosened or removed, insert flex chute mounting bracket (ND21-208) over gate pivot shaft as shown.



Step #2 Apply thread locker to two 10-32 x 5/8 screws. Tighten screws securing bracket to gate pivot shaft and flex chute to bracket.



Step #3 Test operation of hopper with flex chute installed.



HAMILTON BY GUNNEBO	PROPRIETARY AND CONFIDENTIAL THESE DRAWINGS ARE THE PROPERTY OF HAMILTON SAFE CO. AND SHALL NOT BE REPRODUCED, COPIED, USED AS THE BASIS FOR MANUFACTURE OR SALE OF APPARATUS WITHOUT PERMISSION			
	TITLE 29" Long Extended Flex Chute Kit			
	PART NUMBER OAK-FLEX-29			
	DRAWN BY BilDet	DATE 3/7/2024	CHECKED BY	REVISION