

# HAMILTON

BY **GUNNEBO**®

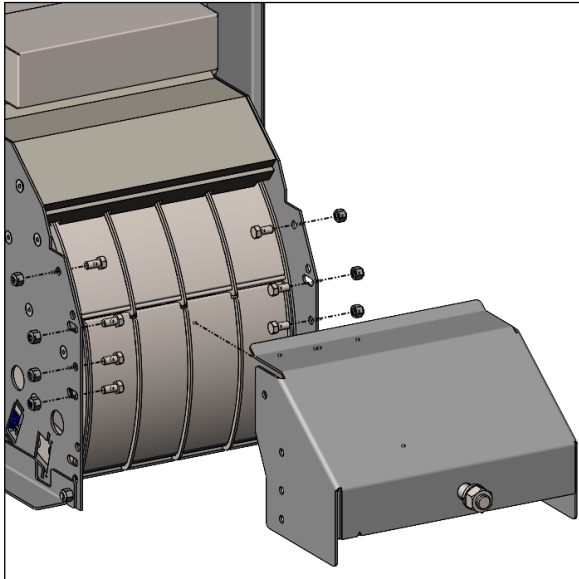
## Oakley Flex Chute Kit #OAK-FLEX-29

**Installation Instructions:** (Works with models OAK80, OAK98, and OAK20)

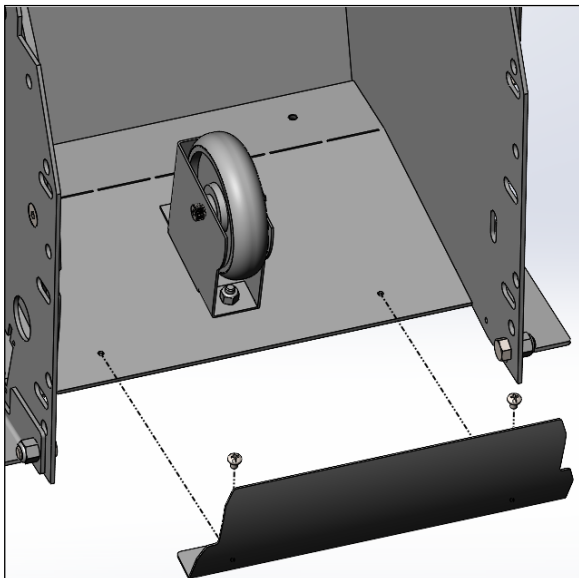
### Kit includes:

- 1 – OAK-FLEX-29 (Rev B) Flex chute kit with new bracket
- 1 – ND21-050 Ejector wheel mounting bracket
- 1 – 1/4-20 x 5/8 hex head bolt
- 1 – 1/4-20 nylon insert lock nut

- 1) Remove rear anchor plate assembly (OAK80 ONLY).



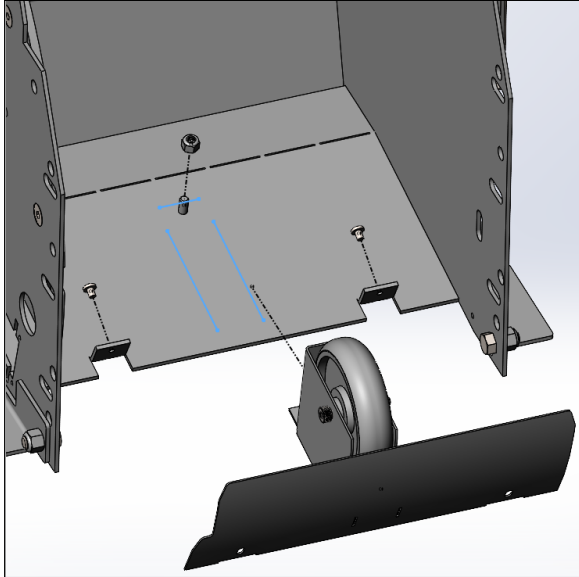
- 2) Open hopper.
- 3) If your deflector plate is separate from the ejector wheel mount, continue to step #4. If your deflector plate is connected (welded) to the ejector wheel mount, continue to step #5.
- 4) If the deflector plate is separate from the ejector wheel mount, ONLY remove the deflector plate by removing two 10-32 x 1/4 Phillips screws. SKIP steps #5 – 13 and continue to step #14.



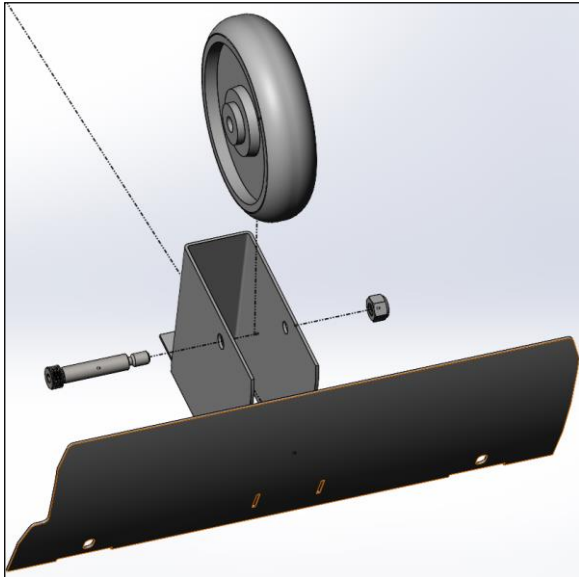
# HAMILTON

BY **GUNNEBO**®

- 5) If deflector plate is welded to the ejector wheel mount, mark the location of the ejector wheel mount by drawing lines on the bottom plate all around the edges of the ejector wheel mount. Remove deflector plate/ ejector wheel assembly by removing two 10-32 x 1/4 Phillips screws and one 1/4-20 nylon locknut.



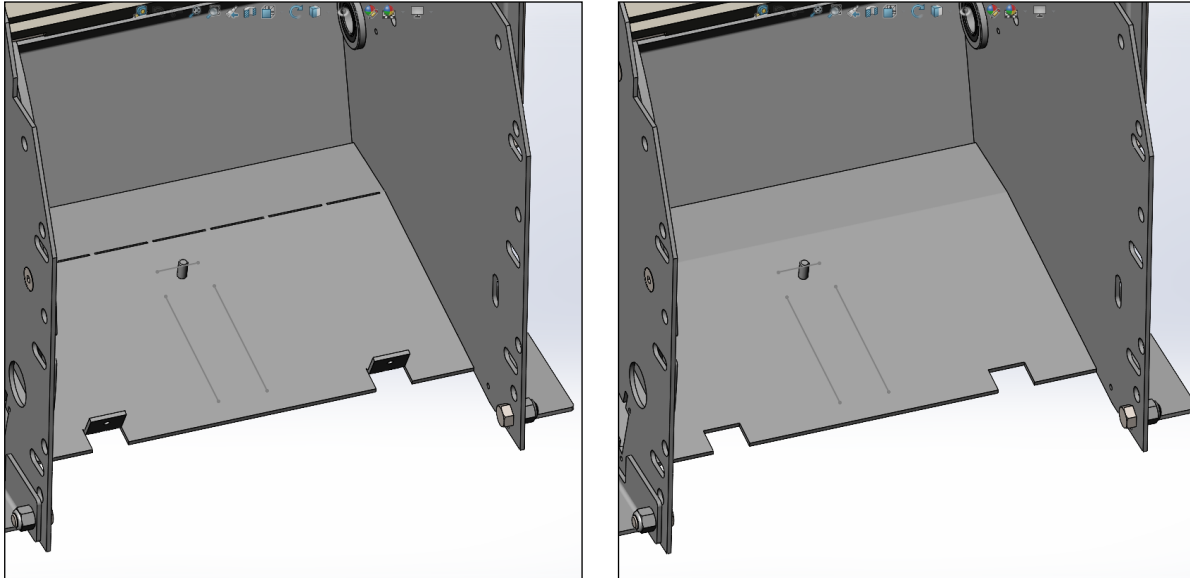
- 6) Remove ejector wheel from deflector plate/ ejector wheel assembly.



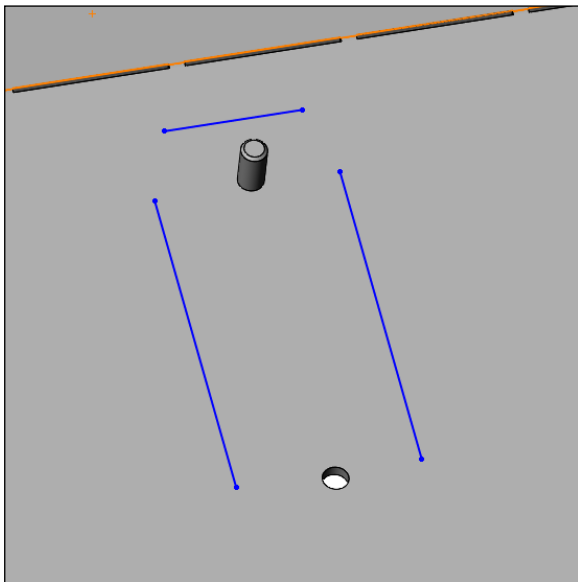
# HAMILTON

BY **GUNNEBO**®

- 7) Bend down deflector plate mounting tabs located on bottom plate of frame. Bend up and down to break them off. Remove any sharp edges and all burrs so not to catch or hang on the flex chute cloth.



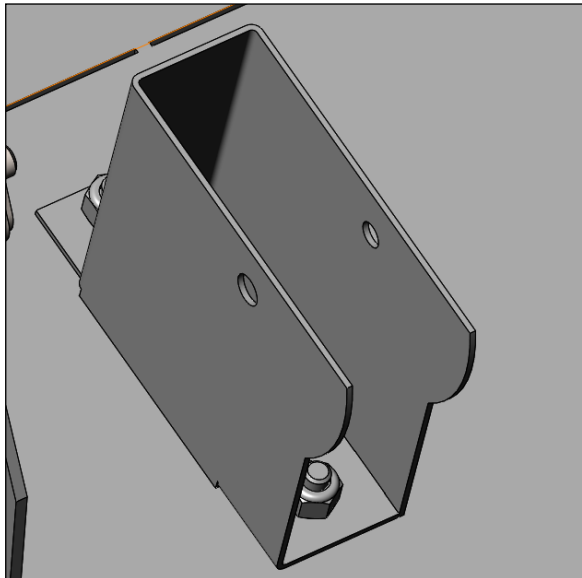
- 8) Making sure bracket is aligned with your marks from old ejector wheel mount, temporarily mount new ejector wheel mount bracket (ND21-050) using one 1/4-20 lock nut in front mounting location.
- 9) Making sure bracket is aligned with your marks from old ejector wheel mount, mark location for rear bolt on bottom plate of frame.
- 10) Remove bracket and drill 1/4" hole as marked on bottom plate of frame.



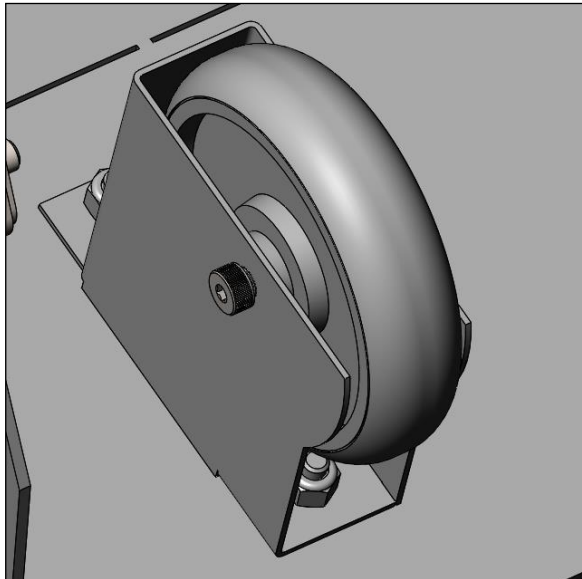
# HAMILTON

BY **GUNNEBO**®

- 11) Mount ejector wheel mount bracket (ND21-050) using one 1/4-20 lock nut, and one 1/4-20 x 5/8 bolt and nylon insert lock nut.



- 12) Install ejector wheel, removed in step 36, in new bracket.

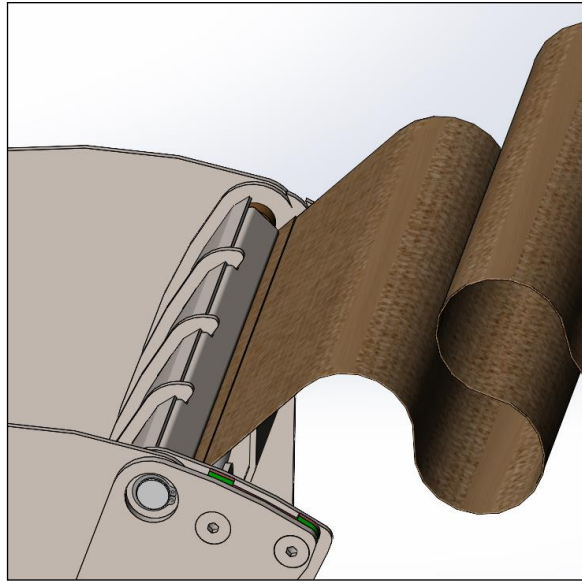
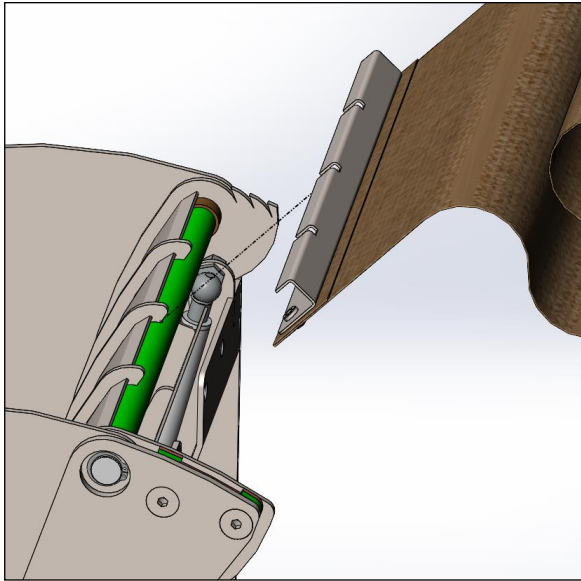


# HAMILTON

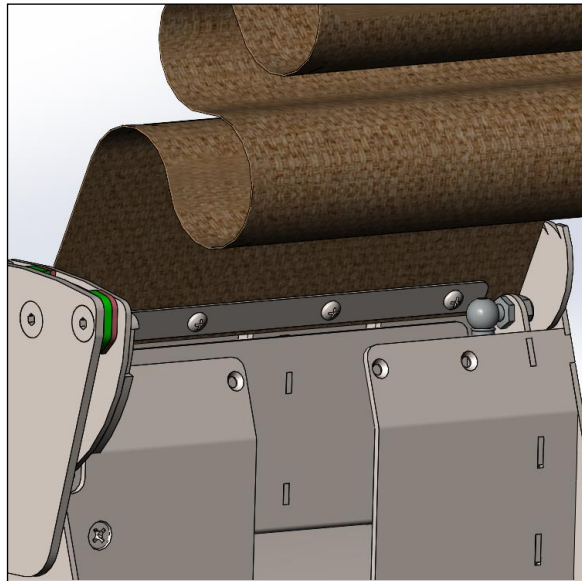
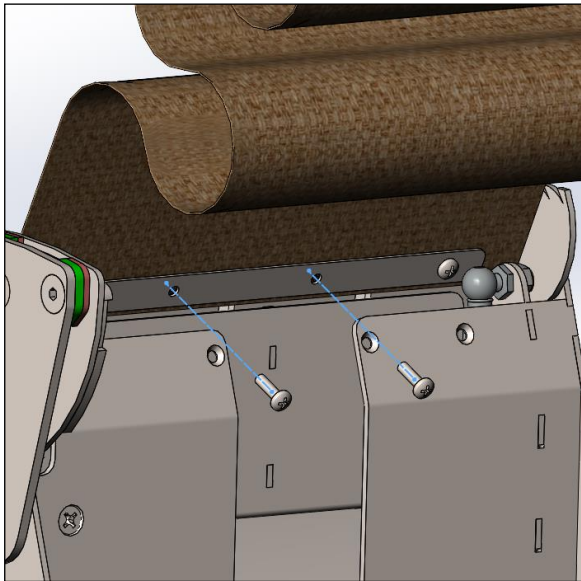
BY **GUNNEBO**®

13) Adjust bracket location so that hopper gate fully ejects deposits.

14) Snap new flex chute mounting bracket onto 5/8" gate pivot shaft. (See also instructions on the drawing for OAK-FLEX-29).



15) Install two 10-32 x 5/8 screws in center two holes with thread locker.

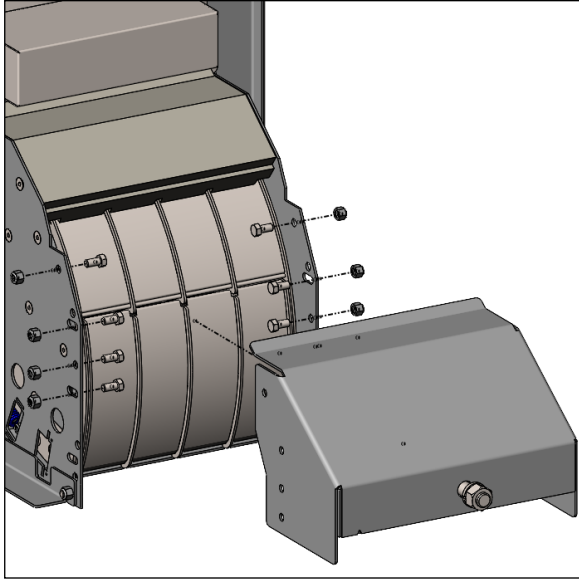


# HAMILTON

BY **GUNNEBO**®

16) Check operation making sure flex chute does not hang, snag, or catch anything through full operation of hopper.

17) Reinstall rear anchor plate assembly (OAK80 ONLY).



18) Check operation again to confirm everything works as it should before reinstalling unit.