

HAMILTON

7775 Cooper Road • Cincinnati, Ohio 45242 • 513-874-3733

Under Counter Cabinet and Locker Door Swing Change Instructions



1: Safety Details

NOTE: All caution statements in this document MUST be observed by the operator to reduce the risk of personal injury, and damage to the equipment.



- Read and understand these instructions fully before operating this equipment.
- Keep hands, fingers, hair, and loose clothing away from openings and moving parts during service and operation.
- Do NOT modify this equipment in any way other than expressed in this or other manuals for this equipment.
- Qualified personnel must perform installation and service for this equipment.

2: Unit Details

These instructions will cover changing the door swing for all models of Hamilton under counter steel. This includes both cabinet style doors and locker style doors. Some changes may be required to the lock installation that will not be covered in this manual, please refer to the instructions for the model lock used.

The description “Cabinet style door” refers to hollow steel doors of a thinner gauge typically with a single cam or pin tumbler lock.

The description “Locker style door” refers to thicker solid steel doors. Typically, these doors are about 1/2" thick solid steel and can be very heavy. Use caution when removing the hinges by having something to support the door after the hinges are disconnected. Locker doors have a 3-point bolt work and typically use a combination or similar lock.

The process of changing the door swing is similar with both styles of doors?

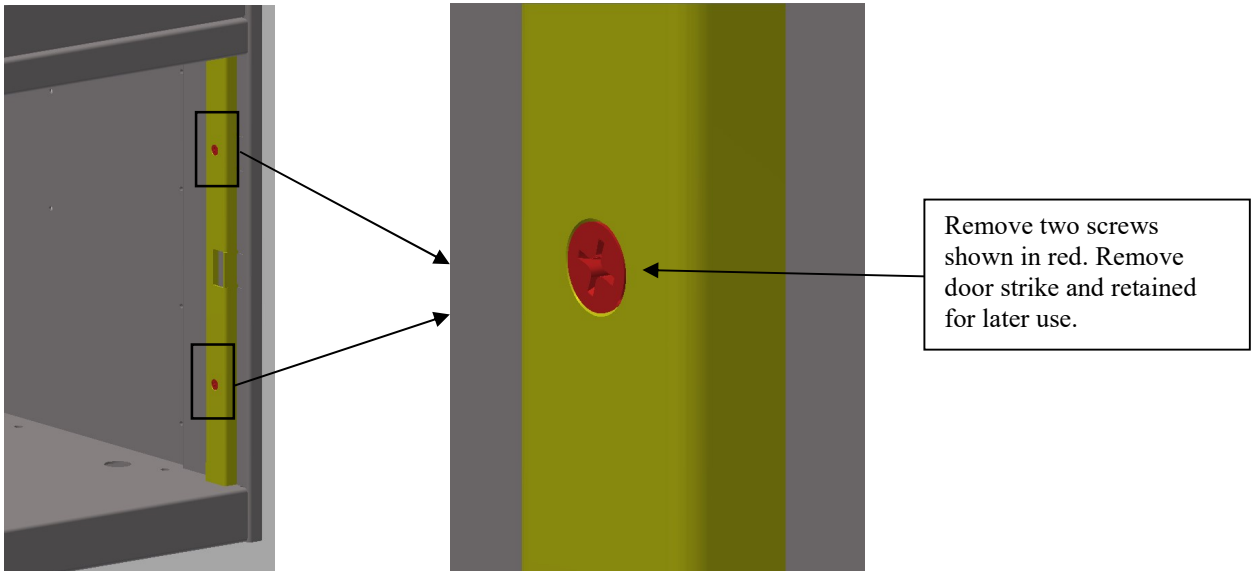
2.1: Tools Required

These procedures will require basic hand tools. Hex key wrenches may be required on some models.

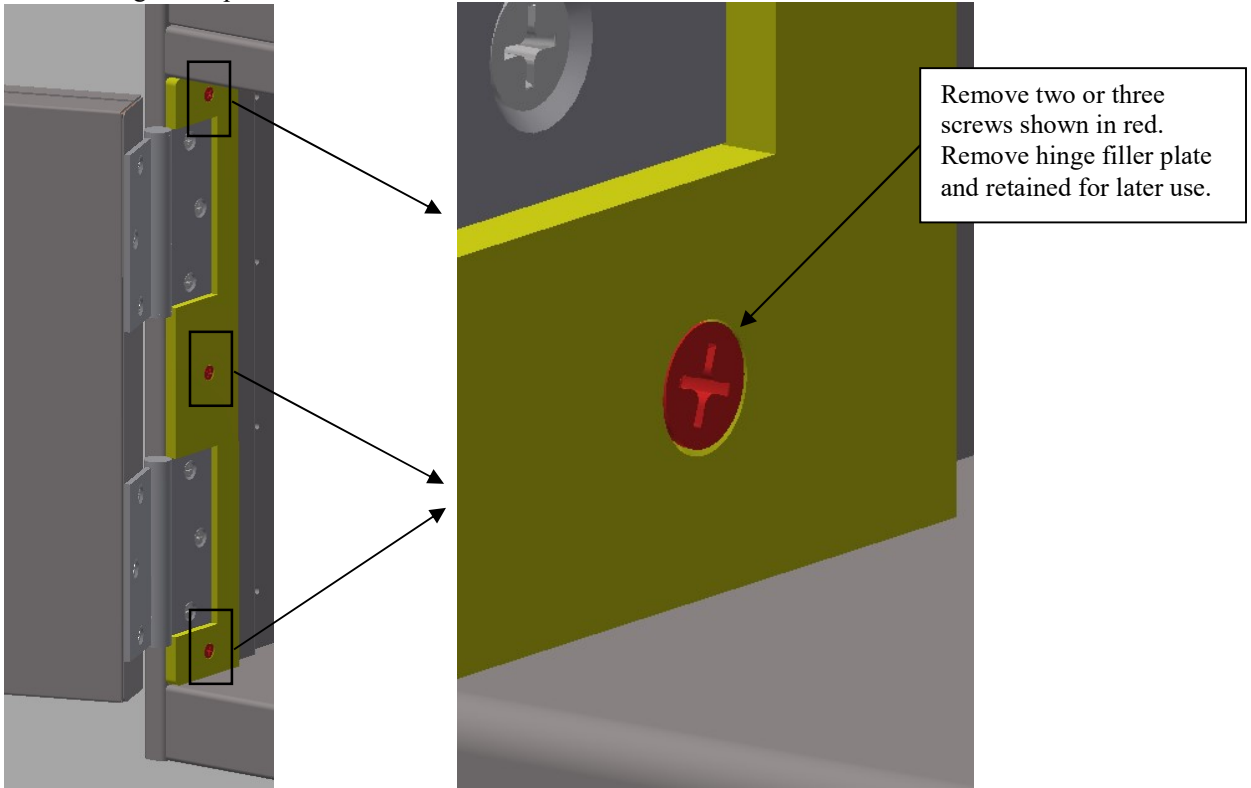
3: Changing Door Swing Details:

Basic Instructions:

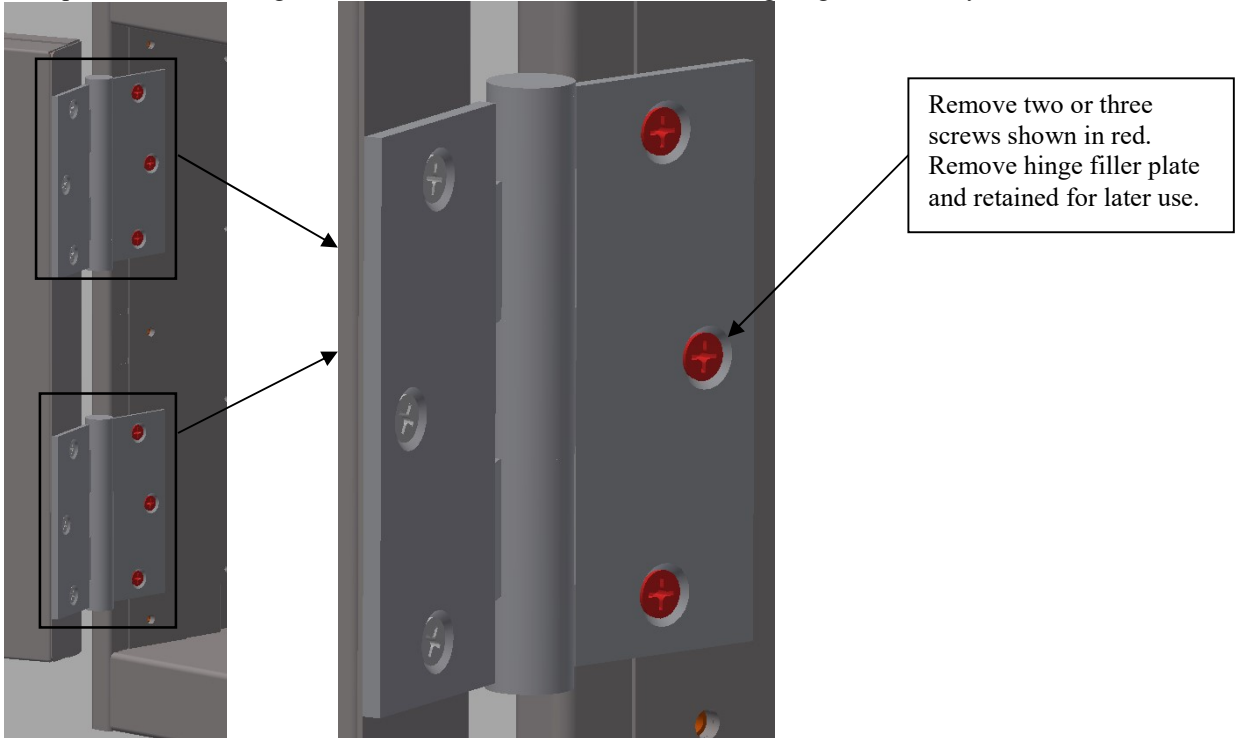
- 1) Doors must be unlocked
- 2) Remove door strike.



- 3) Remove hinge filler plate.



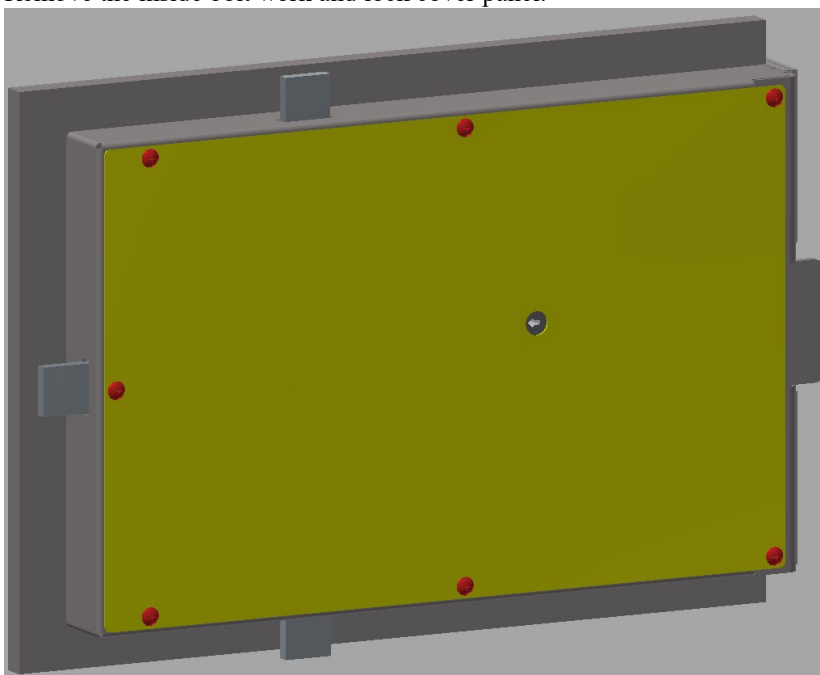
- 4) Remove door hinges from the body. Support door weight before removing hinge screws. Cabinet style units have a shim plate behind the hinges. Retain this shim and use when remounting hinges. Locker style units do not have shim.



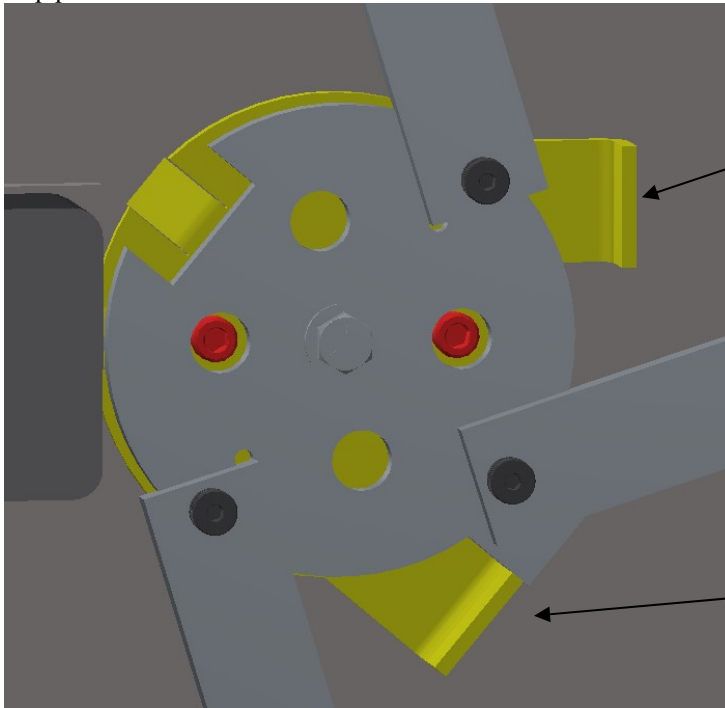
- 5) Flip door over and reinstall hinges on opposite side of cabinet. Reinstall hinge shim plate on cabinet style units. Locker style units do not have a hinge shim plate.
- 6) Reinstall hinge filler plate around hinges as removed in step #3.
- 7) Reinstall door strike on opposite side as removed in step #2.

** If you have the cabinet door model, you have completed the door swing conversion. Locker style models require additional changes to the bolt work and possibly the lock assembly.

- 8) Remove the inside bolt work and lock cover panel.



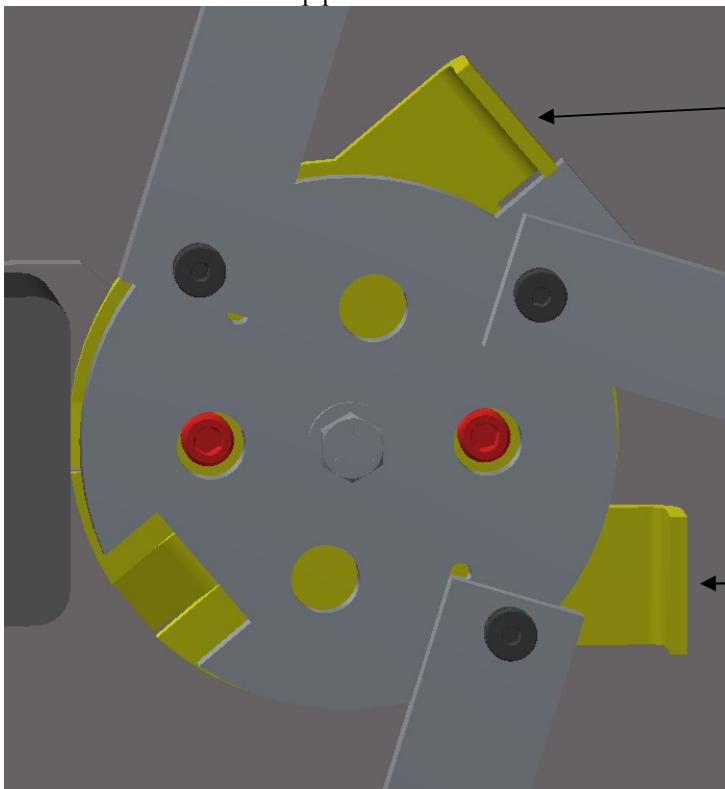
- 9) The cam stop plate should be mounted so the upper stop is pointed upwards and the lower stop is pointed straight towards strike side of the door. With the bolt work in the unlocked position, remove the two screws holding the cam stop plate.



This is the wrong position. The upper stop should point upwards.

This is the wrong position. The lower stop should point straight towards the strike side.

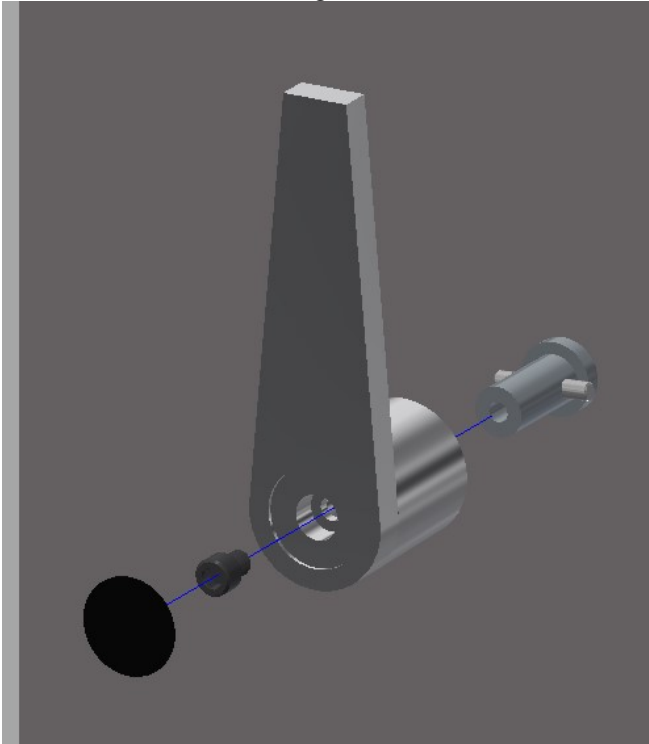
- 10) Pull outward on the cam stop plate and rotate it so that the D



This is the correct position. The upper stop should point upwards as shown.

This is the correct position. The lower stop should point straight towards the strike side.

- 11) Pry out and remove the black handle insert to expose center mounting screw. Do not damage the insert so you can reuse. Remove the center screw and slide handle off the arbor. Caution, do not remove or lose the cross pin. Rotate the handle 180 degrees and reinstall onto arbor so the handle is pointed downward. Reinstall the center screw to secure handle. Use small amount of glue to reinstall handle insert.



- 12) Follow lock instructions to mount lock, dials, and all lock hardware in the correct position for the new swing of the locker door.
- 13) Test lock, handle, and bolt work operation before closing the locker door.
- 14) Reinstall rear cover panel as removed in step #8.

