

SurroundVideo® G5 IP Megapixel Dome Cameras

5–20MP H.264 All-in-One 180° Panoramic Motorized P-iris Lens True Day/Night Indoor/Outdoor Dome IP Cameras with WDR (Wide Dynamic Range) and STELLAR™ (Spatio Temporal Low Light Architecture) Models



GEN5



Stitched image from an 8MP SurroundVideo 180° camera in a healthcare services environment

180° Panoramic Coverage with Exceptional Resolution – SurroundVideo G5

The SurroundVideo G5 multi-sensor, multi-megapixel dome camera pushes the boundaries of next generation technology, providing users with four (4) integrated, Remote Focus P-iris lenses for an incredible 180° panoramic experience in a single indoor/outdoor housing. SurroundVideo G5 cameras provide an all-in-one solution for capturing wide area video surveillance while maximizing the field-of-view and reducing the total number of cameras required.

The SurroundVideo G5 multi-megapixel camera series delivers 5-, 12-, or 20-megapixel resolutions. For added flexibility, users can view the camera's four (4) sensors individually or as a smooth transition of all images blended together for a full 180° panoramic view. The camera is factory aligned with a slight image overlap to ensure you never miss a thing. For an optimal image, each sensor can be individually adjusted for the best exposure ratio per sensor (AV12586PM WDR model).

The series combines a day/night mechanical IR cut filter for the highest image quality at any time of day. The SurroundVideo G5 camera features

four (4) factory-installed Remote Focus P-iris lenses, ensuring the best possible depth of field and image clarity for precise performance from each individual sensor. Once mounted, the operator can quickly focus the camera remotely, eliminating the need to adjust the camera on-site. No more hassle individually installing multiple cameras to cover a wide area, manually focusing lenses, or risk missing critical information from a 180° scene.

For challenging low-light applications, the 5MP STELLAR, "Spatio Temporal Low Light Architecture" model offers best-in-class light sensitivity capturing details in extreme low-light. The 12MP SurroundVideo G5 camera (AV12586PM) features Wide Dynamic Range (WDR) to produce clear images in harsh lighting conditions.

SurroundVideo G5 is designed for demanding environments. Subjected and certified to rigorous dust and water tests, the IP66 rating, and its extended operating temperature range make it ideal for outdoor applications. The IK-10 rated, rugged dome housing is perfect for deterring vandals since it can withstand the equivalent of 55 kg (120 lbs) of force.



180° Panoramic



True Day/Night
with IR Cut Filter



Dual Encoder
H.264/MJPEG



Integrated
Motorized Lenses
with Remote Focus



P-Iris Control for
Best Depth of Field
and Image Clarity



STELLAR™
Low Light Technology
on 5MP Models



Wide Dynamic Range
on 12MP Models



Pixel Binning Mode
on 12 and 20MP
Models



Impact / Weather
Resistant IK-10
and IP66 Rated



Camera Zone 1*

Camera Zone 2*

Features and Benefits

Features	Benefits
Ultra High Resolution 5-20MP Models	Covers a large area for identifying objects at a great distance. Offers the level of detail perfect for a detailed and effective retrospective analysis.
True Day/Night	Delivers color images during the day and automatically switches to monochrome mode when the illumination level drops.
Motorized Remote Focus	Makes installation easier so the installer can accurately focus the camera remotely.
P-iris Control	Optimizes the image for the best video clarity under different lighting conditions.
STELLAR™ Technology*	STELLAR Low Light Technology reduces motion blur, noise and storage requirements. The technology enhances contrast and produces color imaging in near complete darkness on 5MP models.
True Wide Dynamic Range*	Captures all the important details in a scene with both bright and dark areas.
Pixel Binning*	Provides increased sensitivity for strong low light performance.
Privacy Masking	Protects areas for maintaining sensitive information.
Multi-Streaming	Provides eight non-identical streams for efficient viewing, recording, and integrating third-party video management systems.

* Select models

Motorized Lenses with Remote Focus

Each SurroundVideo G5 camera features four integrated P-iris motorized lenses. This ensures the best possible depth of field and image clarity for precise performance from each individual sensor. Once mounted, the operator can quickly focus the camera remotely, eliminating the need to adjust the camera while on a ladder.



The simplicity of clicking "Short-range Focus" or "Full-range Focus" saves both time for installers and money for end users.

Outdoor-Ready, Vandal Resistant Housing

Install the SurroundVideo G5 camera with confidence both indoors and outdoors. Big and tough, the SurroundVideo G5 camera is IP66 environmentally-rated and IK-10 impact-resistant. The camera can withstand dust and water ingress as well as forceful blows and still stay on duty protecting your environment with detailed megapixel images.



A Rich History of Innovation

 <p>World's First 180° and 360° Panoramic 8MP Network IP Cameras.</p> <p>2006</p>	 <p>World's First H.264 180° and 360° Panoramic 8MP Network IP Cameras.</p> <p>2008</p>	 <p>SurroundVideo True Day/Night 8MP H.264 Panoramic 180° and 360° IP Cameras.</p> <p>2010</p>	 <p>SurroundVideo True Day/Night 20MP H.264 Panoramic 180° and 360° IP Cameras.</p> <p>2011</p>	 <p>SurroundVideo WDR 12MP H.264 180° Panoramic IP Camera with True Wide Dynamic Range</p> <p>2012</p>
--	--	---	--	---



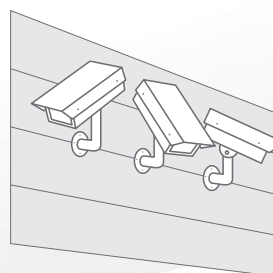
Camera Zone 3*

Camera Zone 4*

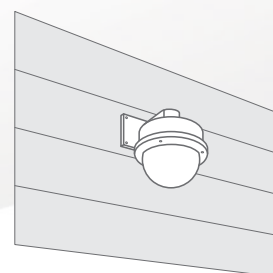
NOTE: Confirm with your Video Management System / Network Video Recorder Manufacturer regarding how these four sensor cameras will appear in their systems.
* Slight image overlap so you never miss any details.

Higher Resolution x 4 Sensors = Greater ROI

Arecont Vision® IP megapixel technology delivers superior image quality and reduces overall system cost by covering large areas with fewer cameras with outstanding clarity. An area typically requiring multiple pan-tilt-zoom (PTZ) or fixed cameras can be covered with a single SurroundVideo series camera. SurroundVideo panoramic multi-sensor cameras easily capture moving objects throughout the day and night, delivering comprehensive coverage and forensic detail all without the need of an operator.



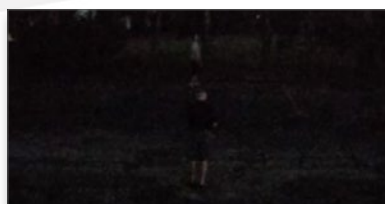
Their Solution



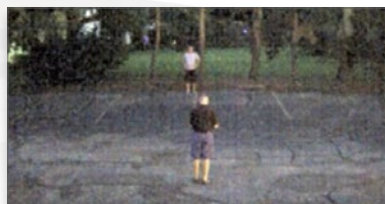
Our Solution

STELLAR™ Low Light Technology

Advanced Low-Light Technology for Noise Reduction and Enhanced Color Imaging in Near Complete Darkness. STELLAR technology is "Spatio Temporal Low Light Architecture" which allows for color imaging in near complete darkness. Arecont Vision STELLAR technology utilizes a patented algorithm that reduces noise, motion blur, bit rate, and storage requirements. STELLAR has superior low light sensitivity, making it capable of covering areas where very little light is present.



Color image without STELLAR at 0.02 Lux



Color image with STELLAR at 0.02 Lux

MegaDynamic® Wide Dynamic Range (WDR)

In extreme lighting conditions, it can be challenging to capture the best of the brightest and darkest parts of a scene. The 12MP SurroundVideo cameras feature Wide Dynamic Range (WDR) technology to produce clear images in harsh lighting conditions. The Arecont Vision WDR technology generates two images. One is a long exposure for the darkest areas of the scene, and the other a short exposure for the brightest areas. The camera then combines the images to produce a perfect exposure, revealing details previously unseen.



40MP

SurroundVideo 40MP 180° Panoramic and SurroundVideo WDR 12MP 360° Panoramic



SurroundVideo Omni – World's First Multi-Sensor Omni-Directional User-Configurable IP Megapixel Camera



SurroundVideo G5 – World's First 5MP, 12MP, and 20MP 180° Panoramic with Remote Focus and STELLAR

2013

2014

2015



Leading the Way in Megapixel Video™

Model Comparison

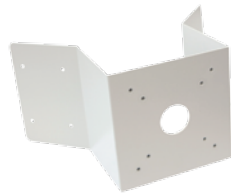
Model	Resolution		Minimum Illumination	Max Frame Rate @ Full Resolution	H.264/MJPEG	True Day/Night	P-Iris Lens Compatible	STELLAR™	True WDR	Binning Mode
AV5585PM	5MP = 1.2MP x 4	5120 x 960	Color: 0.02 Lux B/W: 0.002 Lux, IR Sensitive	12fps	•	•	•	•		
AV12585PM*	12MP = 3MP x 4	8192 x 1536	Color: 0.2 Lux B/W: 0.02 Lux, IR Sensitive	10fps	•	•	•			•
AV12586PM*	12MP = 3MP x 4	8192 x 1536	Color: 0.2 Lux B/W: 0.02 Lux, IR Sensitive	10fps	•	•	•		•	•
AV20585PM*	20MP = 5MP x 4	10240 x 1920	Color: 0.3 Lux B/W: 0.02 Lux, IR Sensitive	7fps	•	•	•			•

Configuration

Accessories (Sold Separately)



180° Panoramic



AV-CRMA
Corner Mount Adapter



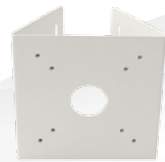
AV-EBA
Electrical Box Adapter



AV-JBA
Junction Box Adapter
(Fit 3/4" NPT Conduit)



AV-PMJB
Pendant Mount Bracket with
Junction Box (Fit 1.5" NPT)



AV-PMA
Pole Mount Adapter



AV-WMJB
Wall Mount Bracket with
Junction Box (Fit 1.5" NPT)



SV-CAP
Wall Mount Cap
Only with 1.5" NPT



SV-FMA
Flush Mount Adapter



Global Sales and Support

Arecont Vision is the leading manufacturer of high-performance megapixel IP cameras and associated software.

Americas

Los Angeles, CA, USA
Arecont Vision, LLC. Headquarters
425 E. Colorado St., 7th Floor
Glendale, CA 91205, USA

Phone: +1.818.937.0700
Toll Free: 877.CAMERA.8
Fax: +1.818.937.0464

Sales
Phone: +1.818.937.0700 x 3
Email: avsales@arecontvision.com

Support
Phone: +1.818.937.0700 x 1
Email: support@arecontvision.com

Latin America
Email: latam.sales@arecontvision.com

EMEA

Düsseldorf, Germany
Phone: +49.69.6953.4600
Email: europe.sales@arecontvision.com

Moscow, Russia
CJSC Arecont Vision
Phone: +7.495.649.0577
Fax: +7.495.221.5227
Email: info@arecontvision.ru

Middle East
Email: mena.sales@arecontvision.com

Africa
Email: africa.sales@arecontvision.com

APAC

China
Phone: +86.180.0179.1799
Alt. Phone: +1.818.937.0700 x 3
Fax: +1.818.649.3404
Email: apac.sales@arecontvision.com