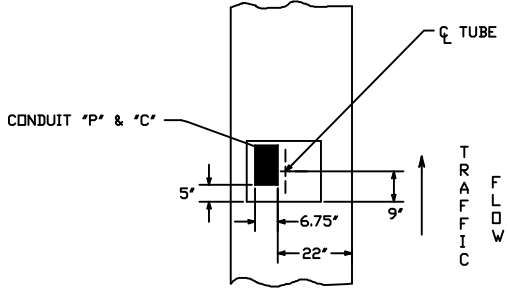
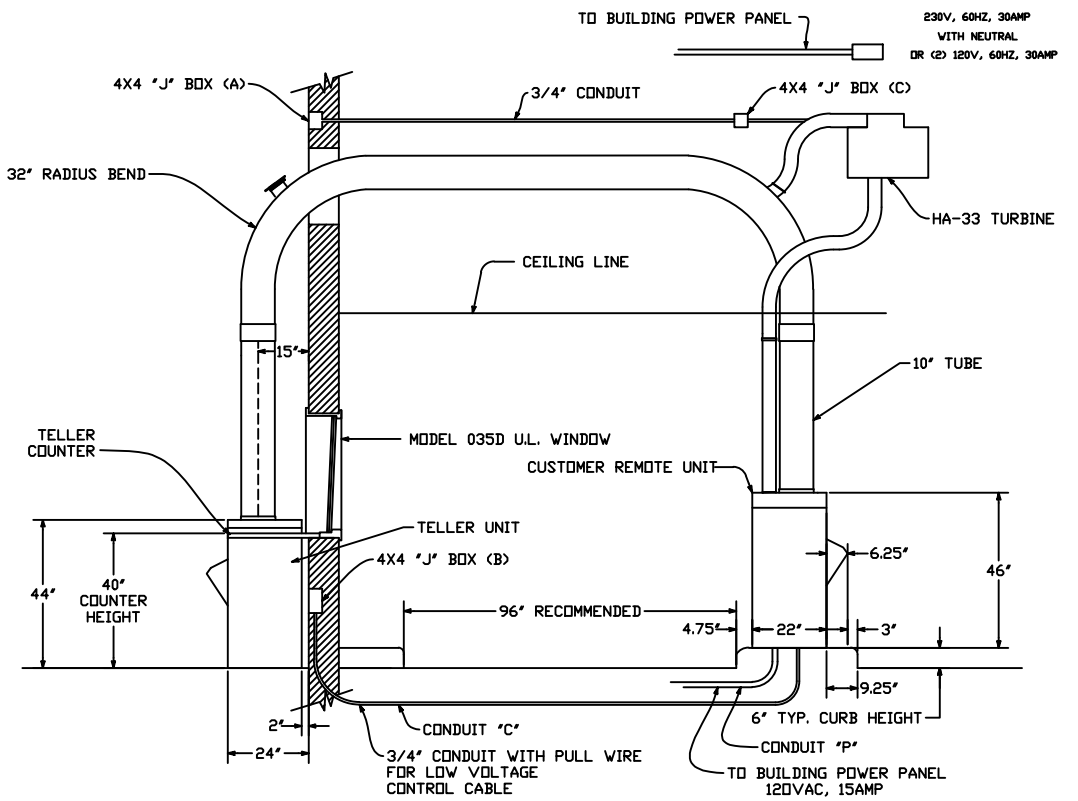


REV.-1	DATE: 6/19/00	MOVED TURBINE PLACEMENT
REV.-2	DATE: 10/4/00	ADDED NOTE
REV.-3	DATE: 5/16/11	Revised Cust. & Teller Unit Height



ISLAND DETAIL

(REFERENCE DRAWING NUMBER # 99-721)

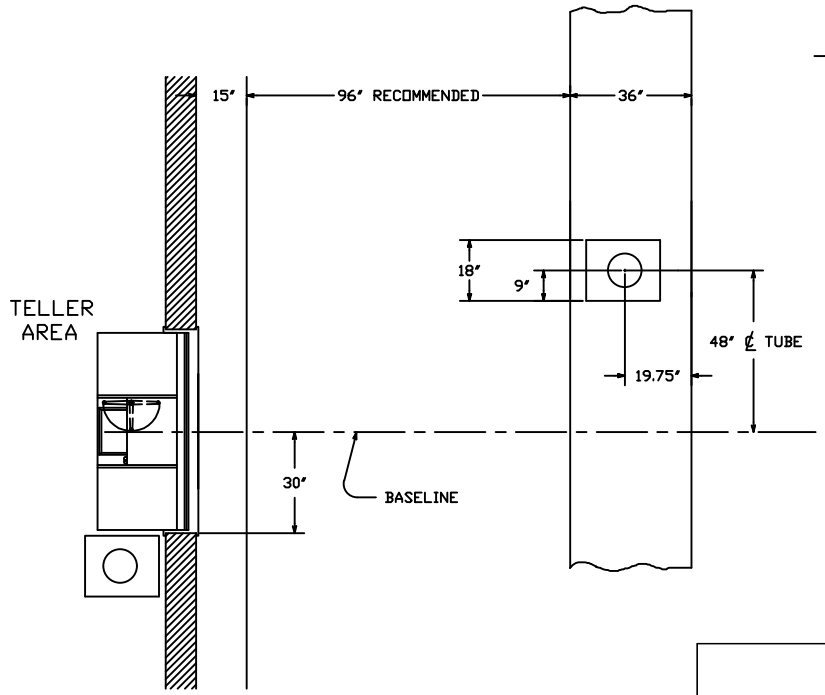


(REFERENCE DRAWING NUMBER # 99-719)

SECTION

CONDUIT REQUIREMENTS

- 1 - 3/4" WITH PULL WIRE FROM A TO C IN CANDOPY
- 1 - 3/4" TO BUILDING POWER PANEL (230V AC 30AMP)
- 1 - 3/4" FROM A TO B (TELLER STATION)
- 1 - 3/4" FROM B TO CUSTOMER UNIT (UNDERGROUND) (CONDUIT C)
- 1 - 3/4" FROM CUSTOMER UNIT TO BUILDING POWER (CONDUIT P) 120V AC 15AMP



PLAN

est. 1967 <b>HAMILTON</b> CUSTOM MADE SECURITY	PROPRIETARY AND CONFIDENTIAL THESE DRAWINGS ARE THE PROPERTY OF HAMILTON SAFE CO. AND SHALL NOT BE REPRODUCED, COPIED, USED AS THE BASIS FOR MANUFACTURE OR SALE OF APPARATUS WITHOUT PERMISSION	DESCRIPTION MODEL HA-33 111 SYSTEM - UPSEND (10" TUBE SYSTEM)	
		DRAWING/MODEL NUMBER 99-720	DATE 10/08/2021