

## Model HA-1000/HA45

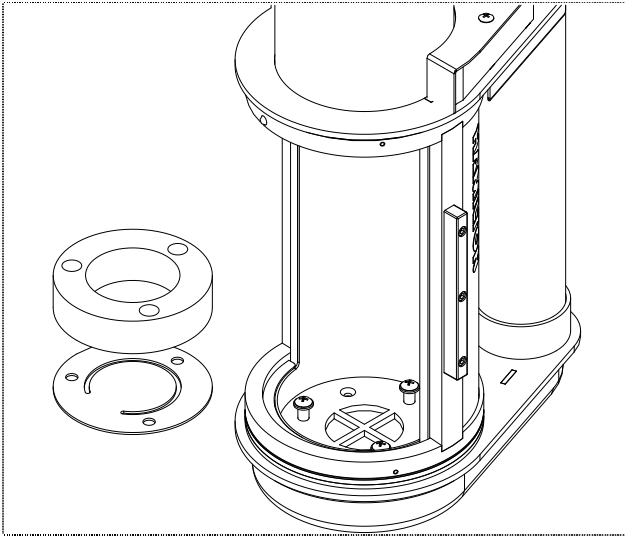
### “2004 Overhead Teller” Door Conversion Kit B6648

### Installation Instructions

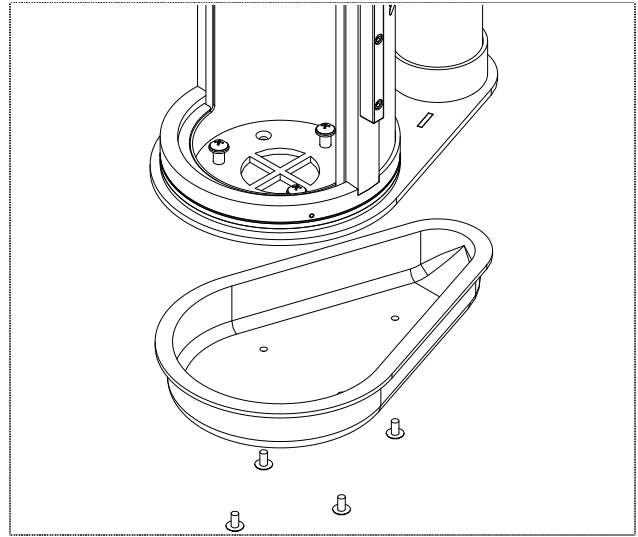
Kit B6648 is a door conversion from the 2004 version to the 2006 version. This conversion replaces the 2004 door with the 2006 version along with all of its functions and operations. The kit eliminates the door detent, vertical seals, and door bearings to make a more robust and reliable unit.

#### Parts List

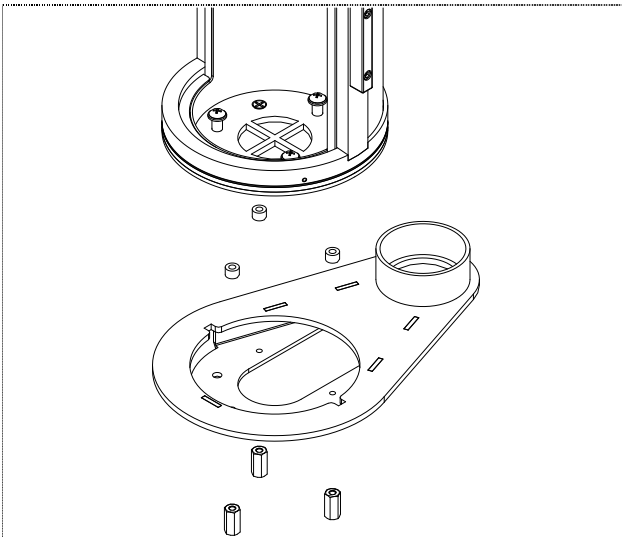
ITEM	PART NO.	DRAWING NO.	DESCRIPTION	QTY.
1	B6696	OHT-009	ROTATING DOOR ASSEMBLY	1
2	B6679	OHT-103H	.090 THINCK PORON RING	2
3	H3591	N/A	# 10-32 X 3/8" FLAT HEAD	3
4	B6681	OHT-102	O-RING TEFLON	2
5	B6685	OHT-038	BASE COVER	1
6	H0382	N/A	#6 X 1/2" FLAT HEAD SHEET METAL SCREW	7
7	E0887	N/A	MICRO SWITCH # V71B17D8-207	1
8	B6693	OHT-016	SWITCH COVER	1
9	B6687	OHT-036	SWITCH SPACER	1
10	H0789	N/A	# 4-40 X 3/4" PAN HEAD	2
11	B6683	OHT-041	DOOR HARD BUMPER	1
12	H0642	N/A	# 10-32 X 3/4" FLAT HEAD	4
13	B6843	N/A	MOUNTING PLATE, LOWER	1
14	B6839	N/A	MOUNTING RING, DOOR STOP & SWITCH	1
15	B6840	N/A	SPACER RING, UPPER	1
16	B6841	N/A	TELLER BASE, MODIFIED	1
17	B6842	N/A	SPACER RING, LOWER	1
18	H0162	N/A	FLAT WASHER #6 OVERSIZED	1
19	H0792	N/A	#6 SHEET METAL SCREW	1
20	H0392	N/A	8-32 x 3/8 TRUSS HEAD SCREW	1



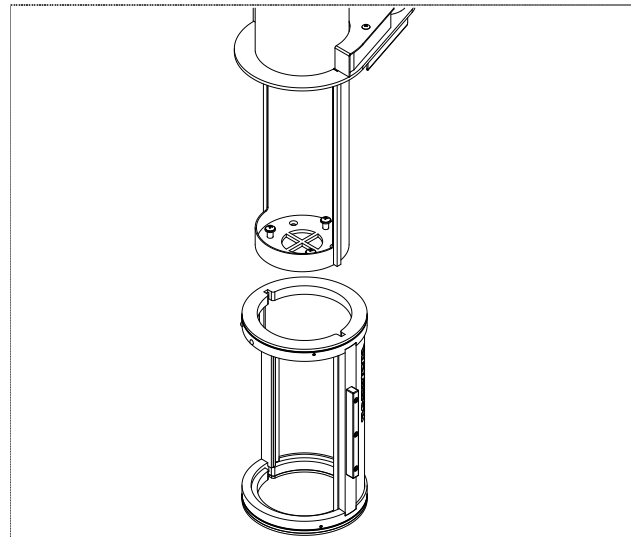
**Step#1** Remove Carrier Bumper and Check Valve Gasket



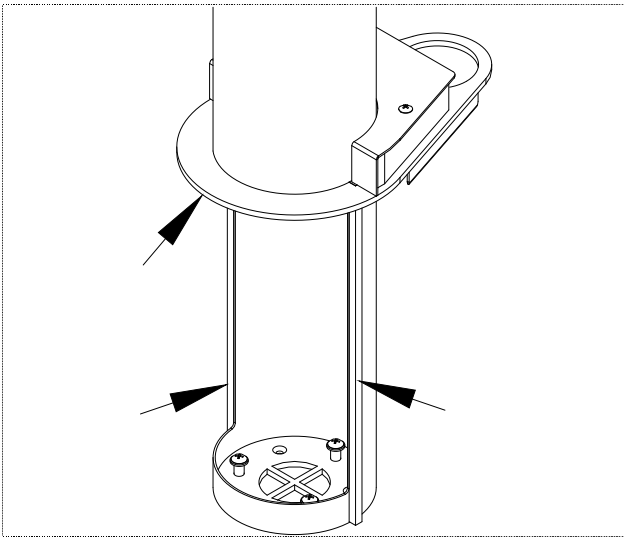
**Step#2** Remove Exhaust Chamber Cover.  
 Note: Cover is sealed with silicone from factory.  
 Only needs re-sealed if used in Point-to-Point.



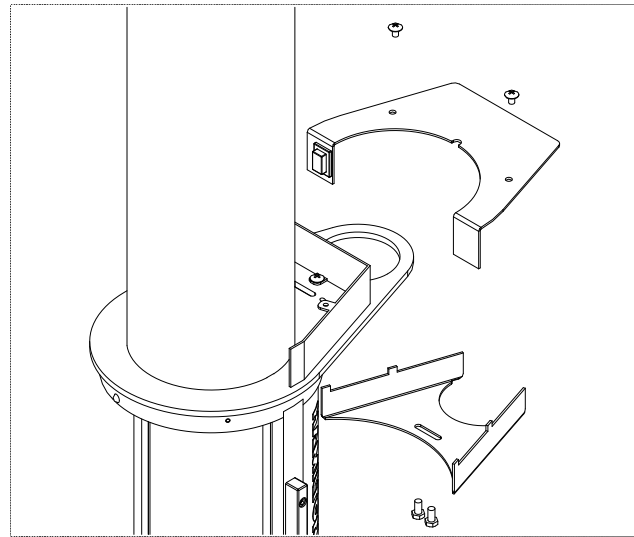
**Step#3** Remove 3 Coupler Nuts holding lower frame.  
 Remove Lower Frame and spacer nuts.  
 Note: New Spacer Nuts Supplied in Kit.



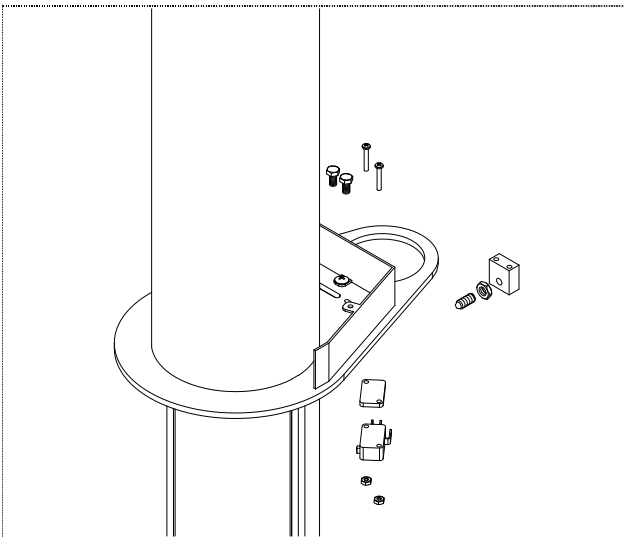
**Step#4** Remove Door Assembly including ALL rings.



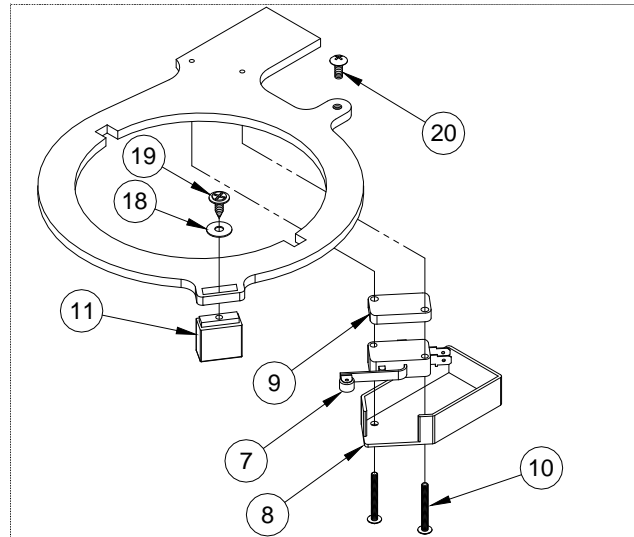
**Step#5** Remove ALL silicone and door seal material from tube frame as shown by arrows.



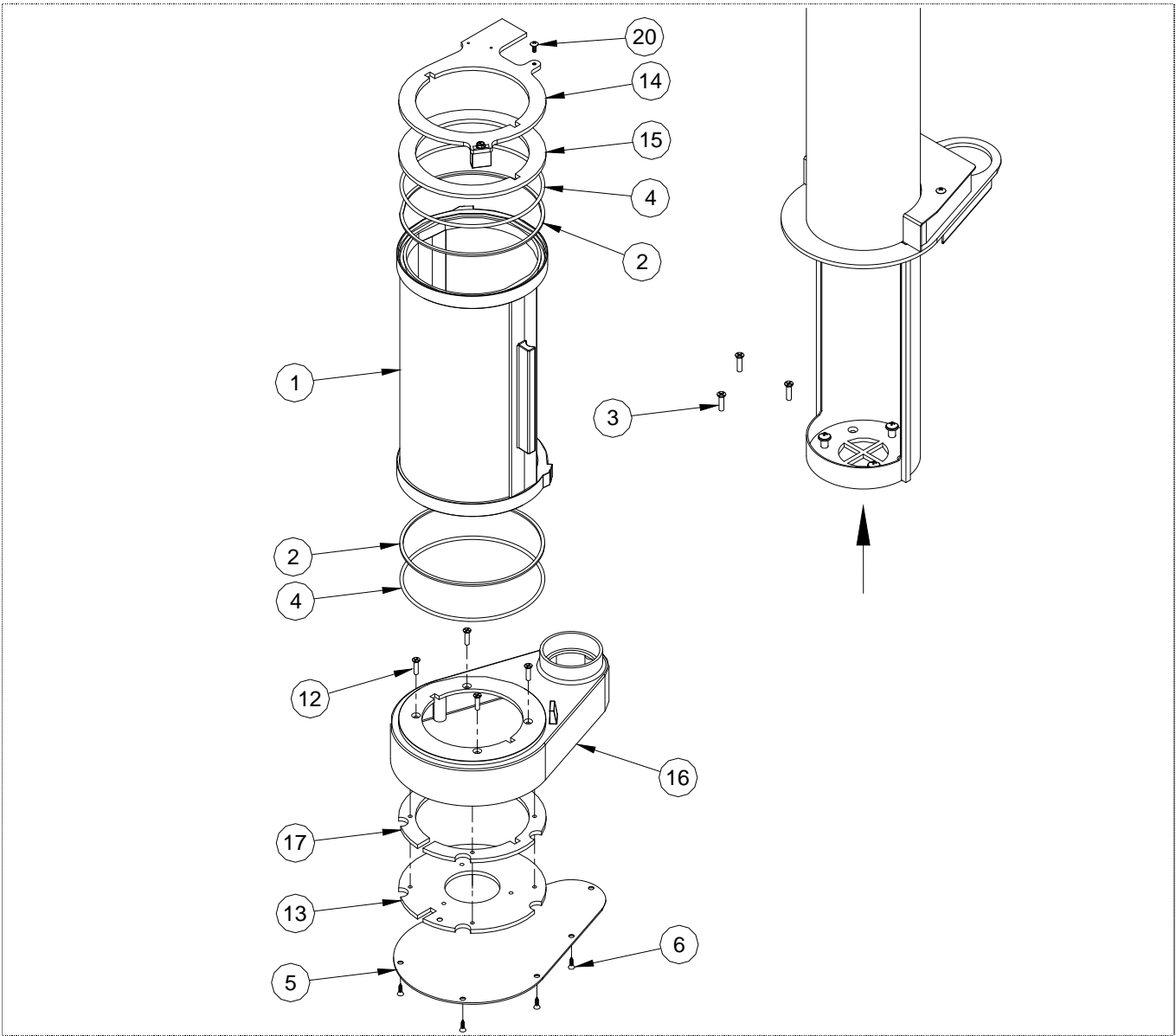
**Step#6** Remove Upper and Lower Switch covers.



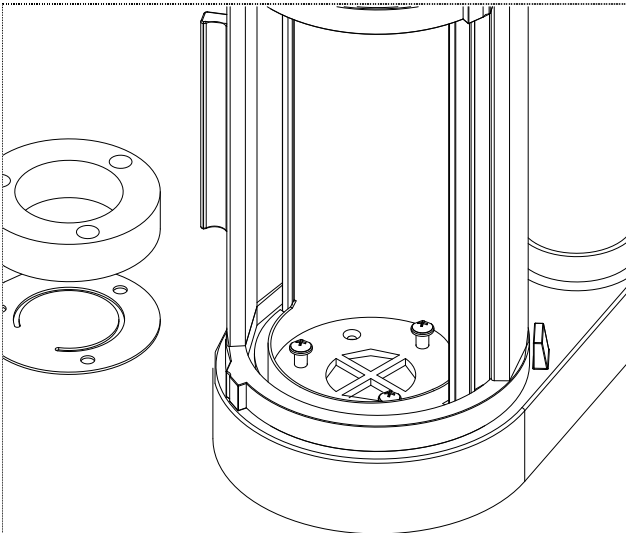
**Step#7** Remove Detent Mounting Block and Ball Nose Spring Plunger and door switch.



**Step#8** Attach door stop and switch with cover. Attach wires to door switch as removed from original.  
 White = Common  
 Red = Normally Closed  
 Black = Normally Open



**Step#9** Replace Door Assembly with ALL rings stacked and teller base with cover as shown.



**Step#10** Re-install Carrier Bumper and Check Valve Gasket.