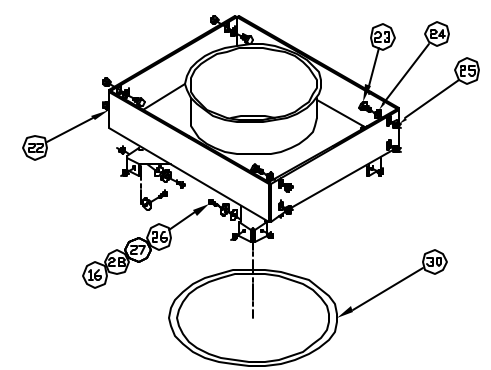
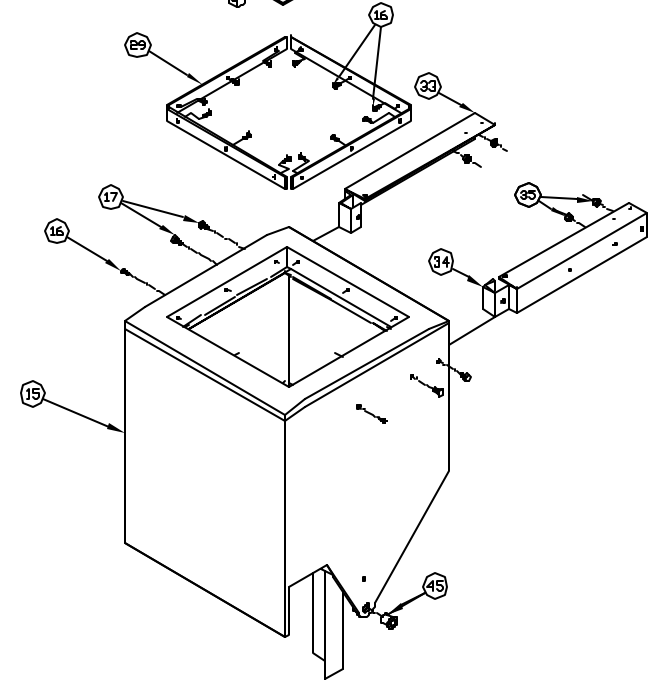
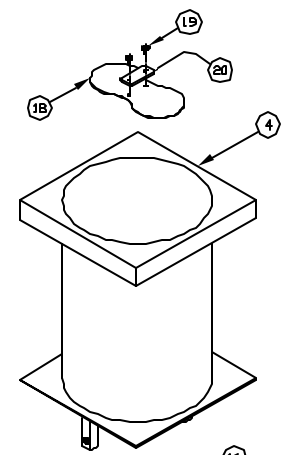
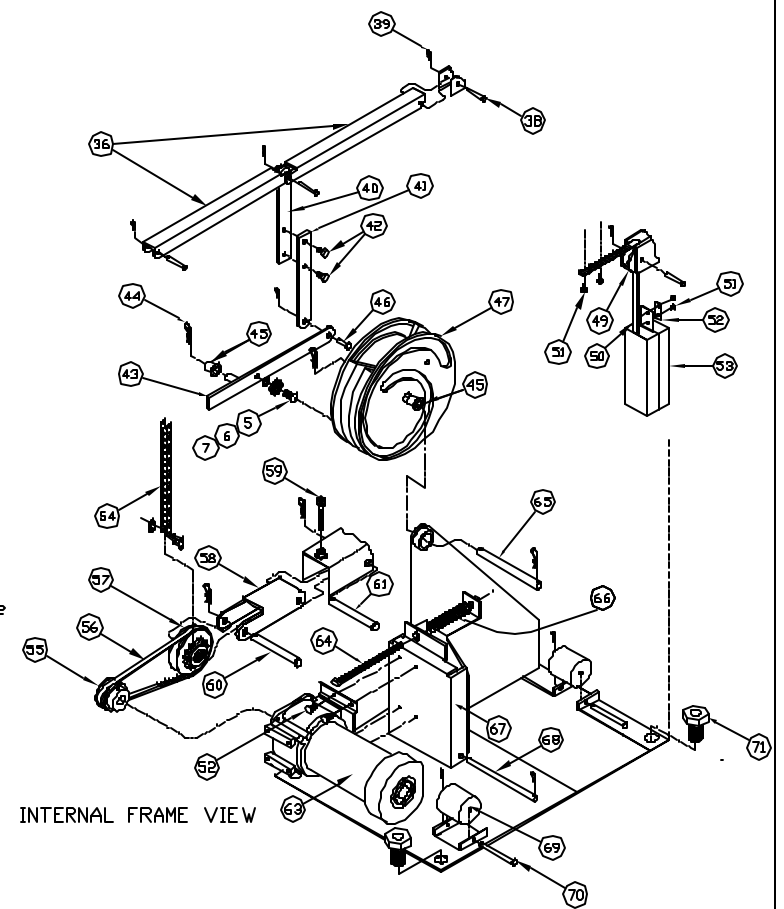
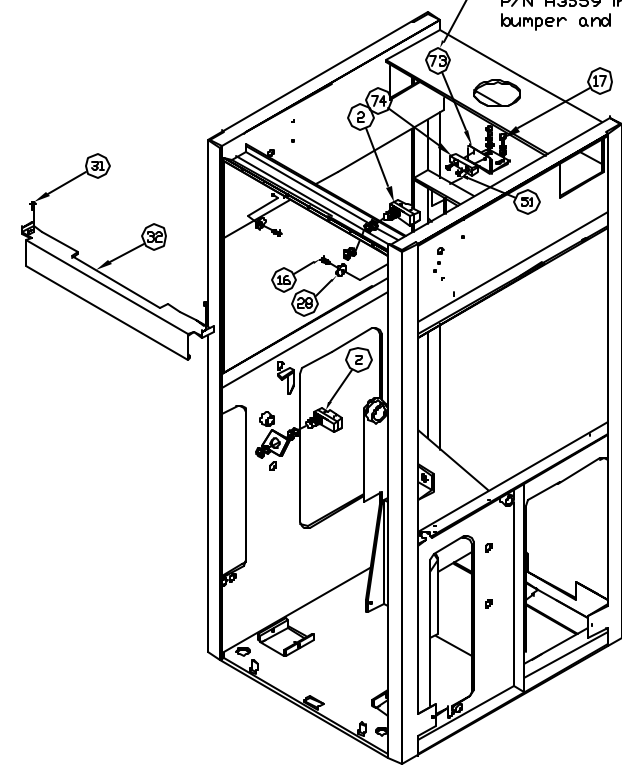


FOR CARRIER PARTS REFER TO DRAWING B6594 EXPLODED VIEW.



Retro fit kit available for units without it P/N H3559 includes bumper and hardware.



INTERNAL FRAME VIEW

REVISION 2/3/10 (ADDED WEAR STRIPS ITEM #29 AND AND CHANGED DESCRIPTION OF ITEM #28)

HAMILTON AIR PRODUCTS		
SCALE:	MATERIAL:	DRAWN BY: J. STEWART
SCALE FACTOR:	AS NOTED	REVISION:
TITLE: HA33 TELLER UNIT EXPLODED PARTS (MARK 2)		
DATE: MAY 25 2000	DRAWING NUMBER: 99-727 SHEET 1 OF 2	REVISION:

ITEM	PART NO.	DESCRIPTION	QTY.
1	BX-935B	BRACKET DOOR HEIGHT	1
2	E6001	SWITCH / PLUNGER	1
3	PL*	10-32 X 1/2 SELF TAPPING SCREW	1
4	BY-101	RECEIVER LOWER	1
5	H9010	3/8-16-3/4 BHCFF	1
6	H9048	CAM ROLLER BEARING	1
7	H9055	SHIM 3/8 X 1/32	1
8	H9029	3/8" O-RING WASHER	1
9	BX-981-B	3/8" PLUNGER ROD	1
10	H9044	SPRING COMPRESSION	1
11	B6001	1/2" SCH 40 BLACK PIPE THRD. ONE END	1
12	H9064	CLAMP HOSE	1
13	E6002	SWITCH ROLLER	1
14	BX-950	BRACKET CARRIER PRESENT	1
15	BY-102	HOUSING	1
16	H9015	8-32-UNDERCUT PHIPPIPS HEAD	22
17	H0026	1/4-20-1/2 HEX	12
18	BX-991	VALUE, 33 ARIVAL	1
19	H0392	8-32 X 3/8 TRKS TH SS	2
20	BX-991-A	AIR FLAP RETAINER	1
21	B6594	10" LEXAN CARRIER	1
22	BY-100	10" RECEIVER UPPER TUBE ASSEMBLY	1
23	H0318	5/16 X 3/4 HEX	8
24	H0324	WASHER 5/16 LOCK	1
25	H	5/16 STOP NUT	1
26	PL*	8-32 STAR NUT	1
27	PL*	FENDER WASHER #10 - 11/16	1
28	BX-954	WEAR PAD, UPPER RECEIVER SPACER DISC	8
29	BX-955	WEAR PAD, LOWER RECEIVER	4
30	H9032	6' ORANGE DOOR SEAL CORD	1
31	PL*	10 - 32 X 3/8 BUTTON HEAD	1
32	BX-914	UPPER FRONT PANEL	1
33	BX-807A	PIVOT BRACKET RH	1
34	BX-807B	PIVOT BRACKET LH	1
35	PL*	1/4 X 20 STOP NUT	1
36	BX-805	LINK	2
37	PL*	1/4 X 20 X 1 1/2 SOCKET HEAD	1
38	H9023	CLEVIS 1/4 X 1 3/4	1
39	H9027	COTTER PIN (SMALL)	1
40	BX-946	PIVOT ARM UPPER	1
41	BX-946	PIVOT ARM LOWER	1
42	PL*	5/16 X 1/2 HEX	1
43	BX-947	MAIN PIVOT ARM	1
44	H9028	COTTER PIN (LARGE)	1
45	H9047	BUSHING (FLANGED)	5
46	H9022	CLEVIS 5/16 X 7/8	1
47	BY-103	CAM DOOR DRIVE ASSEMBLY	1
48	.	.	1
49	B5696	PULLEY	1
50	H9065	21" TIMING BELT	1
51	H0234	10 - 32 X 3/8 TRUSS HEAD	14
52	H9067	PLATE RETAINING (COUNTER WEIGHT)	1
53	B6005	COUNTER WEIGHT	1

ITEM	PART NO.	DESCRIPTION	QTY.
54	H9018	6/A CHAIN MASTER LINK	1
55	H9031	PULLY 33 DOOR DRIVE	1
56	H9049	BELT DRIVE	1
57	BY-104	SPROCKET 33 DOOR DRIVE	1
58	BX-908	IDLER ARM	1
59	H9066	3/8" -16 X 2 /12" HX HD TAP BOLT	1
60	H9025	CLEVIS 1/2 X 2 1/2	1
61	H9026	CLEVIS 1/4 X 3	1
62	PL*	BOLT FOR MOTOR 1/4" X 1/2" HX, HD	1
63	E6009	MOTOR HA33 DOOR WITH CAPACITOR	1
64	H9051	1/4" X 1/2" HEX HEAD	4
65	BX-980A	DOOR DRIVE PIN = .500 X 5.500	1
66	H9009	SPRING DRIVE TENSION	1
67	BX-911	MOTOR SURPORT PLATE	1
68	BX-980B	PIVOT DOOR MOUNT - 7/16 X 6 1/4	1
69	BX-937	ROLLER	1
70	H9024	CLEVIS 1/4" X 3"	1
71	H9052	1-8 HX JAM NUT	1
72	H9013	6/32 ROD END BUMPER	1
73	BX-998	DOOR STOP BRACKET	2
74	B2551	DOOR STOP BUMPER	2

NOTE: PL* = PURCHASE LOCALLY

HAMILTON AIR PRODUCTS			
SCALE: 1" = 1"	MATERIAL:	DRAWN BY: J. STEWART	
SCALE FACTOR: 1		BY: ALLOWED:	
TITLE: HA33 TELLER EXPLODED PARTS			
DATE: MAY 26 2000	DRAWING NUMBER: 99-727	REVISION:	
	SHEET 2 OF 2		

REVISION 2/3/10 (ADDED WEAR STRIPS ITEM #29 AND AND CHANGED DESCRIPTION OF ITEM #28)