

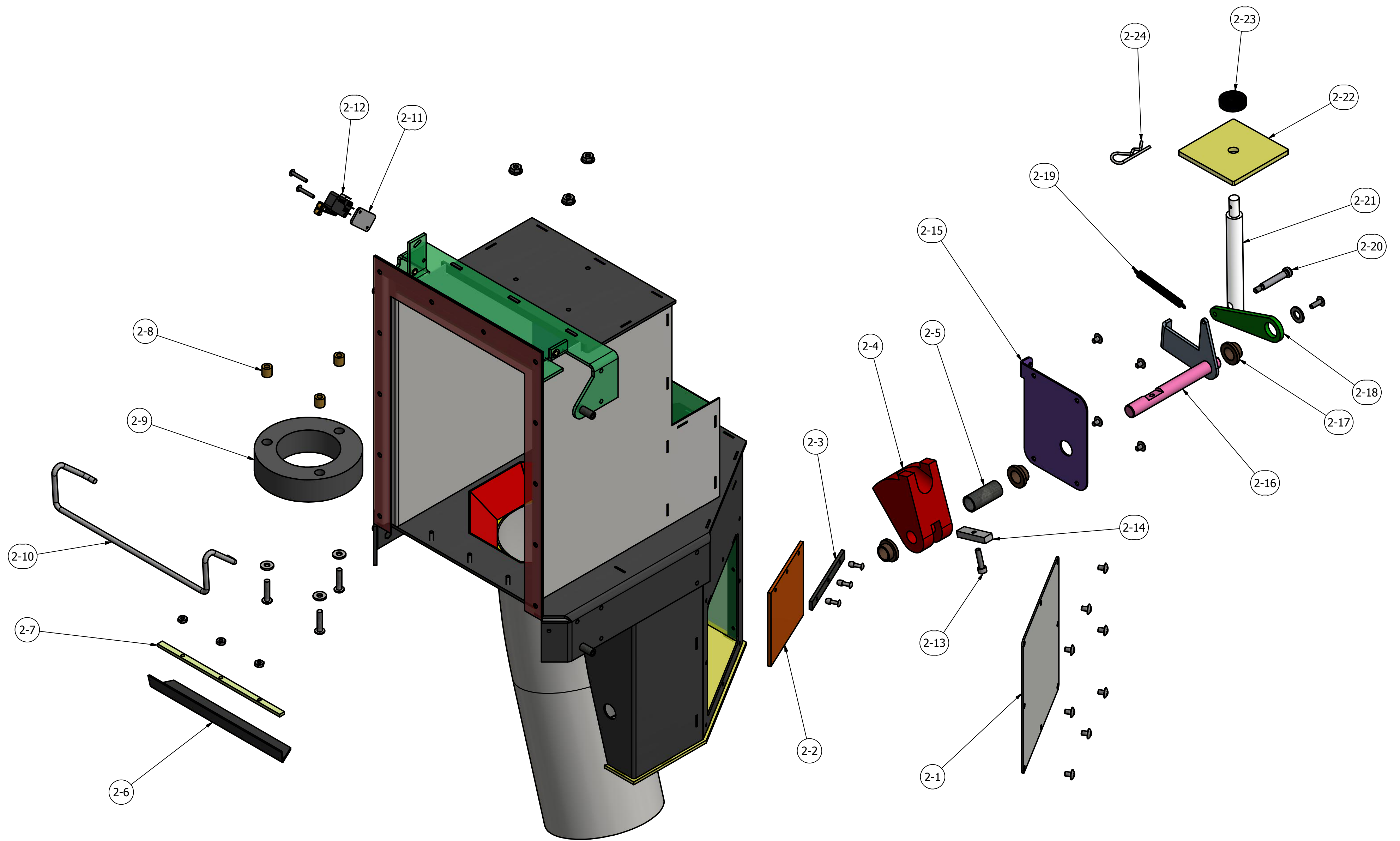
SHEET 1 OF 5

**HAMILTON AIR**

PNEUMATIC TUBE SYSTEMS  
 MODEL HA1000-XLR DOWN SEND  
 CUSTOMER UNIT PARTS DETAILS

THESE DRAWINGS ARE THE  
 PROPERTY OF HAMILTON SAFE CO.  
 AND SHALL NOT BE REPRODUCED  
 OR COPIED OR USED AS THE BASIS  
 FOR MANUFACTURE OR SALE OF  
 APPARATUS WITHOUT PERMISSION

DATE:	DRAWING NUMBER:	REVISION
12/3/2014	99-1161	--



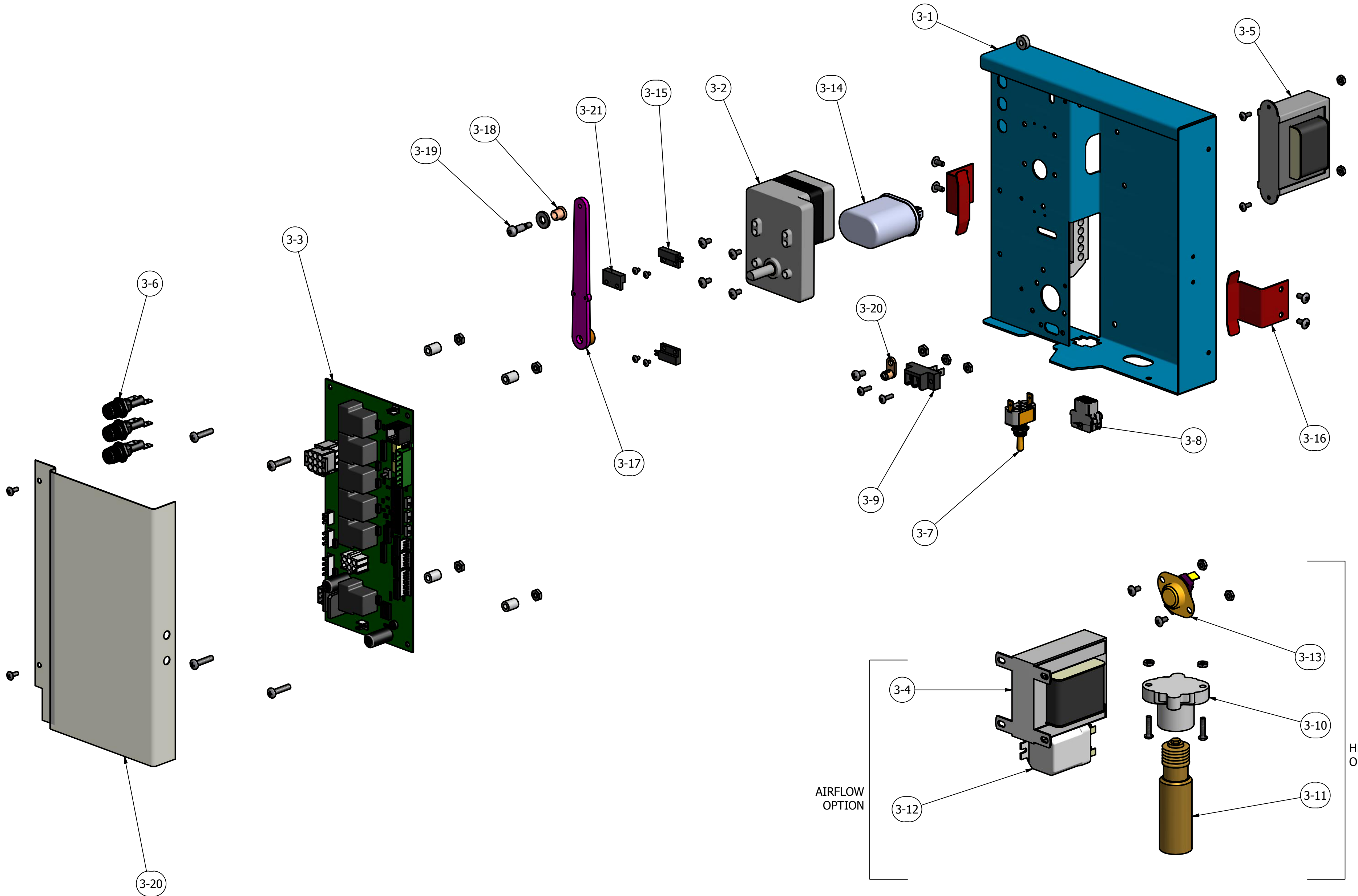
SHEET 2 OF 5

**HAMILTON AIR**

PNEUMATIC TUBE SYSTEMS  
 MODEL HA1000-XLR DOWN SEND  
 CUSTOMER UNIT PARTS DETAILS

THESE DRAWINGS ARE THE  
 PROPERTY OF HAMILTON SAFE CO.  
 AND SHALL NOT BE REPRODUCED  
 OR COPIED OR USED AS THE BASIS  
 FOR MANUFACTURE OR SALE OF  
 APPARATUS WITHOUT PERMISSION

DATE:	DRAWING NUMBER:	REVISION
12/3/2014	99-1161	--



SHEET 3 of 5

**HAMILTON AIR**

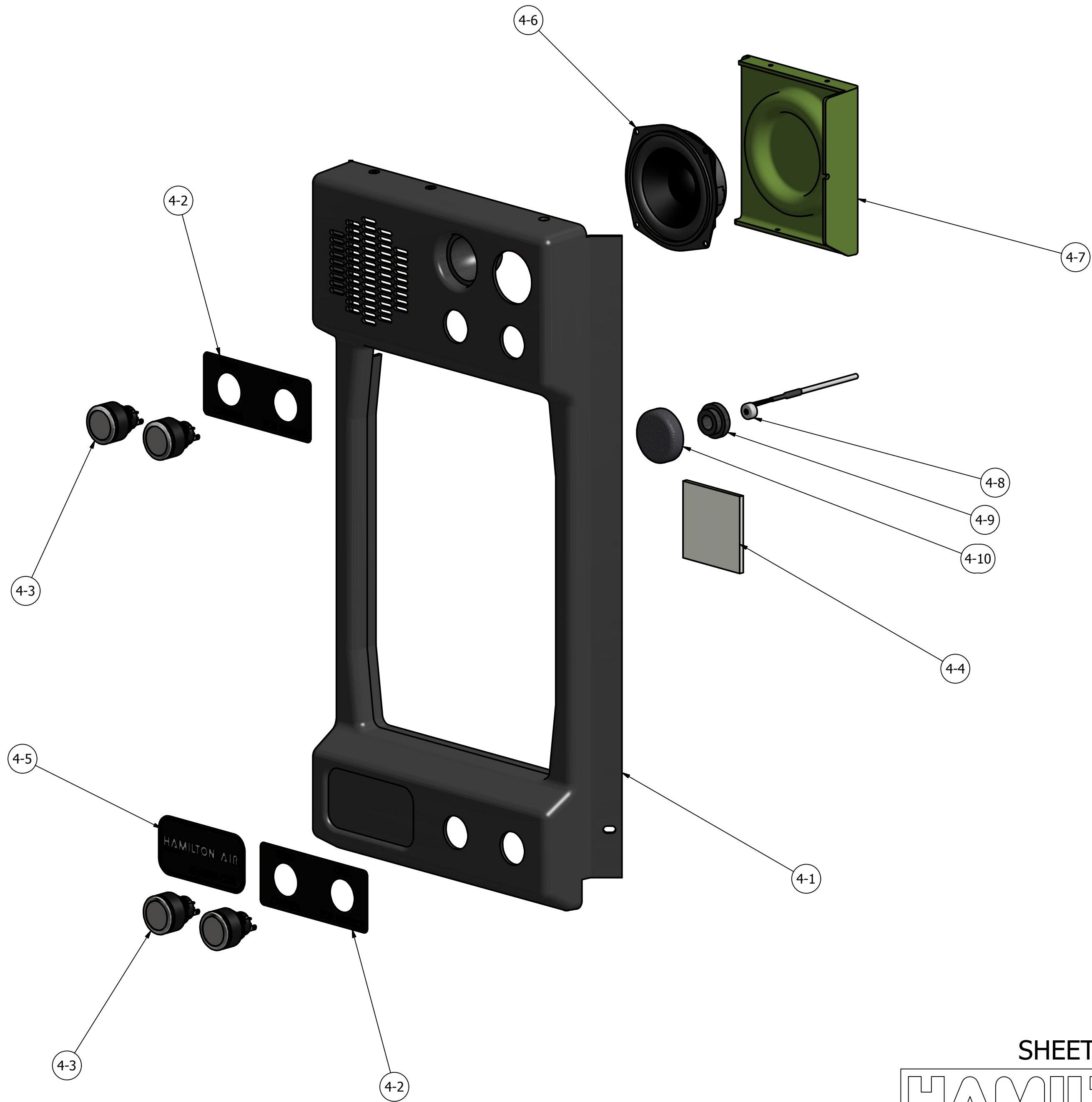
PNEUMATIC TUBE SYSTEMS  
 MODEL HA1000-XLR  
 CUSTOMER UNIT PARTS DETAILS

THESE DRAWINGS ARE THE  
 PROPERTY OF HAMILTON SAFE CO.  
 AND SHALL NOT BE REPRODUCED  
 OR COPIED OR USED AS THE BASIS  
 FOR MANUFACTURE OR SALE OF  
 APPARATUS WITHOUT PERMISSION

DATE:  
 12/3/2014

DRAWING NUMBER:  
 99-1161

REVISION  
 --



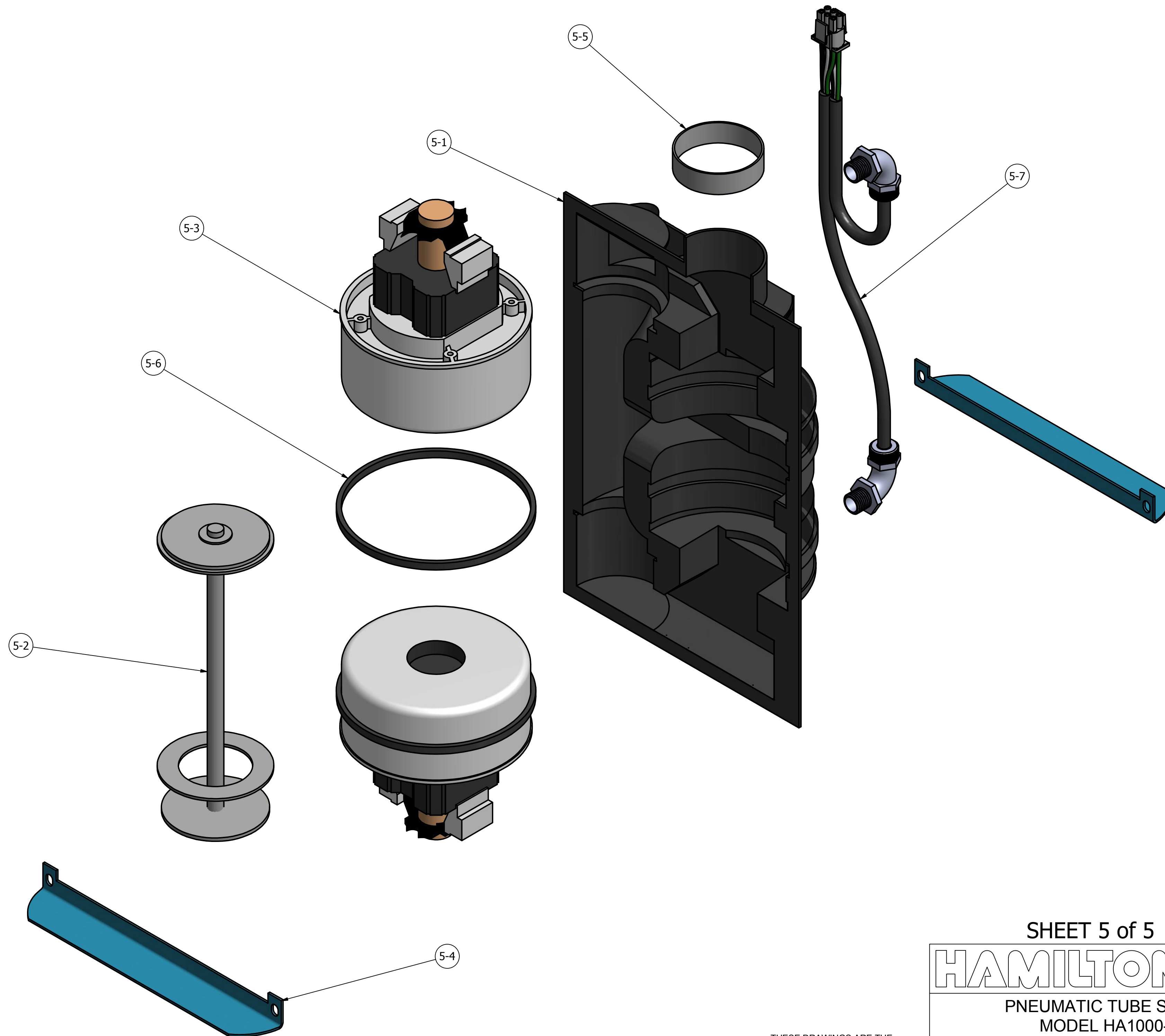
SHEET 4 of 5

**HAMILTON AIR**

PNEUMATIC TUBE SYSTEMS  
 MODEL HA1000-XLR  
 CUSTOMER UNIT PARTS DETAILS

THESE DRAWINGS ARE THE  
 PROPERTY OF HAMILTON SAFE CO.  
 AND SHALL NOT BE REPRODUCED  
 OR COPIED OR USED AS THE BASIS  
 FOR MANUFACTURE OR SALE OF  
 APPARATUS WITHOUT PERMISSION

DATE:	DRAWING NUMBER:	REVISION
12/3/2014	99-1161	--



SHEET 5 of 5

**HAMILTON AIR**

PNEUMATIC TUBE SYSTEMS  
 MODEL HA1000-XLR  
 CUSTOMER UNIT PARTS DETAILS

THESE DRAWINGS ARE THE  
 PROPERTY OF HAMILTON SAFE CO.  
 AND SHALL NOT BE REPRODUCED  
 OR COPIED OR USED AS THE BASIS  
 FOR MANUFACTURE OR SALE OF  
 APPARATUS WITHOUT PERMISSION

DATE:	DRAWING NUMBER:	REVISION
12/3/2014	99-1161	--

Ref #	Item #	Description	Rev.	Qty.
<b>HA1000-XLR Downsend (Sheet 1)</b>				
1-1	G45D-209	Base	-	1
1-2	G45-212	Rear Panel	B	1
1-3	G45D-214	Top Cap Molded Tapered	A	1
1-5	B10343	Door	1	1
1-6	G45-243	Front Upper Right Cover	-	1
1-8	G45-248	Front Upper Left Cover	-	1
1-10	B10531	XLR Turbine Unit		1
1-11	G45-244	Front Lower Panel	-	1
1-12	H1120	CAT30 Lock Assembly	-	1
1-13		8-32 x 3/8 Phillips Truss Stainless	-	10
1-14	H1074	3" Hose Clamp		2
1-15	B2948	3" Flex Hose, 6" Long		1
1-16	G45D-213	Side Extension Panels - XLRD		2
1-17	G45D-260	Island Template - XLRD		1
1-18	G45D-217	Support, Turbine - XLRD		1
1-19	G45D-212	Connection Tube Bend Segment		1
1-20	T9208	Clamp Sleeve, 4-1/2" 2-bolt		2
<b>Carrier Pocket Downsend (Sheet 2)</b>				
1-4				
2-1	G45D-252	Cover Panel, Air Chamber	-	1
2-2	G45D-702	Vacuum Flap Valve		1
2-3	G45D-701	Retainer, Vacuum Flap Valve	-	1
2-4	G45D-261	Detent, Carrier	-	1
2-5	G45D-258	Spacer, Detent Check Shaft	-	1
2-6	B5386	Seal, Brake Check and Door, HA45-029	-	1
2-7	B5382	Retainer Plate, Check Valve/Door Seal		1
2-8	B-4006-10	Spacer, 3/8x3/8x.196		3
2-9	B4123	Bumper, Carrier	-	1
2-10	G45-235	Safety Bar	-	1
2-11		Switch Backup Tap Plate		1
2-12	E0173	Switch, Roller Lever Mini	-	1
2-13	KC10F75/Z	Socket Head Cap Screw 10-32 x 3/4		1
2-14	G45D-236	Tap Black, Detent	-	1
2-15	G45D-257	Detent Pivot Mounting Panel	-	1
2-16	G45D-262	Detent Shaft Welded Assembly	-	1
2-17	H10204	1/2x5/8x3/8 Flange Bearing	-	3
2-18	G45D-235	Arm, Detent Valve		1
2-19		Spring, Extension	-	1
2-20		Socket Shoulder Bolt 1/4x1-1/4	-	1
2-21	G45D-259	Detent Activator Rod	-	1
2-22	G45D-248	Detent Disc	-	1
2-23	B5384	Washer, Rubber		1
2-24	H0378	Cotter Pin		1
<b>Electrical Panel (Sheet 3)</b>				
1-9				
3-1	G45-213	Electric Panel	C	1
	G45-213-1	Top, Electric Panel	A	1
	G45-213-2	Bottom, Electric Panel	A	1
3-2	E0419	Door Motor	-	1
3-3	E0873-C	I/O Control Board	G	1
3-4	E6031	Transformer, 4 amp	-	Opt.
3-5	E0504	Transformer, 2 amp	-	1
3-6	E0088	Fuse Holder	-	2
3-7	11TS95-2	Switch, Toggle	-	1

Ref #	Item #	Description	Rev.	Qty.
3-8	1-480705-0	Plug, AMP (Turbine)	-	1
3-9	BC6-Q308-02	Terminal Strip, 2 Position	-	1
3-10	E0701	Socket, Heater	-	Opt.
3-11	E0704	Element, Heater 75watt	-	Opt.
3-12	E10013	Relay, Airflow	-	Opt.
3-13	E0961	Thermostat, Heater	-	Opt.
3-14	E0106	Capacitor, Door Motor	-	1
3-15	MP201802	Switch, REED NC door switch	-	2
3-16	G45-225	Guide, Door	A	2
3-17	G45-256	Crank Arm, Door	-	1
	H1050	Shaft Collar, 0.312 ID	-	1
3-18	H0374	3/8 x 3/8 Flanged Bronze Bushing #SF-812-6	-	1
3-19		1/4 x 1/2 Socket Shoulder Screw, 18-8 Stainless	-	1
3-20	G45-255	Cover, Circuit Board Shield	A	1
3-21	AS201801	Magnet, Door REED Switches	-	1
3-22	E0625	Lug, Ground, #71003-TB	-	1
	E0092	Fuse, 3 amp	-	1
	E0446	Fuse, 20 amp	-	1
	350218-1	Contact, AMP Pin 5000/Reel (Turbine)	-	6
	E0088	Fuse Holder	-	Opt.
	E0496	Fuse, 5 amp	-	Opt.
1-7	<b>Front Fascia (Sheet 4)</b>			
4-1	G45-211	Front Fascia Plastic	-	1
4-2	G45-258	Label, Send-Call	-	2
4-3	YB215CWCPW01-N-P	NKK Pushbuttons YB2, Chrome	-	4
4-4	G45-259	Glass Window, Camera	-	1
4-5	G45-257	Label, Hamilton Name	-	1
4-6		Speaker, 3"	-	1
4-7	G45-226	Speaker Enclosure Back	-	1
4-8	E10064	Microphone, 48"	-	1
4-9	H3409	Bushing, Microphone Mount - 400DD (#9305K28)	-	1
4-10	G45-239	Foam, Microphone Wind	-	1
1-10	<b>B10531 G45 Turbine (Sheet 5)</b>			
5-1	B10530	Turbine, Complete Composite	-	1
5-2	B10529	Valve Assembly, Composite Turbine	-	1
5-3	E0118	Ametek Vacuum Motor	-	2
5-4	G45-241	Mounting Stand Turbine	A	2
5-5	MTP-006	Tube, Exhaust Reinforcement	-	1
5-6	G45-503	Seal, Turbine Motor	-	2
5-7	1-480704-0	Plug, Amp	-	1
		Vacuum Power Cord (Long)	-	1
		Pressure Power Cord (Short)	-	1
	E10024	90 Degree Cord Grip	-	2
	<b>Option: 2-Way Video (Sheet 6)</b>			
	G45-243-1	Front Upper Right Cover with Video	-	Opt.
	G45-245	Video Arm Mounting Plate	-	Opt.
	G45-246	Video Arm Tube	-	Opt.
	G45-247	Video Arm to 5517 Mounting Plate	-	Opt.
	G45-249	Video Arm Cover	-	Opt.
	G45-250	Video Arm Cover Filler	-	Opt.