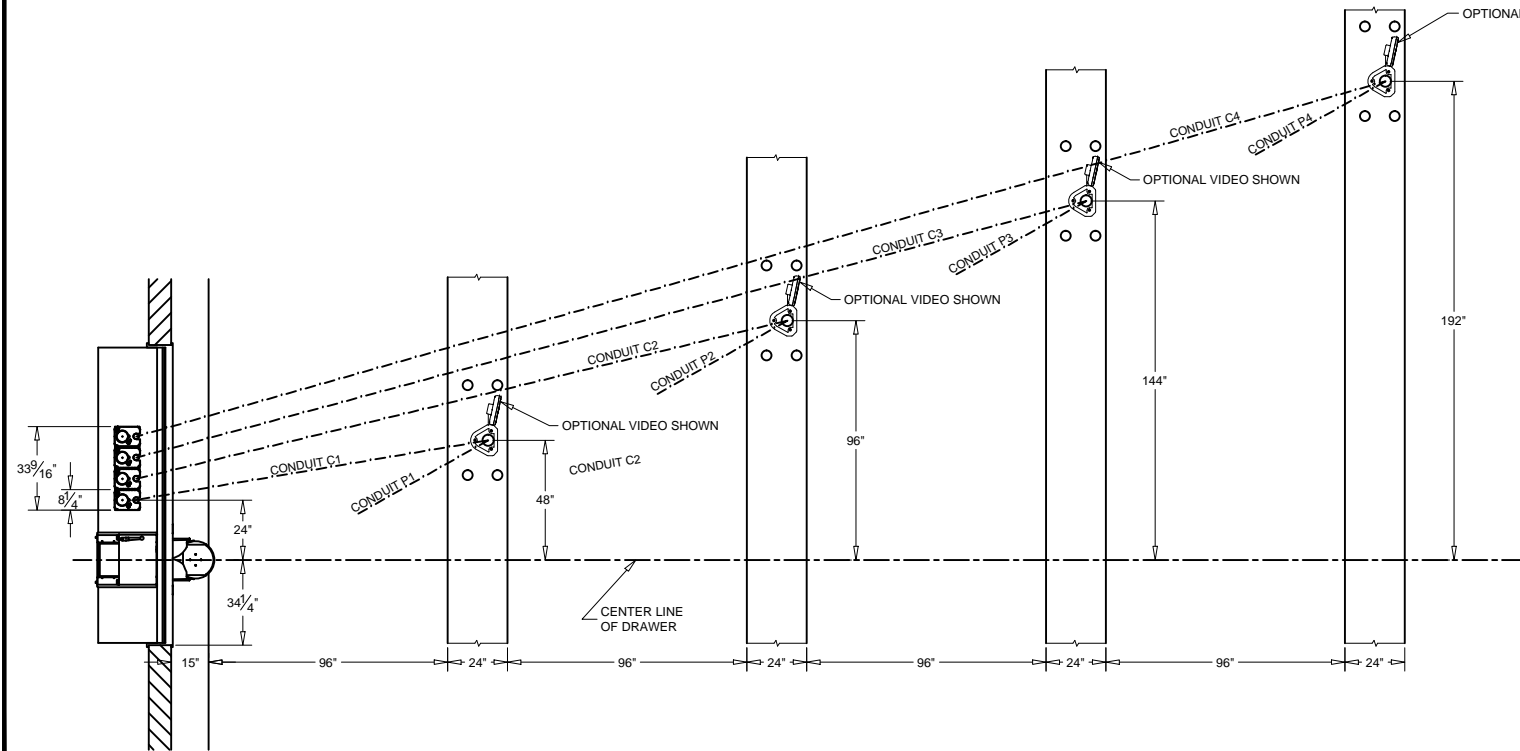


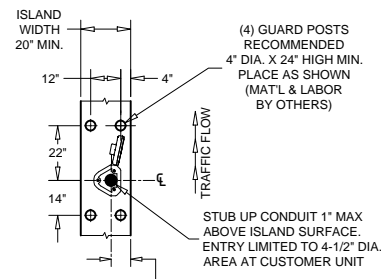
SECTION

MASONRY DETAIL  
(FOR MODEL 310D U.L. WINDOW)



PLAN

CONDUIT 'P' FOR POWER  
120VOLT, 60HZ, 20 AMP  
DEDICATED BRANCH CIRCUIT  
REQUIRED FOR EACH CUSTOMER UNIT.



ISLAND DETAIL

ADDITIONAL DRAWINGS TO REFERENCE:  
95-696, 99-915, & 99-1140

NOTE: CONDUIT 'P' TO BUILDING POWER PANEL  
CONDUIT 'C' TO JUNCTION BOX BELOW COUNTER  
AND EXTENDED ABOVE CEILING TO TELLER AREA

THESE DRAWINGS ARE THE  
PROPERTY OF HAMILTON SAFE CO.  
AND SHALL NOT BE REPRODUCED  
OR COPIED OR USED AS THE BASIS  
FOR MANUFACTURE OR SALE OF  
APPARATUS WITHOUT PERMISSION

<b>HAMILTON AIR</b>		
PNEUMATIC TUBE SYSTEMS MODEL HA1000-XLR		
"412" SYSTEM - OVERHEAD TUBING		
DATE: 2/12/2015	DRAWING NUMBER: 99-1152	REVISION: --