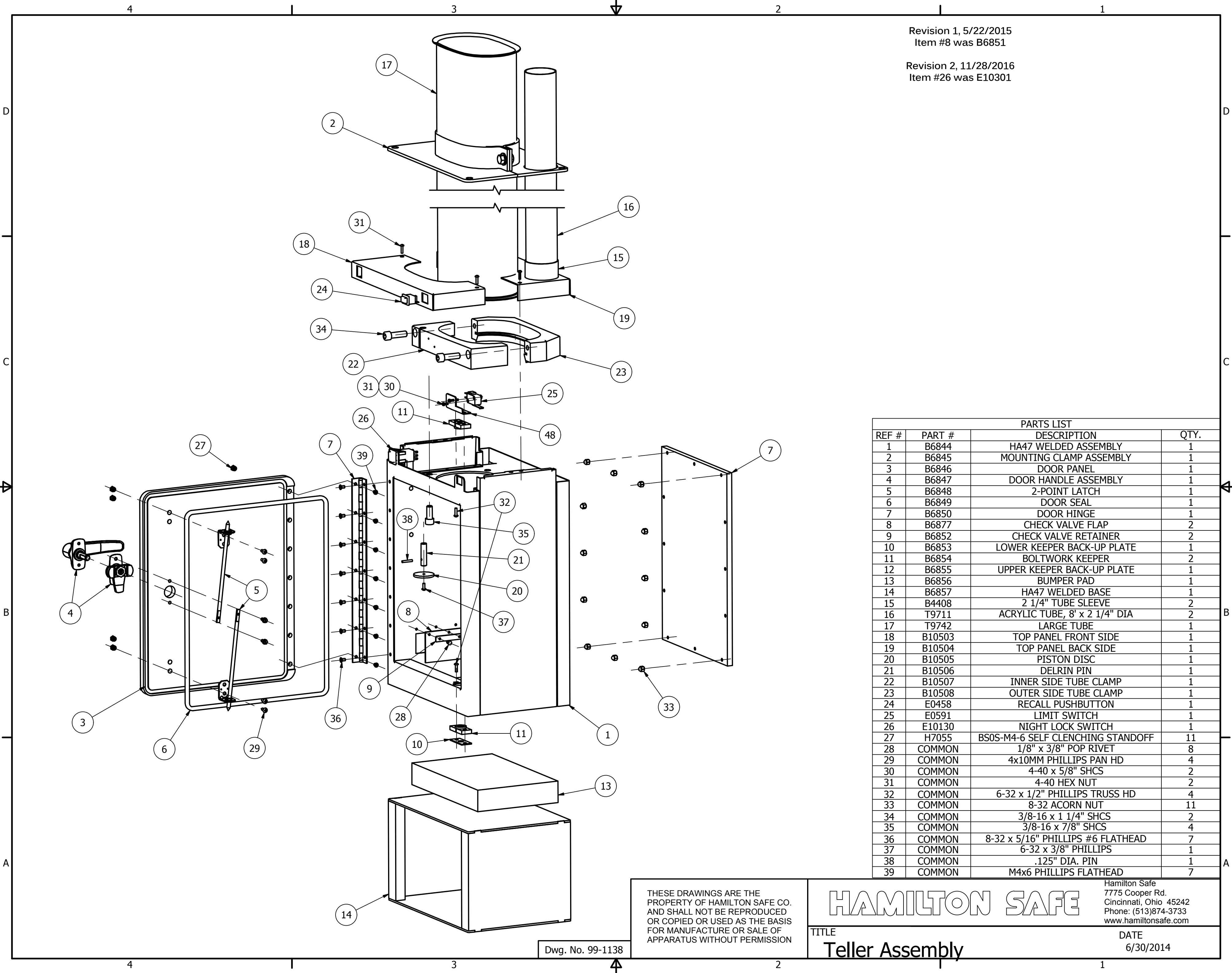


Revision 1, 5/22/2015
Item #8 was B6851

Revision 2, 11/28/2016
Item #26 was E10301



PARTS LIST			
REF #	PART #	DESCRIPTION	QTY.
1	B6844	HA47 WELDED ASSEMBLY	1
2	B6845	MOUNTING CLAMP ASSEMBLY	1
3	B6846	DOOR PANEL	1
4	B6847	DOOR HANDLE ASSEMBLY	1
5	B6848	2-POINT LATCH	1
6	B6849	DOOR SEAL	1
7	B6850	DOOR HINGE	1
8	B6877	CHECK VALVE FLAP	2
9	B6852	CHECK VALVE RETAINER	2
10	B6853	LOWER KEEPER BACK-UP PLATE	1
11	B6854	BOLTWORK KEEPER	2
12	B6855	UPPER KEEPER BACK-UP PLATE	1
13	B6856	BUMPER PAD	1
14	B6857	HA47 WELDED BASE	1
15	B4408	2 1/4" TUBE SLEEVE	2
16	T9711	ACRYLIC TUBE, 8' x 2 1/4" DIA	2
17	T9742	LARGE TUBE	1
18	B10503	TOP PANEL FRONT SIDE	1
19	B10504	TOP PANEL BACK SIDE	1
20	B10505	PISTON DISC	1
21	B10506	DELTRIN PIN	1
22	B10507	INNER SIDE TUBE CLAMP	1
23	B10508	OUTER SIDE TUBE CLAMP	1
24	E0458	RECALL PUSHBUTTON	1
25	E0591	LIMIT SWITCH	1
26	E10130	NIGHT LOCK SWITCH	1
27	H7055	BS0S-M4-6 SELF CLENCHING STANDOFF	11
28	COMMON	1/8" x 3/8" POP RIVET	8
29	COMMON	4x10MM PHILLIPS PAN HD	4
30	COMMON	4-40 x 5/8" SHCS	2
31	COMMON	4-40 HEX NUT	2
32	COMMON	6-32 x 1/2" PHILLIPS TRUSS HD	4
33	COMMON	8-32 ACORN NUT	11
34	COMMON	3/8-16 x 1 1/4" SHCS	2
35	COMMON	3/8-16 x 7/8" SHCS	4
36	COMMON	8-32 x 5/16" PHILLIPS #6 FLATHEAD	7
37	COMMON	6-32 x 3/8" PHILLIPS	1
38	COMMON	.125" DIA. PIN	1
39	COMMON	M4x6 PHILLIPS FLATHEAD	7

THESE DRAWINGS ARE THE PROPERTY OF HAMILTON SAFE CO. AND SHALL NOT BE REPRODUCED OR COPIED OR USED AS THE BASIS FOR MANUFACTURE OR SALE OF APPARATUS WITHOUT PERMISSION

HAMILTON SAFE

Hamilton Safe
7775 Cooper Rd.
Cincinnati, Ohio 45242
Phone: (513)874-3733
www.hamiltonsafe.com

TITLE: **Teller Assembly** DATE: 6/30/2014

Dwg. No. 99-1138