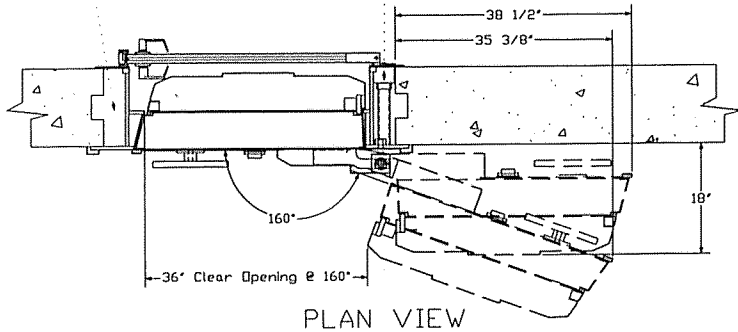
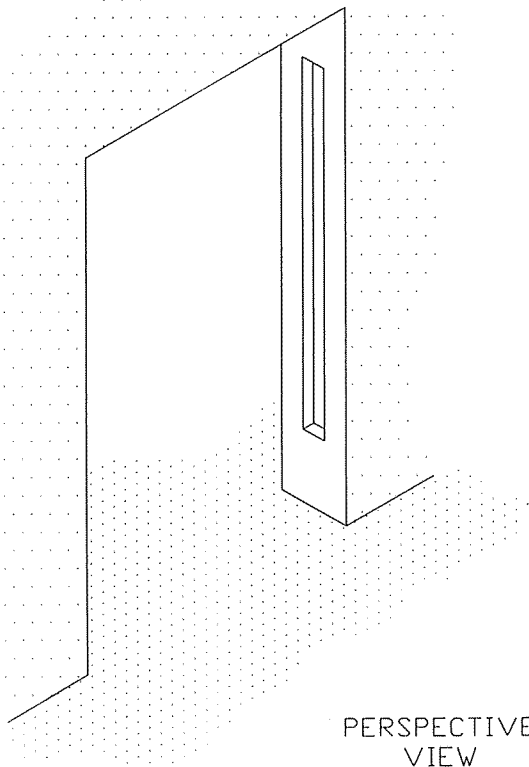


General Contractor Note:
 It is factory recommended that the owners general contractor grout in the space between the vestibule and concrete wall after the vault door is installed. Grout to consist of clean sand and cement using formulation to provide 3000 P.S.I. (Equivalent to 6 bag mix).

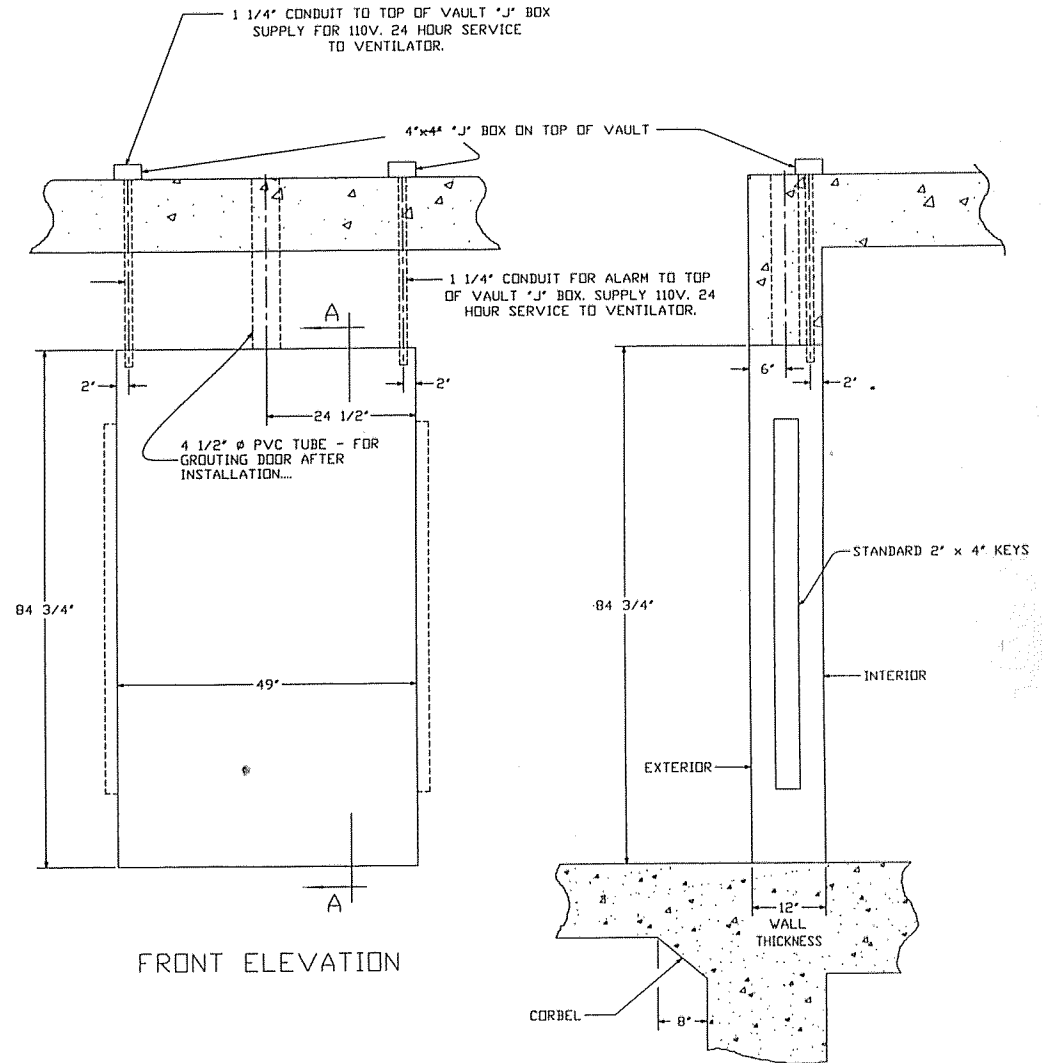
Caution:
 Grouting using mechanical or hydraulic methods may result in damage to the vault door.



PLAN VIEW



PERSPECTIVE VIEW



FRONT ELEVATION

SECTION "A-A"

NOTES :

1. Foundation for door shall be designed to support 35,000 lbs. This includes weight of door plus screw pressure applied at top of door frame. Screw jacks hold door frame in position. Front side must be designed with corbel as shown in section "A-A".
2. Contractor to provide opening as specified material & labor to grout around door.

REV.-1	DATE: 2-15-07	ADDED GROUTING DETAILS TO DRAWING.
REV.-2	DATE:	
REV.-3	DATE:	

HAMILTON SAFE

MASONRY DETAILS
 HAMILTON UL LISTED DOORS

Drawing Number : 95-172 Date : 1-9-95