

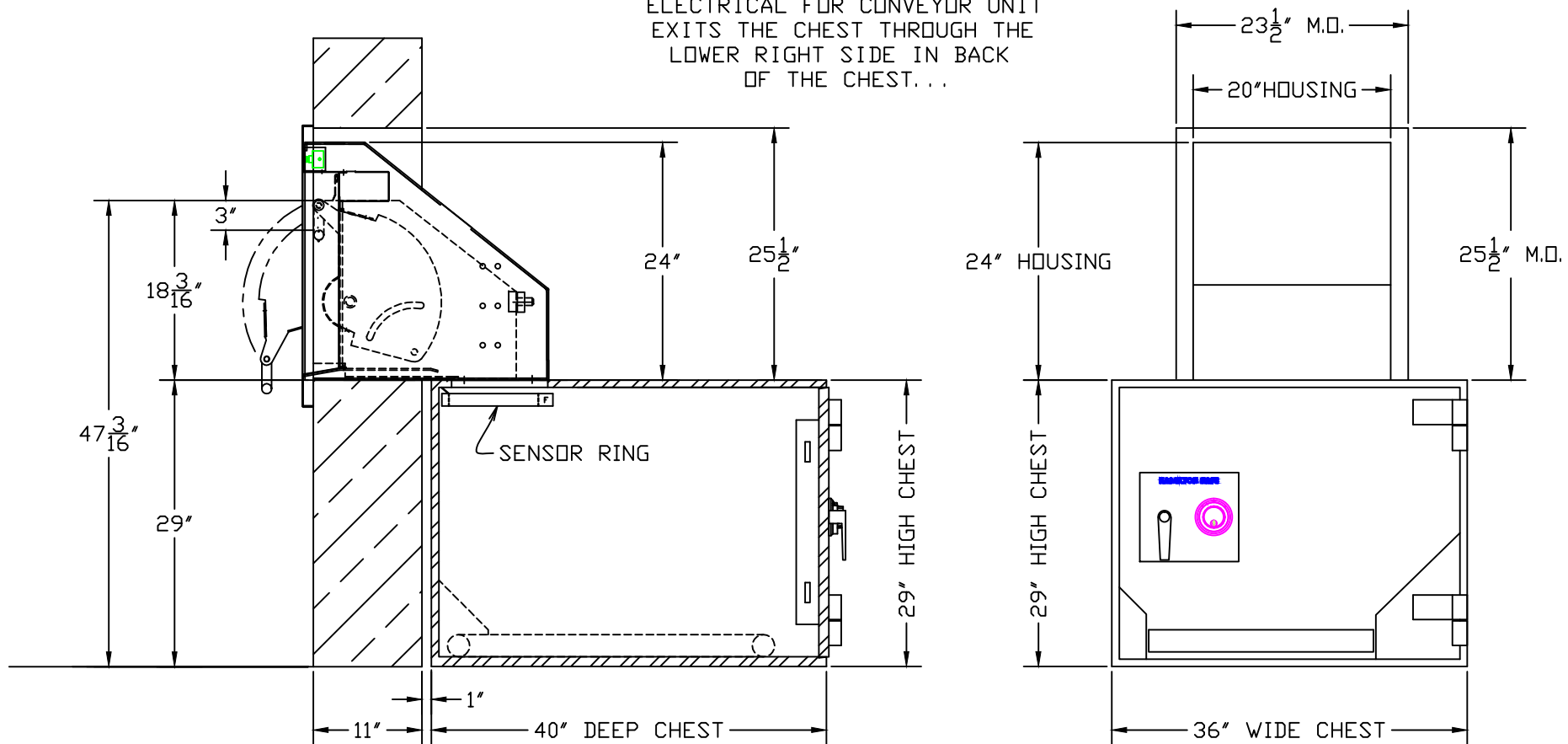
Rev - 1 09-16-11 UPDATED FOR A.D.A.

Rev - 2 5/10/12 UPDATED DRAWING

25 1/2" HIGH x 23 1/2" WIDE WALL OPENING

NOTE

ELECTRICAL FOR CONVEYOR UNIT
EXITS THE CHEST THROUGH THE
LOWER RIGHT SIDE IN BACK
OF THE CHEST...



HAMILTON SAFE	
80UC (WALK-UP) WITH CONVEYOR SYSTEM (CHEST EMPTYING SWITCH)	
Drawing Number : 92-558	Date : 2-12-92