

8000 Series Hybrid NVR

Recording and Video Management Platform



The most powerful, reliable, feature-rich hybrid NVR in the industry. The 8000 Series Hybrid NVRs deliver video that's always there when you need it, and the advanced tools that allow you to quickly find the evidence you need. Our solutions help you get your job done faster—from installation to investigation—with these appliance-based hybrid NVRs as the backbone. They reinforce our reputation for manufacturing the most robust, reliable, and feature-rich recorder on the market, and allow you to migrate from 100% analog to 100% IP video at your own pace. And depending on your needs, we offer both a browser-based thin client and a family of thick clients, both of which provide powerful interfaces to enhance security and improve productivity.



SHARPER IMAGES FROM YOUR EXISTING ANALOG CAMERAS

The recorder's optimized H.264 compression — unique to March Networks — delivers detailed HD video and noticeably sharper images from your legacy analog cameras without impacting video storage resources.

THE PURPOSE-BUILT ADVANTAGE

Our recorders are embedded, Linux-based, purpose-built devices, designed to record video 24/7. Customers are looking for a recording solution that allows them to spend more time performing investigations and less time dealing with maintenance issues that can plague a PC-based recorder.

UNPARALLELED SCALABILITY

From the small, local-control user with just a few cameras, who does not want to connect the recorder to a network...to the largest enterprise user with globally dispersed sites and thousands of recorders...the 8000 series NVR recording and management suite has a solution that will feel tailor-made to fit your unique application.

WE'VE GOT YOU COVERED

The 8000 series recorders incorporate an impressive breadth of security features to ensure your data is protected and your hardware continues to function. The internal battery backup guarantees a systematic shutdown in the event of an unexpected power loss. Hard drive mirroring ensures redundancy and allows for flexible use of storage. The built-in firewall guarantees that your network will comply with your IT department's guidelines. Watchdog circuitry for both hardware and software ensures that the recorder remains operational. And secure tunneling grants access only to authenticated users when it comes to devices connected to the recorder's camera network.

USE ANALYTICS TO IMPROVE YOUR BUSINESS

Our optional analytics can be integrated to address the unique needs of retailers and banking institutions of all sizes, and help them leverage their security investment and use video, combined with reporting tools, to analyze and improve their business.

FEATURES

- 16 and 32-channel models
- Choose from:
 - R-series (rack mount)
 - S-series (stack mount)
- Full Hybrid NVR solution to support both analog and IP, or 100% IP
- Multi-level H.264 encoding
- Embedded, Linux-based recorders
- Scan QR code on front panel to retrieve system information and reduce maintenance time
- Sophisticated configurable recording policies based on schedule, motion, analytics, etc.
- Real-time health monitoring of cameras, recorders, and network
- Network policies for bandwidth protection
- Choose from two powerful client solutions to manage your video
- Local display of both analog and IP cameras (HDMI and composite)
- Local control (interface standard on all models)
- Industry-leading interfaces to third party applications, including POS, ATM, teller, LPR, and access control
- Optional advanced video analytics

Helping integrators save time and money.

- ✓ Check warranty status
- ✓ Get express RMA
- ✓ Get in-field diagnostics support
- ✓ Saves integrators time and money



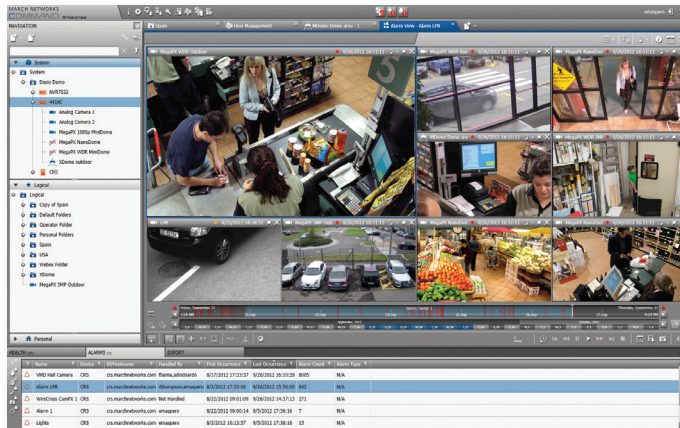
Different Management Solutions to Meet Your Unique Needs

March Networks offers two different video management solutions: a browser-based thin client (Command Enterprise), and a thick client (Visual Intelligence). Both incorporate a robust feature set, and powerful tools to meet your unique requirements.

What do they have in common?

Whether you choose Command Enterprise or Visual Intelligence, you get:

- Centralized system management and administration
- Health management
- User administration
- License administration
- Live monitoring
- Alarm management
- Investigation
- Extensive portfolio of third-party Integrations



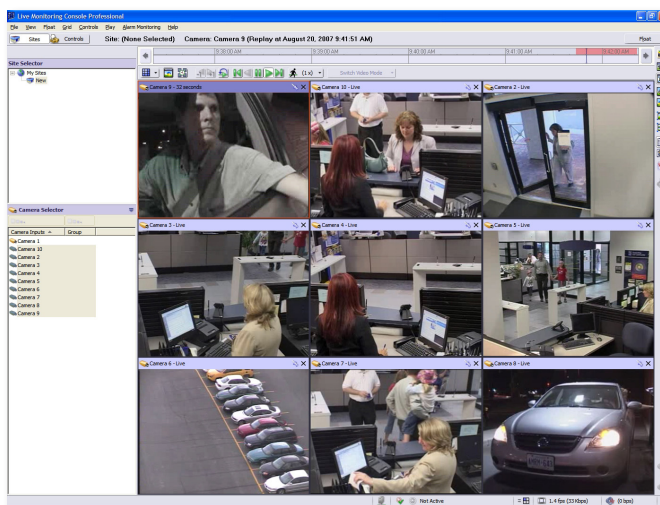
Command Enterprise is designed for simplicity and ease of use, which saves on training time and provides a smooth learning curve, allowing users to focus on their job.

COMMAND ENTERPRISE

Command Enterprise accommodates your browser of preference (Firefox, Internet Explorer, Safari, Chrome). As updates are made available they can be deployed easily via the Command Enterprise server; users have access to those updates each time they login.

Additional features you get with Command Enterprise include:

- SQL database support
- Microsoft Active Directory/LDAP
- Centralized upgrades and backup
- Customizable alarms
- Additional live monitoring features



Visual Intelligence provides tools that address the needs of a diverse range of user roles, including sophisticated investigation tools.

VISUAL INTELLIGENCE

Visual Intelligence employs a suite of applications that are designed specifically for the different system user roles and daily operational tasks these users perform.

Additional features you get with Visual Intelligence include:

- Exportable viewer
- Motion histograms
- Interactive case notes
- Robust case management
- Advanced health management features (such as health alert thresholds, health alert email system, health filtering for recorders via navigation tree)

Making Your Job Easier

March Networks Cloud

View your video on the go from your iOS/Android tablet or phone. It's Cloud-based, so no software downloads or updates are required, and it provides unlimited user access with no impact on recorder performance.



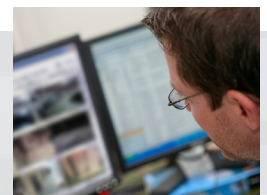
Searchlight Financial and Retail Transaction Investigation

The most cost-effective and robust software on the market today for investigating potentially fraudulent transactions at POS, teller, or ATM locations.



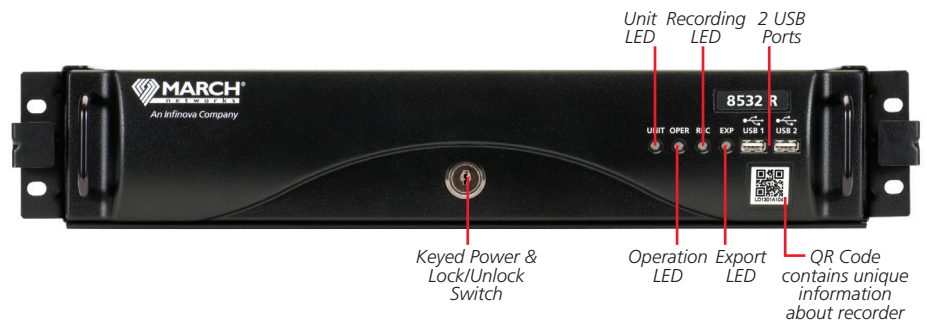
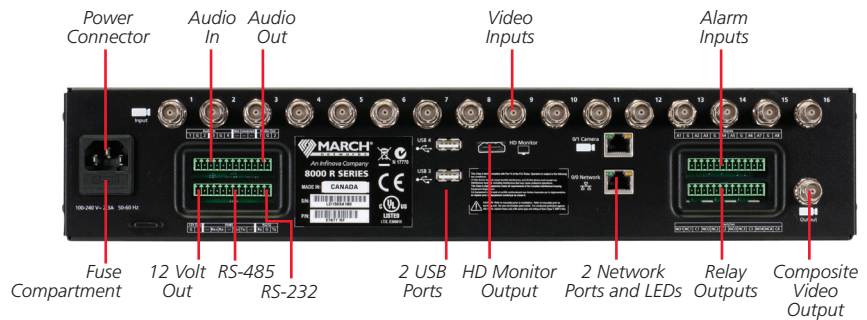
March Networks Managed Services

Leverage the expertise of skilled technicians at March Networks' 24/7 Network Operations Center to remotely monitor and manage your video systems. We will identify and initiate action on any system issues before they can affect performance.

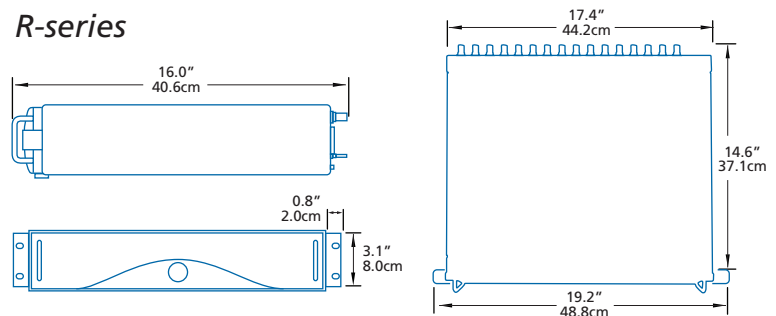


The Recorder

Available in 16 and 32-channel models, this recorder's full hybrid capabilities can bring you from 100% analog to 100% IP at your own pace. Multi-level H.264 encoding, scalable, reliable, backward-compatible and purpose-built for all your video, security, and management needs. This is truly the powerhouse behind the scenes.



R-series



DOCK IT AND LOCK IT

The only recorders in the industry to feature the innovative "dock and lock" station. Similar to the one designed for your PC, this docking station keeps all connections clean and securely connected to the back of the unit and allows for quick, easy installation of the recorder, as well as removal for service and maintenance. In addition, a lock switch turns the recorder on/off and locks it to the docking station, preventing removal, tampering or unauthorized shutdown of the recorder.

March Networks System Design Tool

Generate approximate storage and bandwidth estimations based on a variety of settings that you provide. Available via your desktop and mobile devices (iPad, iPhone and Android devices).



March Networks GURU Smartphone App

Available as a free download from the App Store, the industry's first smartphone app provides CSPs and Installers with a faster and easier way to access diagnostics and service information in the field, including troubleshooting tips, video tutorials, product warranty status, RMA shipment details and more.



8000 Series Hybrid NVR: Recording and Video Management Solutions

MODELS

8732 R-series¹	32 channels, 30fps, rack mount
8532 R-series¹	32 channels, 15fps, rack mount
8532 S-series¹	32 channels, 15fps, stacked
8516 S-series	16 channels, 15fps, stacked

VIDEO

Capacity	<p>8732 R 30fps concurrent at full 4CIF/2CIF/CIF across 32 channels (960fps)</p> <p>8532 R 15fps concurrent at full 4CIF/2CIF/CIF across 32 channels (480fps)</p> <p>8532 S 15fps concurrent at full 4CIF/2CIF/CIF across 32 channels (480fps)</p> <p>8516 S 15fps concurrent at full 4CIF/2CIF/CIF across 16 channels (240fps)</p>
Video Compression	H.264, CIF/2CIF/4CIF resolution
Max Analog Camera Inputs	16
Max IP Camera Inputs	32
IP Camera Performance	
8732 R, 8532 R, 8532 S	<p>With all analog cameras enabled, IP camera capacity = 48 Mbps</p> <p>With all analog cameras disabled, IP camera capacity = 96 Mbps (3Mbps / camera)</p>
8516 S	<p>With all analog cameras enabled, IP cameras are not available</p> <p>With all analog cameras disabled, IP camera capacity = 48 Mbps (3Mbps / camera)</p>
Video Output	Composite or HDMI

AUDIO

Analog Audio Inputs	4, unbalanced, 10kΩ, 1Vp-p typical
Analog Audio Outputs	2, unbalanced, 600Ω, 1Vp-p
Analog Audio Codec	G.711, 8 bit/8kHz, 64 kBit/s, unidirectional

NETWORK

Network 1	GigE port for connection to corporate network
Network 2	GigE port for connection to camera network
Security	Password protection, IP address filtering, connection management, HTTPS encryption (except video)
Interface	10/100/1000Base-T Ethernet (2 x RJ-45)

SYSTEMS / NETWORK MANAGEMENT

Bandwidth Throttle	Yes (can include exceptions on a per-IP address basis)
Bandwidth Scheduling	Yes
Adaptive Bandwidth	Yes
Remote Connection	TCP/IP (IPv4)
Concurrent Remote Connections	No set limit
Internal Battery	Short-term power conditioning

SOFTWARE

Video Management	
Command Enterprise	All-in-one, browser-based thin client (Firefox, Internet Explorer, Safari, Chrome)
Visual Intelligence	Thick client suite (Admin Console, Investigator, Evidence Manager, Live Monitoring Console, Evidence Reviewer)
Analytics	
Included	Motion Detection
Optional	Camera obstruction, field-of-view monitoring, trip wire, loitering

STORAGE

Internal Hard Drives	1-4 3.5" HDDs
Individual Drive Capacity	2TB or 3TB
Total Storage Capacity	Up to 12TB
Drive Type	Serial ATA (SATA)
Mirroring	Yes

ALARM INPUTS/OUTPUTS

Alarm Inputs	8 current loop inputs, supporting open and closed detection
Relay Outputs	4 relay switch outputs (30VDC, 1A); programmable event driven

PHYSICAL

Dimensions (HxWxD)	
R-series	3.1 x 17.4 x 16.0 in (8.0 x 44.2 x 40.6 cm)
S-series	3.2 x 16.9 x 16.0 in (8.1 x 43.0 x 40.6 cm)
Mounting	
R-series	2U high, 19" rack, wall mount and desktop
S-series	Wall mount and desktop
Weight	
R-series	18.5 lbs (8.4 Kg) (with docking station)
S-series	13 lbs (5.9 Kg) (no docking station)
Hard Drive	Add 1.5 lbs (0.7 Kg) per HDD

ENVIRONMENTAL

Operating Temperature	5°C to 40°C (41°F to 105°F)
Heat Dissipation	Maximum 255 BTU per hour (system plus 4 hard drives)
Humidity	5% to 95% RH (non-condensing)
Storage Conditions	-40°C to 70°C (-40°F to 158°F)

ELECTRICAL

Internal Power Supply	115/230 VAC (auto-sensing), 2.3A, 50-60Hz
Power Consumption	75W Max

REGULATORY

Safety	UL/CSA 60950-1 2nd edition; EN60950-1 2nd edition
EMC	FCC Part 15 Class A; ICES-003 Class A; EN55022/AS/NZS CISPR 22 Class A; EN55024, EN50130-4; EN61000-3-2; EN61000-3-3
Compliance Marking	CE, FCC, cULus, Ctick, ROHS; WEEE

NOTES: ¹ For 32-channel models: up to 16 analog; up to 16 IP; or up to 32 IP if analog inputs are disabled.

North America 1 800 563 5564
 Latin America +1 613 591 8181
 Europe +39 0362 17935
 Asia, Hong Kong +852 2795 6540
 Asia Pacific +61 1300 089 419
 Middle East and Africa +971 4 326 5911

© 2013. March Networks, An Infinova Company. All rights reserved. Information in this document is subject to change without notice. MARCH NETWORKS, March Networks Command, March Networks Searchlight, Shadow Archive and the MARCH NETWORKS logo are trademarks of March Networks Corporation. Infinova is a trademark of Infinova Corporation. All other trademarks are the property of their respective owners. 060-3159-00-A marchnetworks.com

