

LOCK SET-UP INSTRUCTIONS**ALL LOCKS ARE SHIPPED FROM THE FACTORY IN PRE SET-UP MODE
WITH NO FEATURES INSTALLED.**

In this mode, pressing key "1" activates solenoid, silent alarm and test remote input. Key "0" sends power-up prompt (request for PC Setup software). Other keys beep once.

The ComboGard Pro setup software is the configuration software developed for the ComboGard Pro lock. The setup software allows the operator to assign codes, select the mode of operation and configure other parameters, then upload these settings to the lock via the serial interface connection.

System requirements: Windows 95 or later, at least 6MB hard drive space and a COM port connection. The lock can also be configured at the keypad.

LOCK FEATURES**Programmable Code Length**

- From 6 to 9 digits in length

Manager Code

- Activate/Delete Users
- Enable/Disable Users
- Set Time Delay Values
- Print Audit
- Setup Configuration
- Open Lock

User Code (Up to 9 Users)

- Open Lock
- Change Code

Time Delay

- Delay period 1 - 99 minutes
- Open period 1 - 19 minutes

Time Delay Override

- User #9 Overrides Time Delay and Opens (*If set-up*)

Dual Code

- Two codes required to open

Signal to Disable Lock Opening (*Optional Alarm Box Required*)

- Input signal disables opening of lock by valid code

Signal to Disable Lock (*Optional Alarm Box Required*)

- Input signal disables all lock functions by valid code

Silent Signal Alarm (*Optional Alarm Box Required*)

- Duress signal if last number of code(s) is entered using one number higher or one number lower.

Wrong Try Penalty

- Four (4) consecutive invalid codes initiates five minute delay period.

Low Battery Warning

- Repeated audio and visual signal (LED flashing and repeated beeping) during opening indicates battery low.

Audio and Visual Signal

- Double signal (LED flashes and unit beeps) indicates entry is valid or accepted.
- Triple signal indicates invalid or not accepted.

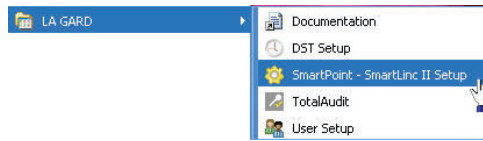
Audit Trail

- On board non volatile memory records up to 63 last events, including user ID and action.
- Audit file is sent to serial interface at each power-up and upon request of manager, using special function #7.
- Audit file can not be deleted.

SETUP CONFIGURATION (Via PC Software)

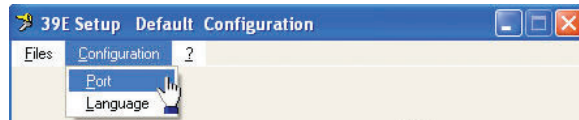
ComboGard Pro locks may be set-up either via PC software or via the keypad.

Once all of the software has been installed on the computer, it is time to begin setting up the lock. Using either Windows Explorer or the START button, find the LA GARD folder on the hard drive. Within the LA GARD folder there is a file labeled 39E (see screen 1). Click on the icon to open the program.



Screen 1

Once program has launched, select Port from the Configuration menu (see screen 2). Enter serial port to use when communicating with lock. You need to do this once only.



Screen 2

In the default window select the features to be enabled on the lock (see screen 3).

Mode

- The lock can be set for the Duress alarm feature. This requires the use of a battery alarm box with an outside alarm company hook-up.
- If Dual Code is installed, 2 users must be set-up prior to checking this box (see screen 4). If installed, two codes will be required to open the lock.
- The lock may be set with the Time Delay Override feature. This will allow Users enabled with Time Delay Override to override the Time Delay period in order to access the safe.

External Signal

Remote Override and Disable Opening are exclusive features; only one can be selected.

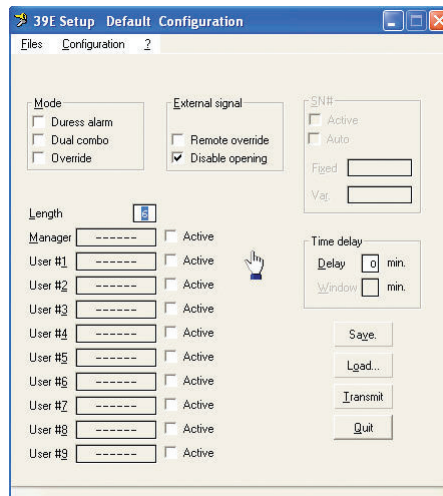
- If selected, Remote Override allows the lock to be shutdown via a signal through the alarm box.
- By checking the Disable Opening box, a signal via the alarm box will set the lock to not open even if a valid code is entered.

Codes

- By placing a check mark in the Active box next to the Manager or User, this Manager or User will be available via the keypad (see screen 5). User can be activated with or without code. Users not activated are blocked and will not be available via the keypad.

Time Delay

- Time Delay open window and delay times may be set-up in this window or via the keypad.
- Once all of the features for this lock have been selected, save and name the set-up to a file for later use. If a file has already been saved, it may be opened from this window as well.
- Time delay value set to 0 will disable it.



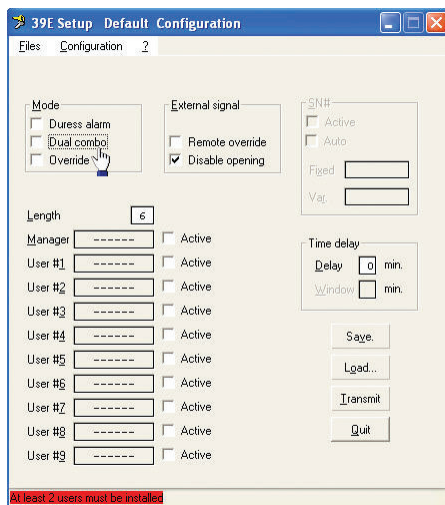
Screen 3

SENDING SET-UP TO THE LOCK

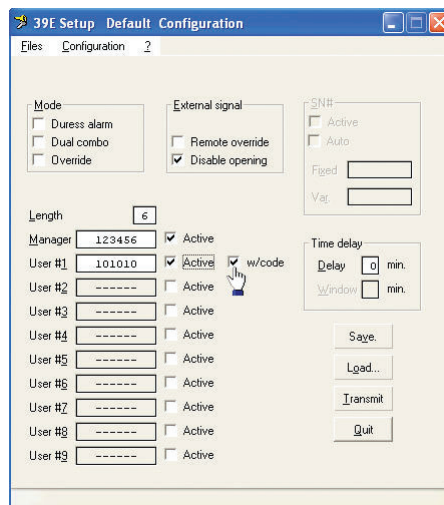
This function requires the use of the Audit Cable with Interface (P/N 43087).

1. Connect Keypad to the lock via the port on the lock marked ENT.
2. Connect power to the lock via the keypad (9-Volt), AC Power Adapter or small/large battery box through the port on the lock marked BAT. LA GARD recommends the use of quality Energizer e2 Titanium or Duracell Ultra 9-Volt Alkaline batteries.
3. Plug Interface and cable into PC.
4. Plug the 43087 cable into the keypad through the port on the side of the housing.
5. Press the TRANSMIT button on the software.
6. Press the "0" key on the keypad to begin transmission (*see screen 6*).
 - If the COM port has been incorrectly set, Hit "0" on the Keypad will continue to flash. Return to the setup window (*see screen 3*), and re-set the COM port to the correct one. **Note: If you do not know which COM port to use, check the computer's device manager.**
 - While transmission is in progress a message will appear on screen (*see screen 7*). Once setup is complete the screen will show "DONE" (*see screen 8*).
 - If an error occurs during transmission, an error message is displayed (*see screen 9*).
7. Wait until screen 6 reappears in the programming window. PRESS and HOLD "0" key until the lock signals twice, to confirm setup and activate lock in the configured mode.
8. Repeat steps 3 - 7 for each lock to be programmed with this configuration.

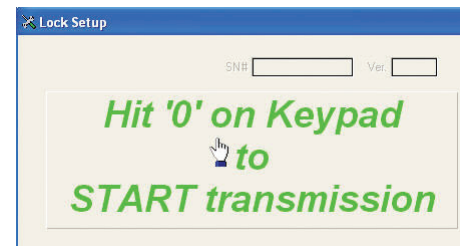
NOTE: If the computer does not have a serial port, a serial to USB adapter will be required.



Screen 4



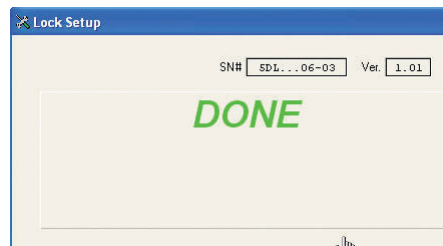
Screen 5



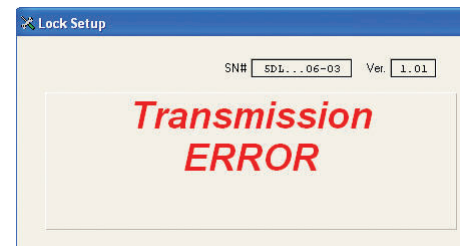
Screen 6



Screen 7



Screen 8



Screen 9

SETUP CONFIGURATION (via Keypad)

Each function below will be fully described on subsequent pages; this is a sequence of operations.

1. Exit Pre-Setup mode.
2. Select code length (manager function #8).
3. Install users (manager function #1). All users required must be installed with default codes, uninstalled users will not be available after manager changes their code.
4. Select additional features (manager function #8). Enter "0" as code length to not modify it. Choose optional features.
5. Freeze configuration (manager function #0). Manager changes their code to freeze configuration.

Lock is now fully operational.

EXIT PRE-SETUP (via Keypad)

1. Press and hold the "0" key until unit double signals.
2. Enter the default Manager Code, 5-5-5-5-5.
 - Unit will signal twice and lock will open.

Lock is now in setup and test mode.

SET CODE LENGTH (via Keypad)

1. Enter default Manager Code (5-5-5-5-5) and hold down last digit of code until unit double signals twice and the LED stays on.
2. PRESS 8. Unit signals twice.
3. Select code length (6, 7, 8, or 9). Unit signals once.
4. Press 0. Unit signals twice.
5. Enter code length a second time and press 0 to confirm.
6. Enter default Manager Code (All 5's to length of code), unit will signal twice and lock will open.

Example: Code length 9 digits: Enter "5-5-5-5-5 hold last digit", enter "8", enter "9,0" double beep; enter "9,0" double beep code new length is now set. To test enter "5-5-5-5-5-5-5-5-5" lock opens.

Note: If code length is changed after Users are enrolled, all Users will be deleted and must be re-enrolled.

ACTIVATING USERS (via Keypad)

1. Enter Default Manager Code (All 5's to length of code) and hold down last digit of code until unit double signals twice and the LED stays on.
2. PRESS 1. Unit signals twice.
3. Select User ID, 1 to 9. Unit signals twice.
4. Enter New User Code; re-enter New User Code to confirm.
5. If a mistake is made wait thirty (30) seconds and repeat steps 1 - 4.
6. Repeat above step for each User.
 - **Valid Code Entry** - Double signal after valid code is entered.
 - **Invalid Code Entry** - Triple signal and old code is still valid.

**Note: If a User is not enrolled during setup, the User is blocked and can not be added later.*
New codes are rejected when less than 2 digits are different from existing codes.**

**User 9 can be enabled by the Manager as time-delay override during Lock Feature Set-Up.*

SET LOCK FEATURES (via Keypad)

1. Enter default Manager Code (All 5's to length of code) and hold down last digit of code until unit double signals twice and the LED stays on.
2. PRESS 8. Unit signals twice.
3. Enter "0" (this maintains current code length value). Unit signals once.
4. Enter desired lock operation mode from chart below. Unit signals twice.
5. Enter "0" and desired lock operation mode from chart below again to confirm.

Example: If code length is 9 digits and features desired are Time Delay override and Dual Code: Enter: 5-5-5-5-5-5-5-5-5. Hold the last digit until lock signals twice and the LED stays ON. Enter "8", enter "0, 3" double beep; enter "0, 3" double beep. Lock configuration complete.

Note: Dual code can not be selected if an additional User has not been enrolled.

MODE	TIME DELAY OVERRIDE	DUAL CODE	SILENT ALARM
0			
1	✓		
2		✓	
3	✓	✓	
4			✓
5	✓		✓
6		✓	✓
7	✓	✓	✓

SET TIME DELAY VALUES (via Keypad)*

1. Enter default Manager Code (All 5's to length of code) and hold down last digit of code until unit double signals twice and the LED stays on.
2. PRESS 9. Unit signals twice.
3. Enter Delay period value, from 00 to 99 minutes.
 - For example five (5) minutes would be entered by pressing the 0 key and then the 5 key.
4. Enter Open period value, from 00 to 19 minutes.
 - For example two (2) minutes would be entered by pressing the 0 key and then the 2 key.
5. Enter all four values again to confirm. Unit signals twice and feature is active.

NOTE: If Time Delay is active it may only be deactivated or delay value decreased in Open Period. Selecting 0000 minutes deactivates the Time Delay Feature.

**This feature is active in either setup or operation mode.*

CHANGING MANAGER CODE

1. Enter default Manager Code (All 5's to length of code) and hold down last digit of code until unit double signals twice and the LED stays on.
2. Press the "0" key.
3. Enter your NEW Manager Code; re-enter new code to confirm.
4. If a mistake is made wait thirty (30) seconds and repeat steps 1 - 3.
5. Test unit operation several times before closing the door.
 - **Valid Code Entry** - Double signal after valid code is entered.
 - **Invalid Code Entry** - Triple signal and old code is still valid.

NOTE: Once the manager changes his or her code, the configuration will be frozen (Special Function #8 is no longer available). Un-enrolled Users are blocked, and can no longer be installed.

FACTORY RESET PROCEDURE

1. Remove battery.
2. Hold down key "0" for at least 10 seconds to discharge all internal capacitors. Connect Reset Box (P/N 6066) to BAT port on Lock.
3. PRESS the "1" key - if lock opens, factory reset is completed.
5. Disconnect Reset Box.

Lock configuration is now in Pre-set mode:

Lock ready to be configured either by the PC Software or the Manager via the Keypad.