



98RH GATE ROLLER SHAFT REPLACEMENT UPGRADE INSTRUCTION SHEET

Instructions for converting an early model 98RH Gate Roller Shaft to the larger ½" Gate Roller Shaft.

KIT PART #B10373

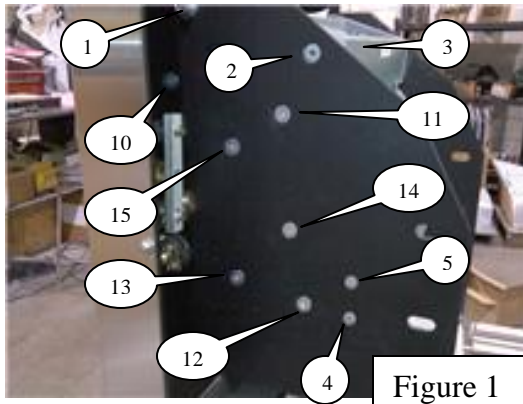


Figure 1

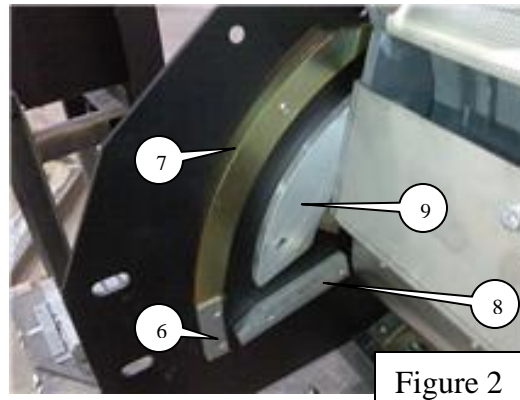
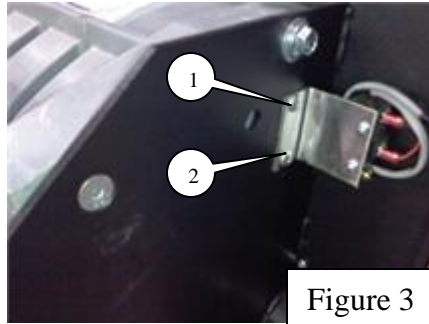


Figure 2

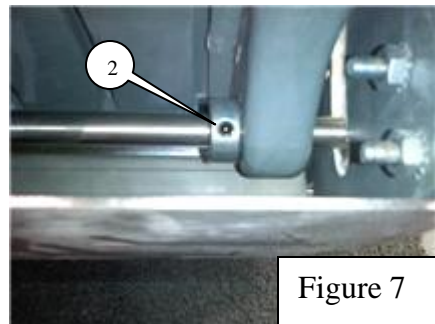
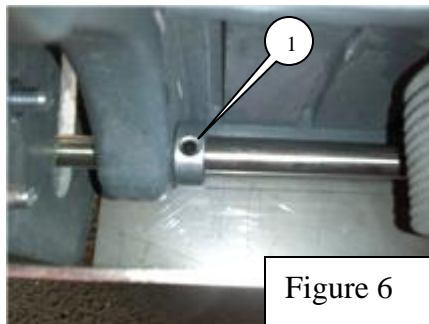
1. Remove bolts #1 and #2 both sides (figure 1), keep for reassembly
2. Remove Top Casting, #3 (figure 1), keep for reassembly
3. Remove Gate Guide #6 (figure 2) by removing bolts #4 and #5 (figure 1), keep for reassembly
4. Remove Outer Gate Guide #7 (figure 2) by removing bolts #10 and #11 (figure 1) keep for reassembly
5. Remove Roller Cam #8 (figure 2) by removing bolts #12 and #13 (figure 1) keep for reassembly
6. Remove Detent Assembly #9 (figure 2) by removing bolts #14 and #15 (figure 1) keep for reassembly



7. Remove Switch Bracket by removing screws #1 and #2, (figure 3) keep for reassembly



8. Remove Screws and axle retainers both sides (figure 4, figure 5) keep for reassembly
9. Remove Axle Pins (**CAUTION: BUCKET WILL DROP INTO HOUSING**) (figure 4, figure 5)
10. Remove Bucket from housing



11. Loosen Gate Roller Shaft Collar Set Screws #1,#2 (figure 6,7)
12. Slide Shaft out through side of bucket, remove collars

13. Use ½" Drill bit to Drill through Ejector Casting (figure 8,9)

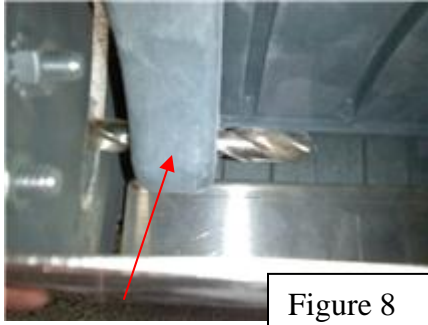


Figure 8

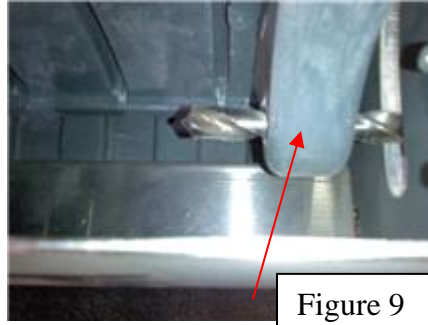


Figure 9

14. Re-Assemble with New ½" Gate Roller Shaft and Collars
15. Re-Install Bucket into Frame using shims, pins, retainers and screws that came out.

KIT PART #B10373 INCLUDES:

A.	B6413	98RH GATE ROLLER SHAFT	QTY 1
B.	B6414	98RH GATE ROLLER	QTY 2
C.	H1052	½" SHAFT COLLAR	QTY 2