

# HAMILTON AIR®

3143 Production Drive • Fairfield, Ohio 45014 • 513-874-3733

## Door Limit Switch Adjustment Instructions

Typical adjustment instructions for HA1000 and HA45  
customer unit and motorized teller unit door motor limit switches.

### Setting the depth:

The limit switches for both door open and close positions should be set so the switches activate when the switch roller drops approximately half the depth of the cam valley. Bend the switch arm up or down to set the activating depth of each switch. Below, figure #1 shows the switch roller in the valley at the maximum depth and figure #2 shows the roller at the maximum height, or outer diameter of the cam.

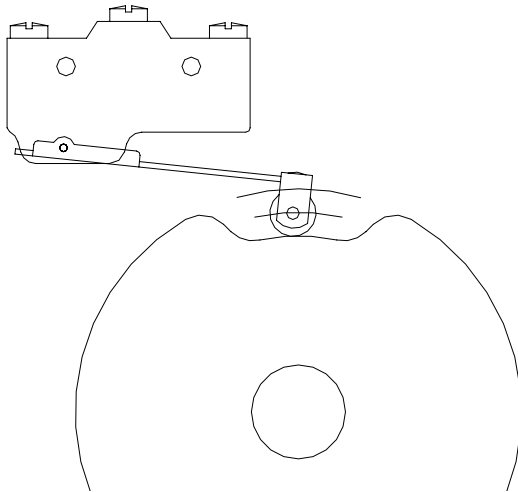


Figure #1

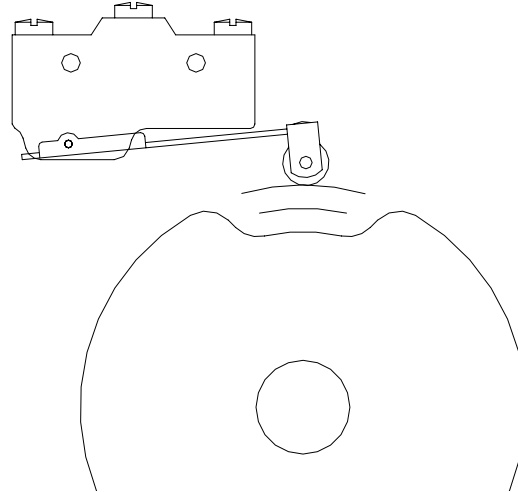


Figure #2

Figure #3 below shows the switch roller approximately mid depth of the valley where the switch should activate. There should be an audible click from the switch when it activates and deactivates.

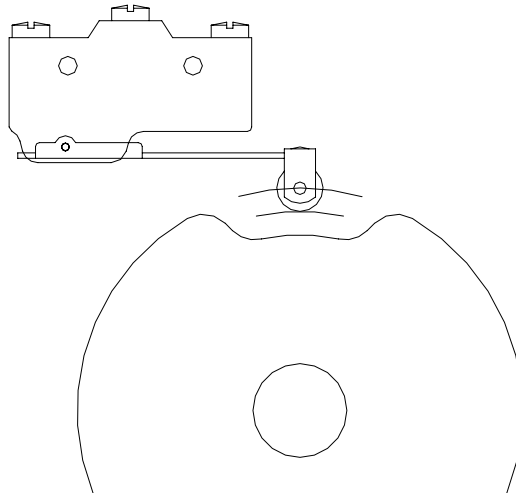
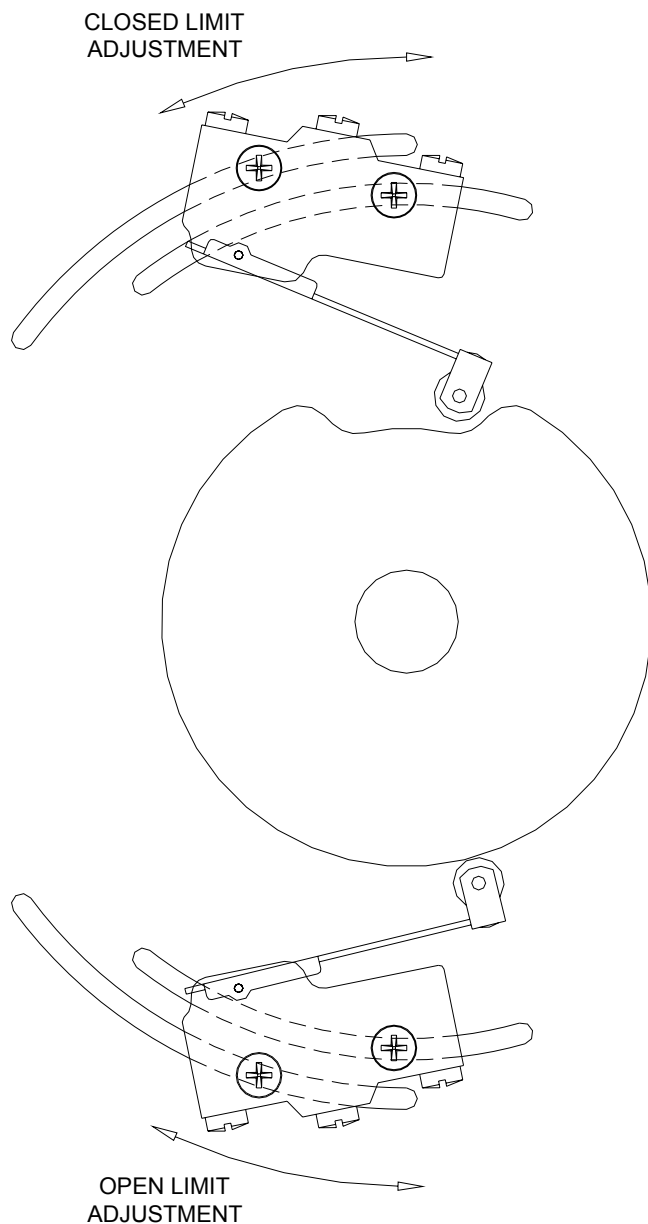
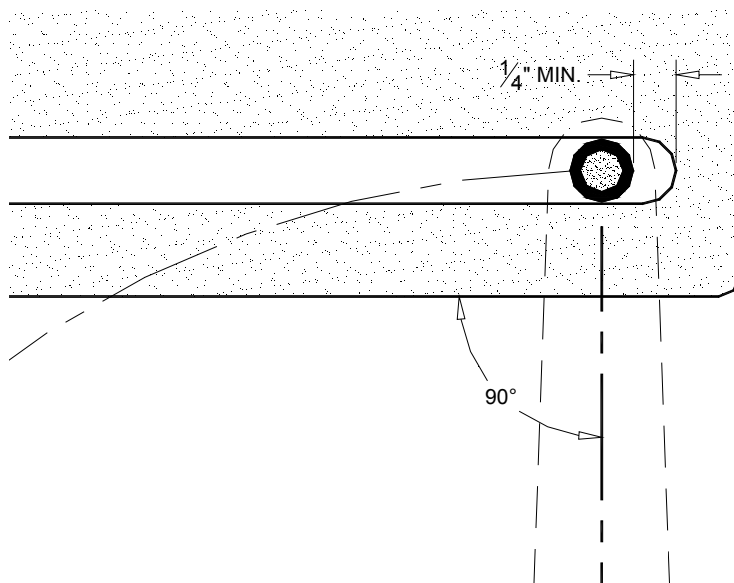


Figure #3

Note: Do not set the switch where the activation is too close to the bottom of the valley or the outer diameter of the cam. This can cause intermittent failures of the switches as the activation point within the switch can fluctuate slightly in varying temperatures. Setting the limit switches to mid depth will allow for these variations without failure.

### Setting the stopping point:

The door crank arm should pivot and stop with the crank arm vertical or straight up and down. The bushing on the end of the crank arm riding in the slot along the bottom of the door should not stop close to the end of the slot. There must be at least  $\frac{1}{4}$ " between the bushing and end of the slot when the door motor runs normally and stops with the switches. This should be set for both closed and open positions of the door.



To set stopping point of the door crank arm, adjust door limit switches by loosening the two screws holding the switch to the motor mounting plate and sliding the switch to the left or right so the door crank arm stops in the correct position as described above. This may take several trial positions of each switch to get the best setting.