

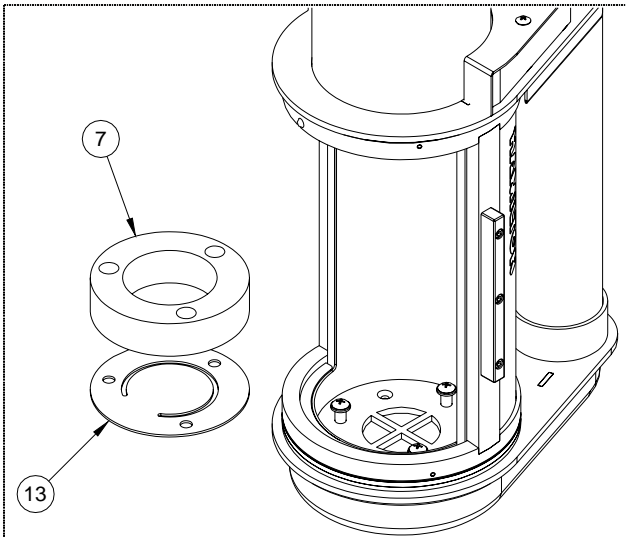
Model **HA-1000/HA45**

Overhead Teller Upgrade Kit B6672 Installation Instructions

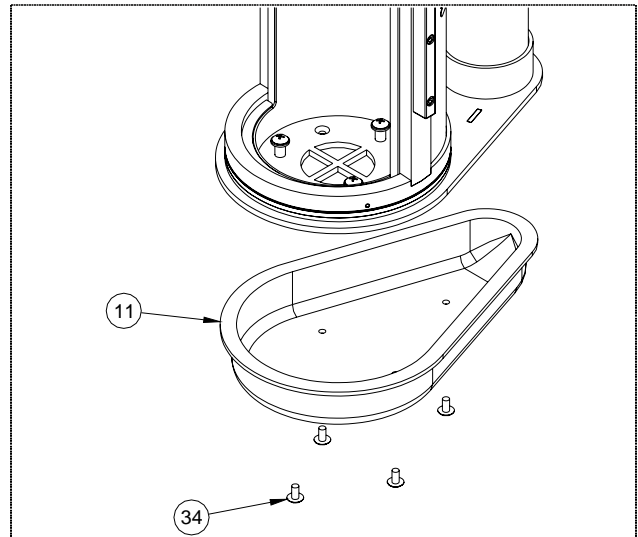
Parts List

Step #	Description	Quantity
6	10-32 x 1/4" Thick Spacer Nuts	3
7	Upper Door Ring (Aluminum)	1
8	Door Bearing (Black Plastic)	2
15	Detent Mounting Block	1
15	Spring Plunger Detent (Installed in Mounting Block)	1
15	10-32 x 3/8 Set Screw (Installed in Mounting Block)	1
15	3/32" Allen Wrench	1
15	Grease, Mini tube Lithium	1
17	Foam Strip Seal (1/4" x 9-3/4") P/N B6620	1
20	10-32 x 1/4" HHMS	2

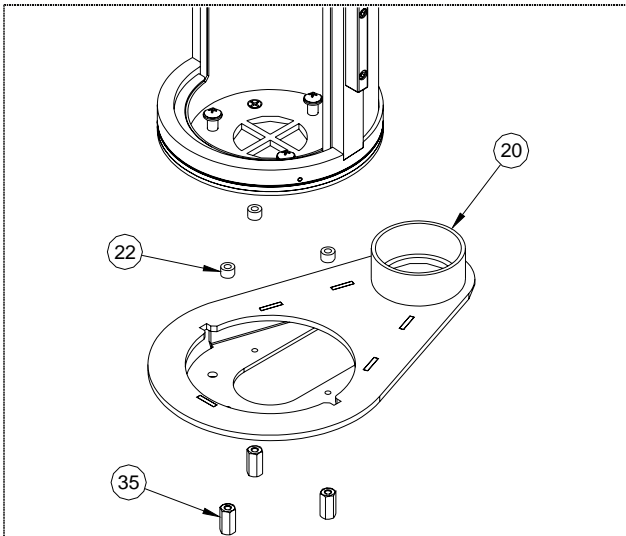
Note: Please retain all parts removed from unit and return using supplied UPS label.



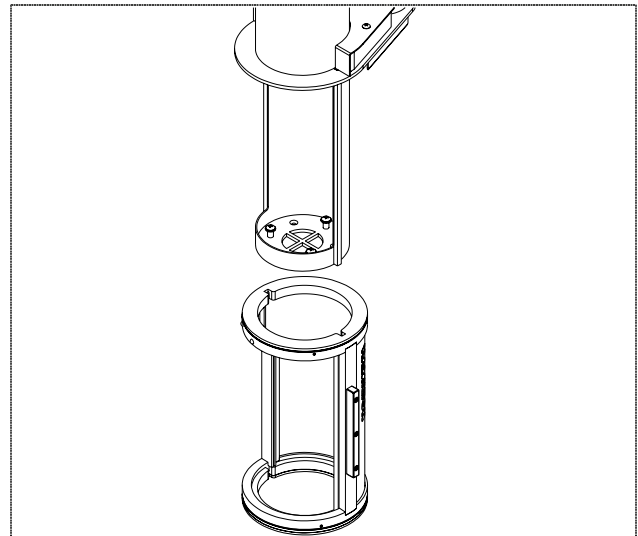
Step#1 Remove Carrier Bumper and Check Valve Gasket



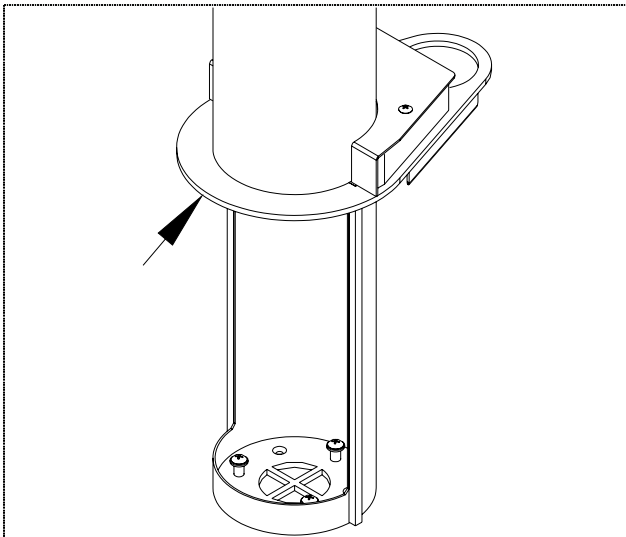
Step#2 Remove Exhaust Chamber Cover.
 Note: Cover is sealed with silicone from factory.
 Only needs re-sealed if used in Point-to-Point.



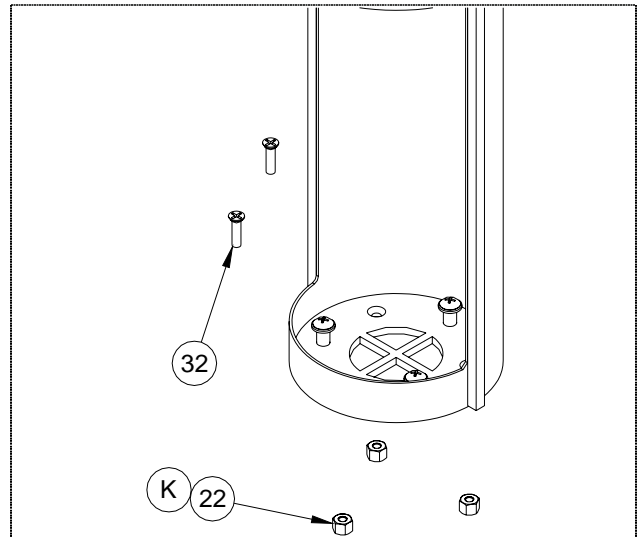
Step#3 Remove 3 Coupler Nuts holding lower frame.
 Remove Lower Frame and spacer nuts.
 Note: New Spacer Nuts Supplied in Kit.



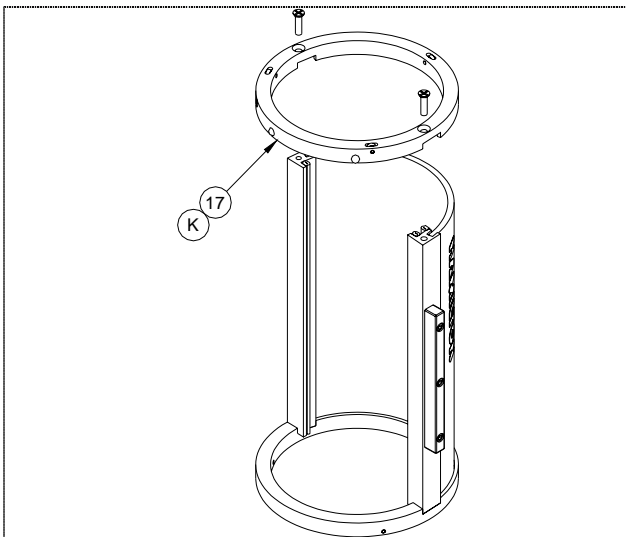
Step#4 Remove Door Assembly including ALL rings.



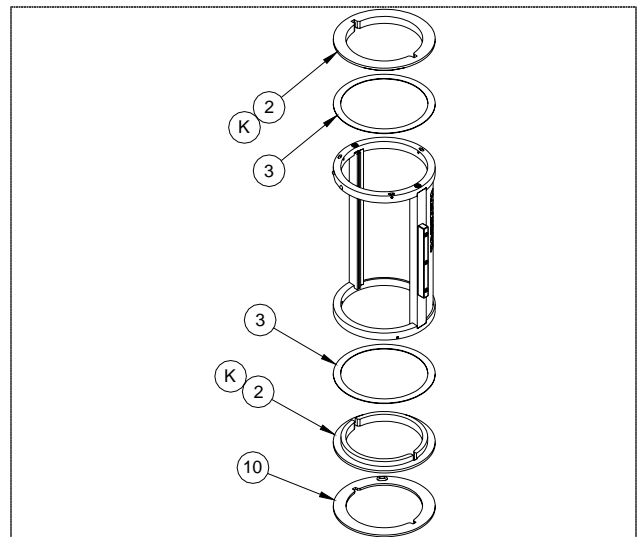
Step#5 Remove ALL silicone from tube frame. See Arrow.
 Note: This must be cleaned so that top Door Bearing rest flat under top plate.



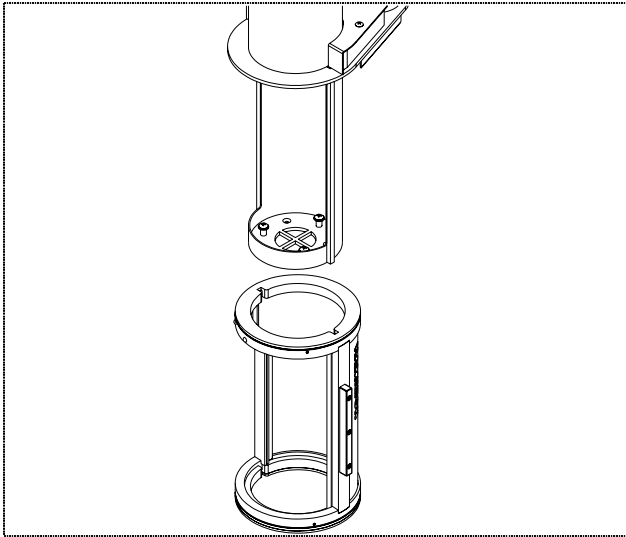
Step#6 Mount NEW spacer nuts to bottom plate using existing screws.



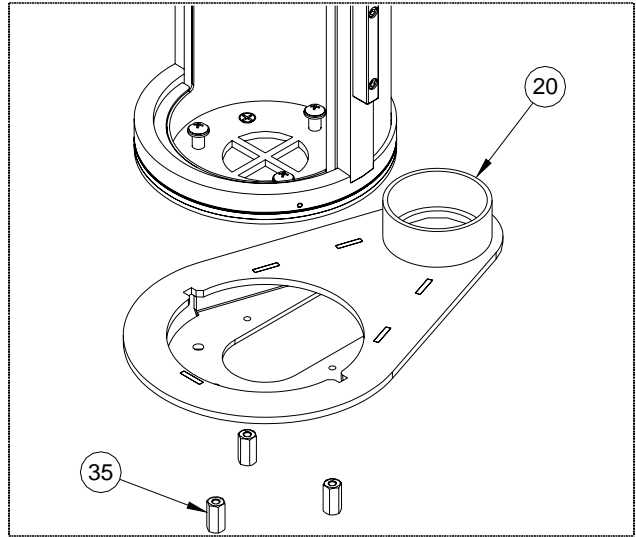
Step#7 Replace Upper Door Ring with part in kit.
 New ring has cylinder retained by screw for detent.



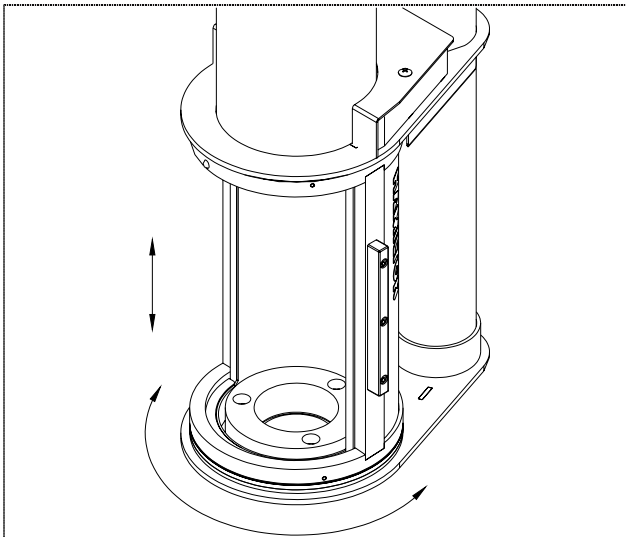
Step#8 Replace upper and lower Door Bearings with parts in kit. Note: Make sure only one Bearing Race is used on top and bottom of door.



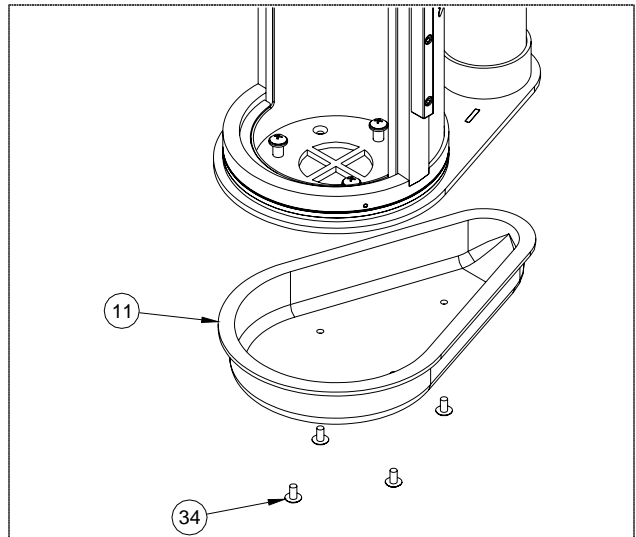
Step#9 Replace Door Assembly with ALL rings stacked as shown in step#7.



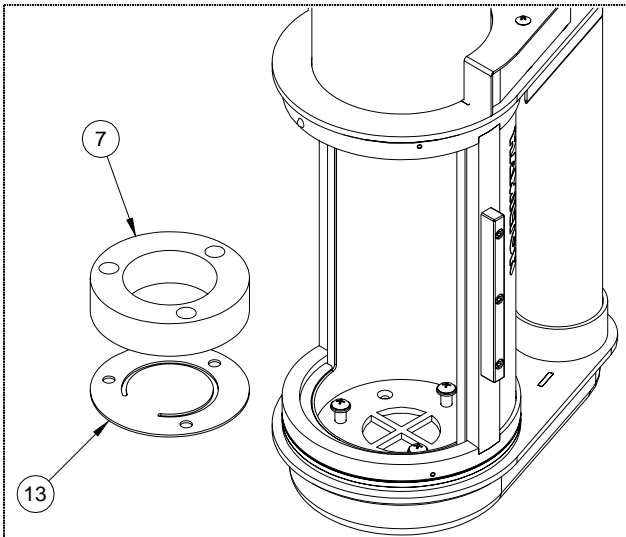
Step#10 Replace Lower Frame using existing coupler nuts.



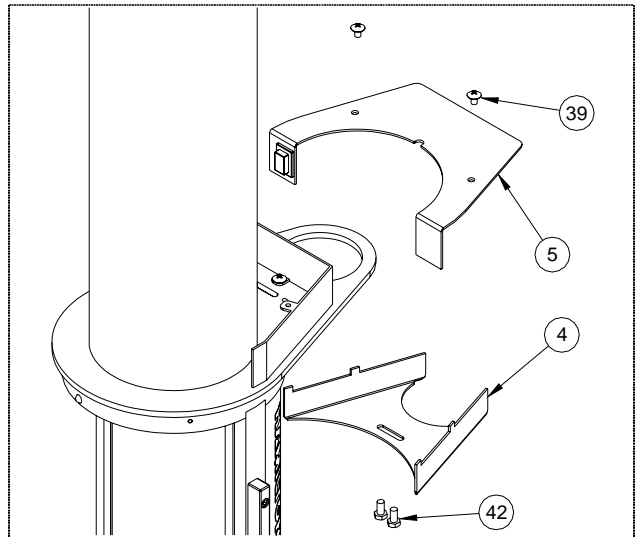
Step#11 Check rotation and vertical play of door. Shim washers may need to be added to spacers installed in step#6 to free door rotation.



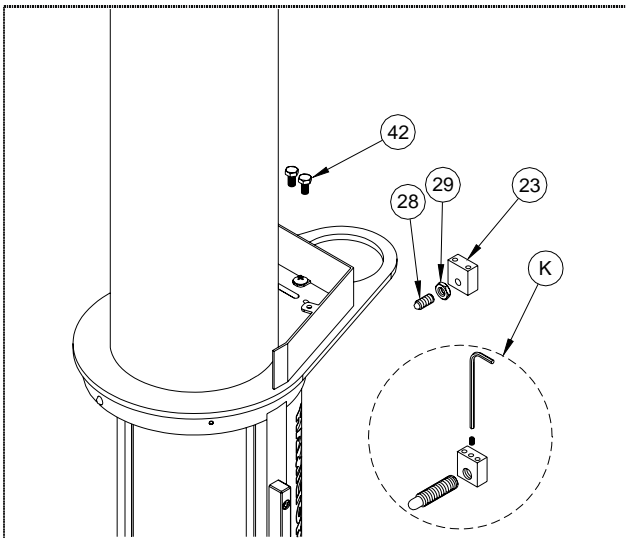
Step#12 Re-install Exhaust Chamber Cover.
Note: Cover is sealed with silicone from factory. Only needs re-sealed if used in Point-to-Point.



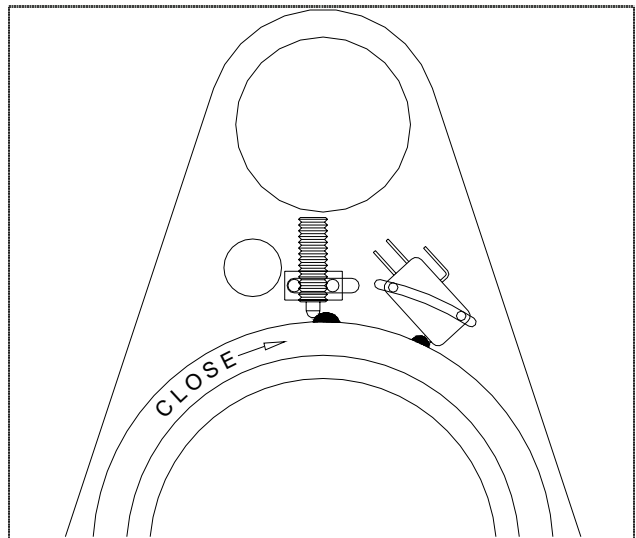
Step#13 Re-install Carrier Bumper and Check Valve Gasket



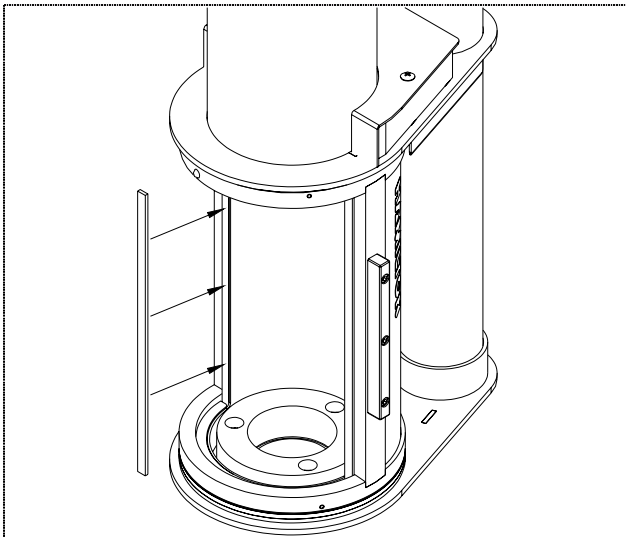
Step#14 Remove Upper and Lower Switch covers.



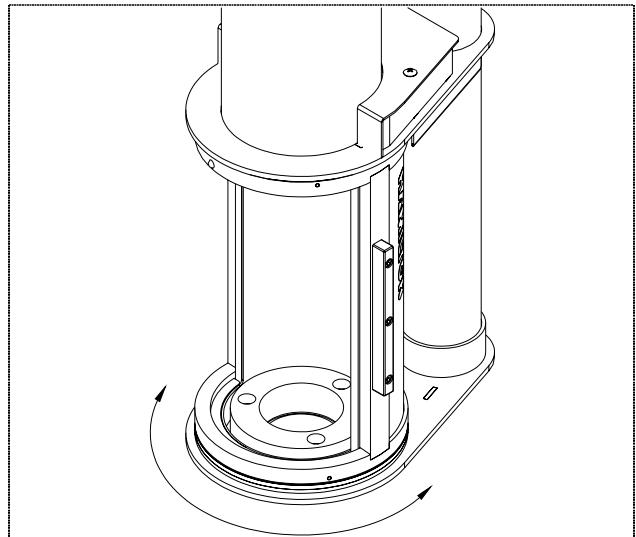
Step#15 Remove Detent Mounting Block and Ball Nose Spring Plunger. Replace with New Block and New Spring Plunger supplied in kit. Grease the Pin end of Plunger and the steel roller pressed in the aluminum Door Ring with grease supplied in kit.



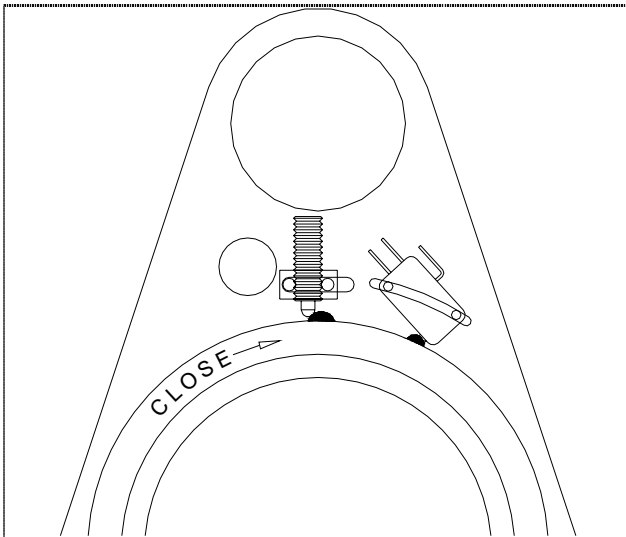
Step#16 Adjust Detent Mounting Block to the extreme Left of its mounting slot. Adjust Spring Plunger So that it does not contact aluminum door ring, only the steel roller pressed in the door ring.



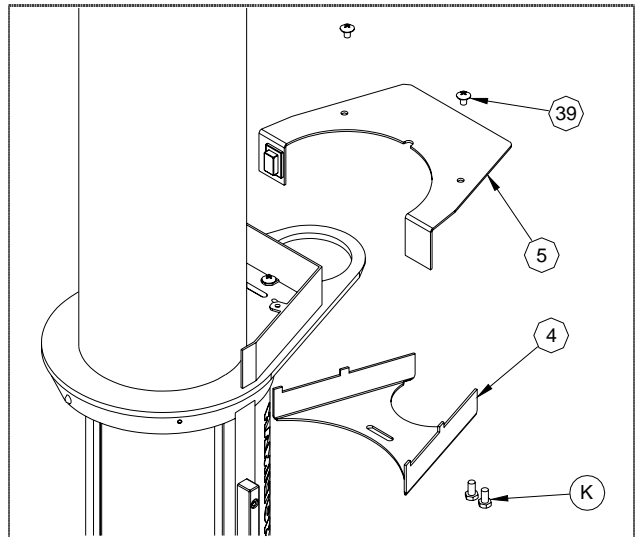
Step#17 Install foam strip to strike edge of tube opening so that door seal closes against it.



Step#18 Test door operation. Door should stay sealed tight when carrier arrives in teller. If the door seal leaks on the strike side, you can adjust the position of the Detent Mounting Block to the right.



Step#19 Adjusting Spring Plunger. 3-Ways to do so.
 1) Adjust plunger depth (In-Out)
 2) Adjust mounting block location (Left-Right)
 3) Adjust plunger spring tension (Rear Set Screw)
Note: Grease the Pin end of Plunger and the steel roller pressed in the aluminum Door Ring with grease supplied in kit.



Step#20 Re-install Upper and Lower Switch covers.
 Note: Use 10-32 x ¼ HHMS provided in kit to mount lower switch cover.