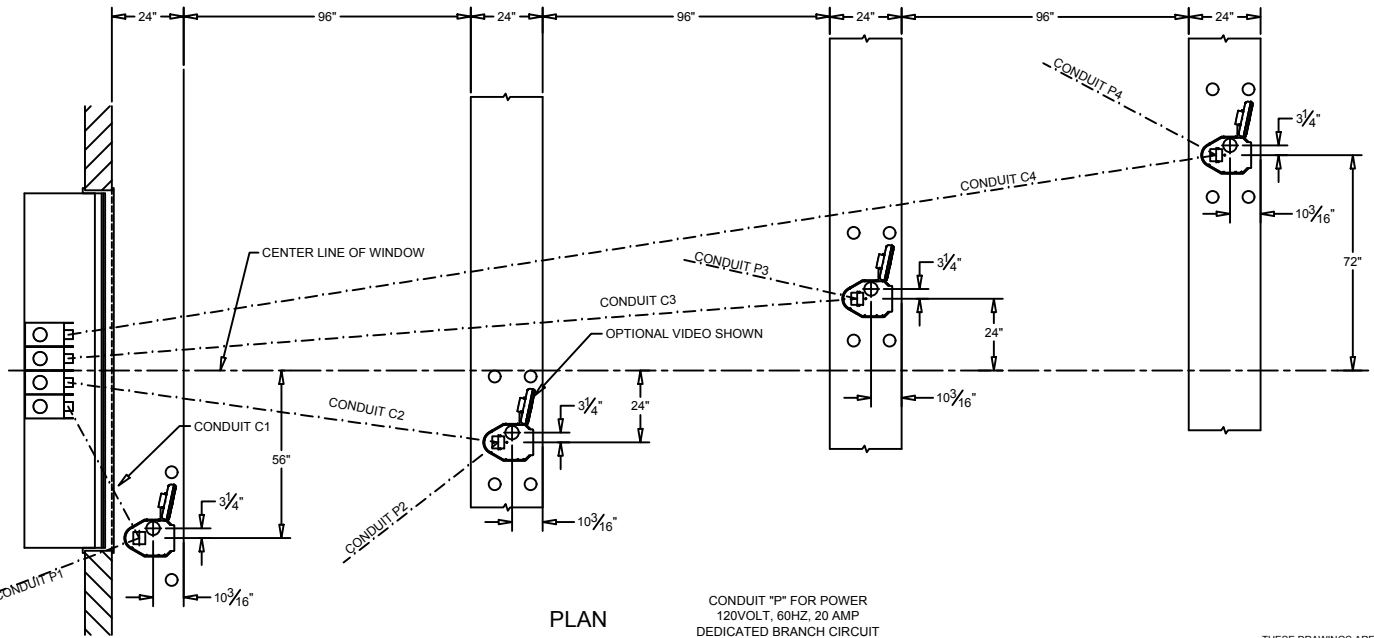
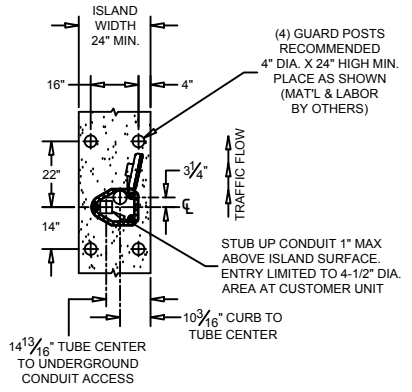


SECTION

MASONRY DETAIL  
(FOR MODEL 310V U.L. WINDOW)



PLAN



ISLAND DETAIL

NOTE: CONDUIT "P" TO BUILDING POWER PANEL  
CONDUIT "C" TO JUNCTION BOX BELOW COUNTER  
AND EXTENDED ABOVE CEILING TO TELLER AREA

CONDUIT "P" FOR POWER  
120VOLT, 60HZ, 20 AMP  
DEDICATED BRANCH CIRCUIT  
REQUIRED FOR EACH CUSTOMER UNIT.

THESE DRAWINGS ARE THE  
PROPERTY OF HAMILTON SAFE CO.  
AND SHALL NOT BE REPRODUCED  
OR COPIED OR USED AS THE BASIS  
FOR MANUFACTURE OR SALE OF  
APPARATUS WITHOUT PERMISSION

ADDITIONAL DRAWINGS TO REFERENCE:  
95-702, 99-349, & 99-1160

<b>HAMILTON AIR.</b>		
PNEUMATIC TUBE SYSTEMS MODEL HA1000-XLRD		
"402" SYSTEM - UNDERGROUND TUBING		
DATE: 1/19/2016	DRAWING NUMBER: 99-1168	REVISION: --