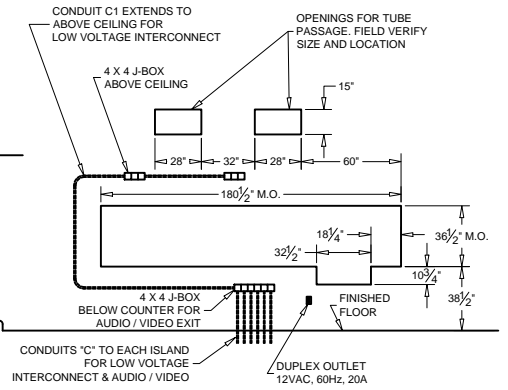
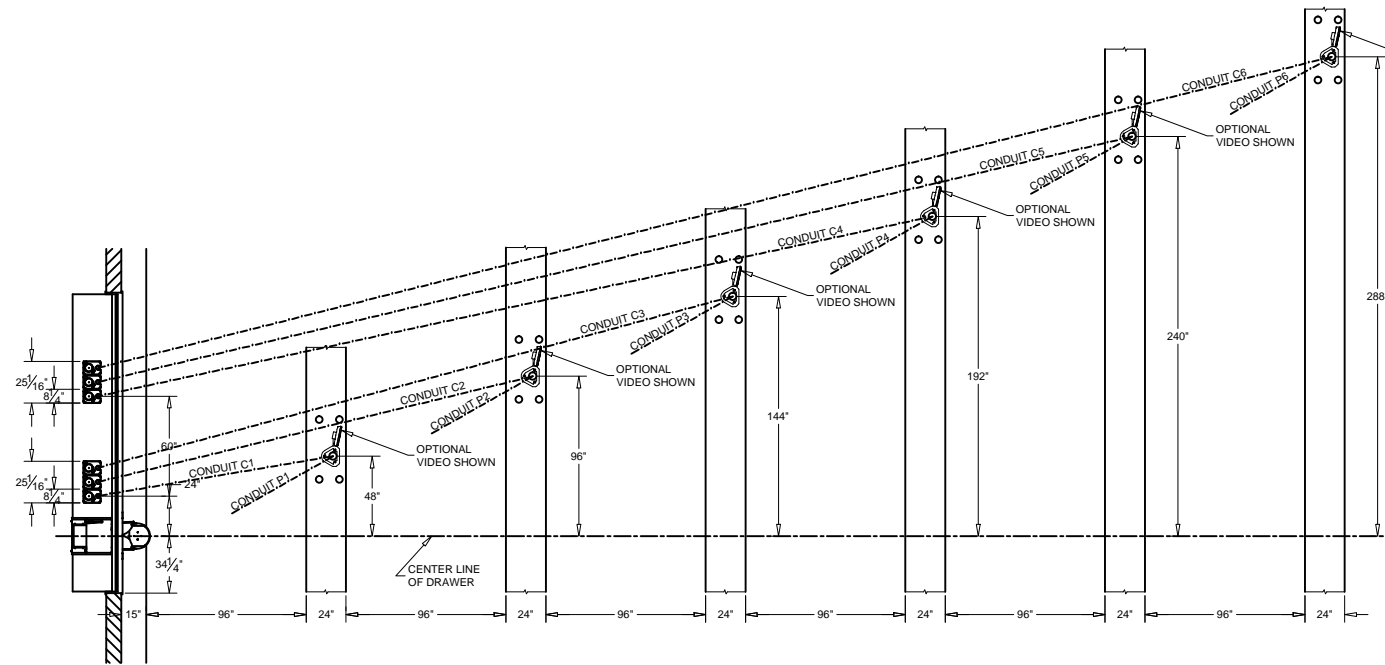


SECTION



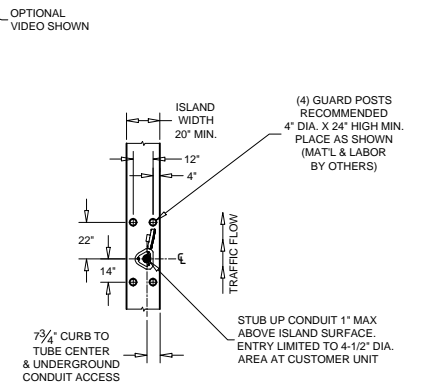
MASONRY DETAIL
(FOR MODEL 315D U.L. WINDOW)



PLAN

CONDUIT "P" FOR POWER
120VOLT, 60HZ, 20 AMP
DEDICATED BRANCH CIRCUIT
REQUIRED FOR EACH CUSTOMER UNIT.

NOTE: CONDUIT "P" TO BUILDING POWER PANEL
CONDUIT "C" TO JUNCTION BOX BELOW COUNTER
AND EXTENDED ABOVE CEILING TO TELLER AREA



ISLAND DETAIL

ADDITIONAL DRAWINGS TO REFERENCE:
95-173, 99-915, & 99-1140

HAMILTON AIR.		
PNEUMATIC TUBE SYSTEMS MODEL HA1000-XLR		
"613" SYSTEM - OVERHEAD TUBING		
DATE: 2/12/2015	DRAWING NUMBER: 99-1154	REVISION --

THESE DRAWINGS ARE THE
PROPERTY OF HAMILTON SAFE CO.
AND SHALL NOT BE REPRODUCED
OR COPIED OR USED AS THE BASIS
FOR MANUFACTURE OR SALE OF
APPARATUS WITHOUT PERMISSION