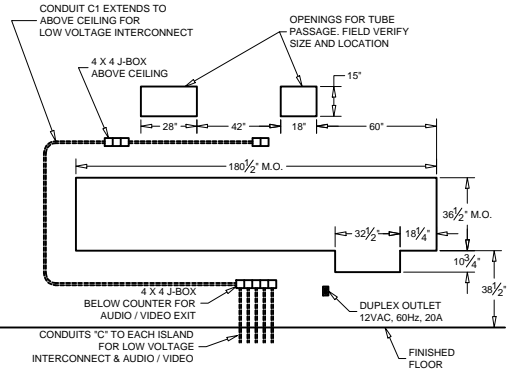
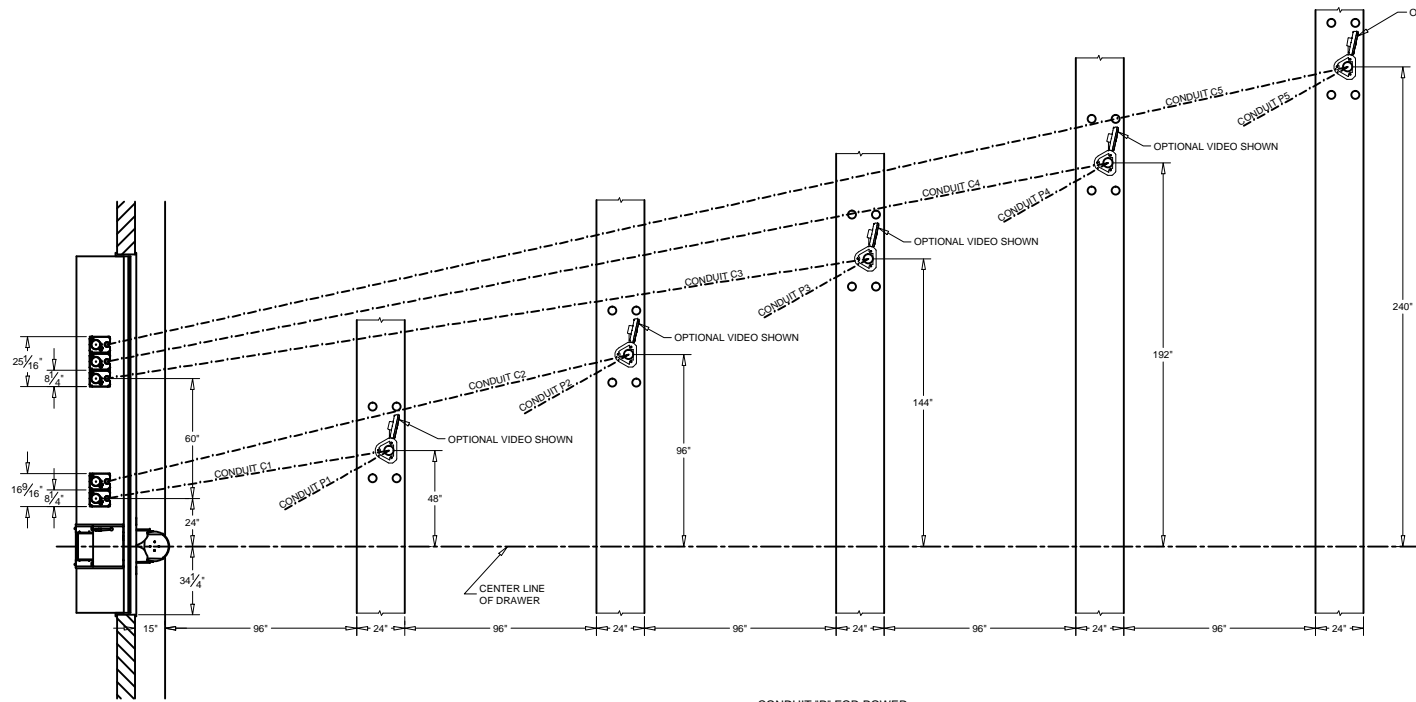


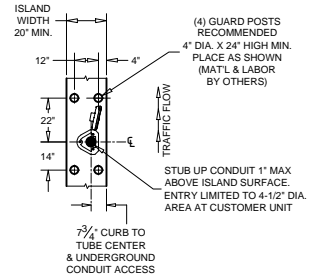
SECTION



MASONRY DETAIL
(FOR MODEL 315D U.L. WINDOW)



PLAN



ISLAND DETAIL

ADDITIONAL DRAWINGS TO REFERENCE:
95-173, 99-915, & 99-1140

NOTE: CONDUIT "P" TO BUILDING POWER PANEL
CONDUIT "C" TO JUNCTION BOX BELOW COUNTER
AND EXTENDED ABOVE CEILING TO TELLER AREA

CONDUIT "P" FOR POWER
120VOLT, 60HZ, 20 AMP
DEDICATED BRANCH CIRCUIT
REQUIRED FOR EACH CUSTOMER UNIT.

THESE DRAWINGS ARE THE
PROPERTY OF HAMILTON SAFE CO.
AND SHALL NOT BE REPRODUCED
OR COPIED OR USED AS THE BASIS
FOR MANUFACTURE OR SALE OF
APPARATUS WITHOUT PERMISSION

HAMILTON AIR		
PNEUMATIC TUBE SYSTEMS MODEL HA1000-XLR		
"513" SYSTEM - OVERHEAD TUBING		
DATE: 2/12/2015	DRAWING NUMBER: 99-1153	REVISION: --