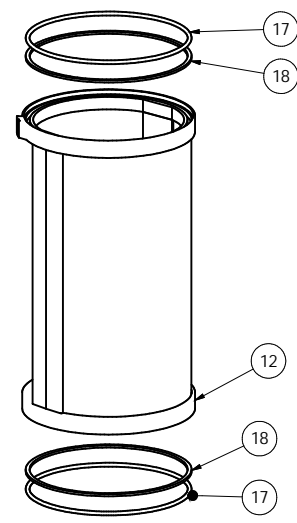


PARTS LIST			
ITEM	QTY	PART NUMBER	DESCRIPTION
3	2	B6684	Door Seal
4	1	B6690	Gasket, Spacer
5	1	B6697	Carrier Compartment Assembly
9	1	B6693	Switch Cover
10	1	B6687	Spacer, Switch
11	2	B6683	Door Stop Block
12	1	B6696	Rotating Door Assembly
13	1	B6694	Check Valve
14	1	B6695	Bumper, Carrier
17	2	B6681	Teflon O-Ring (White)
18	2	B6679	Foam Ring (Black)
26	1	E0173	Switch, Mini Lever Roller
32	1	MTK-002	Bottom Spacer Plate
33	1	MTK-003	Bottom Plate
34	1	MTK-004	Top Plate Assembly
35	6	NCA10F/N	10-32 High Crown Accorn Nut
38	2	MTK-001	Adapter, Tube
39	1	B4158	Bottom Cover Panel
40	9	H0790	#10 Flat Washer
41	2	H0789	4-40 x 1 Pan Hd Phillips
42	4	MXT10F37/Z	10-32 x 3/8 Truss Hd
43	4	MXT8C37/Z	8-32 x 3/8 Truss Hd Phillips
44	2	HCS25C75/ZZ	1/4-20 x 3/4 Hex Hd Bolt
45	3	H0791	10-32 Nylon Lock Nut
46	1	B4080	Teller Send Button
47	1	B4157	Label, Original HA1000 OHT
48	2	H0792	#6 Sheet Metal Screw
49	2	H0162	#6 Oversized Flat Washer
50	1	B2055	Teller Recall Button



THESE DRAWINGS ARE THE PROPERTY OF HAMILTON SAGE CO. AND SHALL NOT BE REPRODUCED OR COPIED OR USED AS THE BASIS FOR MANUFACTURE OR SALE OF APPARATUS WITHOUT PERMISSION

TOLERANCES UNLESS OTHERWISE NOTED:
 FRACTIONS: ± 1/64"
 DECIMALS: ± .005
 ANGLES: ± 1/2°

<h1>HAMILTON SAFE</h1>		
ITEM CODE	MATERIAL	DRAWN BY WHD
DRAWING NUMBER 99-1135-P		DATE 7/14/2015
TITLE: 99-1135 Teller Door Replacement Kit Exploded Parts Detail		
BEND ALLOWANCE	TOLERANCES UNLESS OTHERWISE NOTED: FRACTIONS: ± 1/64" DECIMALS: ± .005" ANGLES: ± 1/2°	REVISION
		SEE SIDE NOTES FOR DESCRIPTION