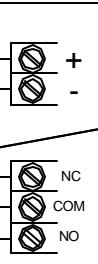




NOTE: SET PHOTOCCELL TO "DAY" SETTING FOR 24 HOUR OPERATION.

NOTE: FIELD INSTALLED JUMPER BETWEEN "COM" AND "NEG" TERMINALS

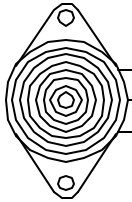


INFRARED DETECTOR #IX-402

INFRARED DETECTOR MOUNTED TO CANOPY SUPPORT COLUMN OR CANOPY CEILING CENTERED OVER BOTH DRIVE LANES.

3 CONDUCTOR 18 GA. CABLE CONNECTING CHIME/POWER SUPPLY TO THE PIR

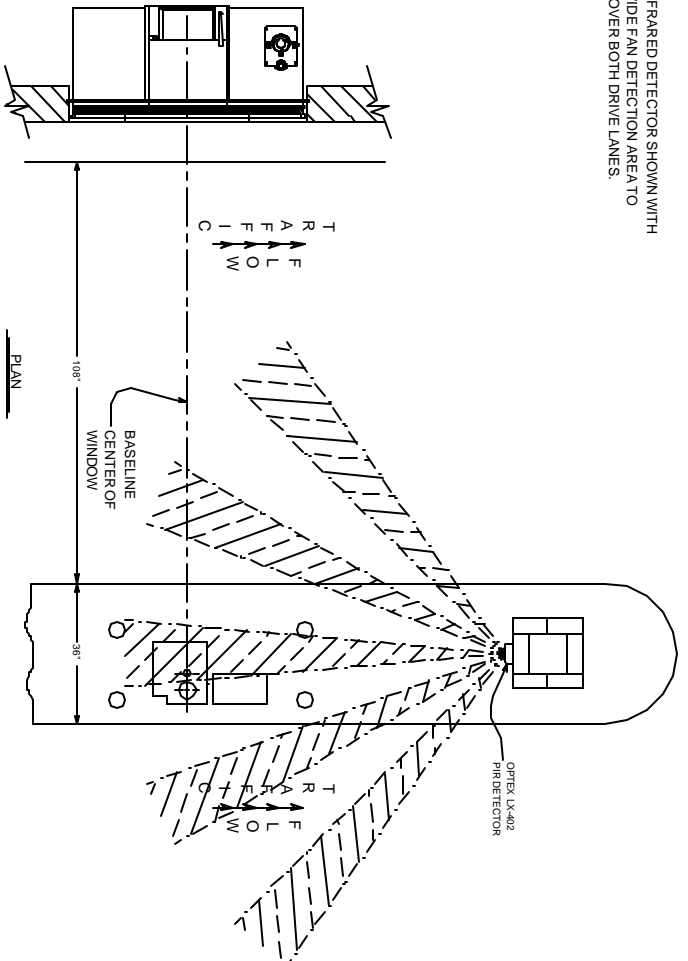
12VDC POWER SUPPLY #E0884



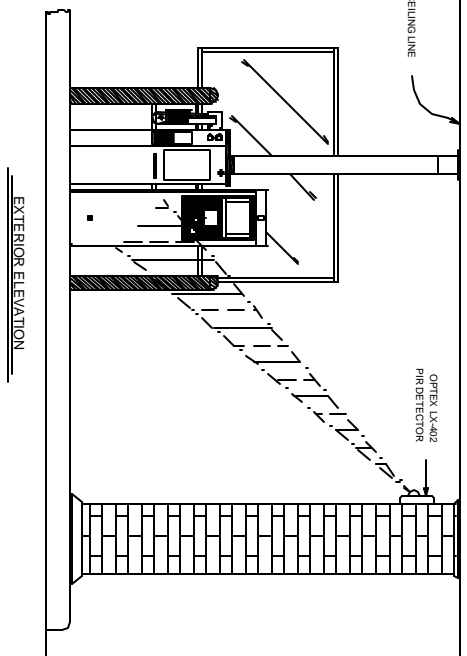
ELECTRONIC CHIME #PC-100

CHIME LOCATED UNDER COUNTER NEAR OPERATOR WORK STATION 12VDC POWER SUPPLY CONNECTED TO DUPLEX OUTLET UNDER COUNTER

INFRARED DETECTOR SHOWN WITH WIDE FAN DETECTION AREA TO COVER BOTH DRIVE LANES.



INFRARED DETECTOR MOUNTED TO CANOPY SUPPORT COLUMN OR CANOPY CEILING CENTERED OVER BOTH DRIVE LANES.



EXTERIOR ELEVATION

HAMILTON AIR	
KROGER PHARMACY DRIVE-UP PIR VEHICLE DETECTION SENSOR AND CHIME DETAILS	
Drawing Number :	93-1049
Date :	10/16/2009