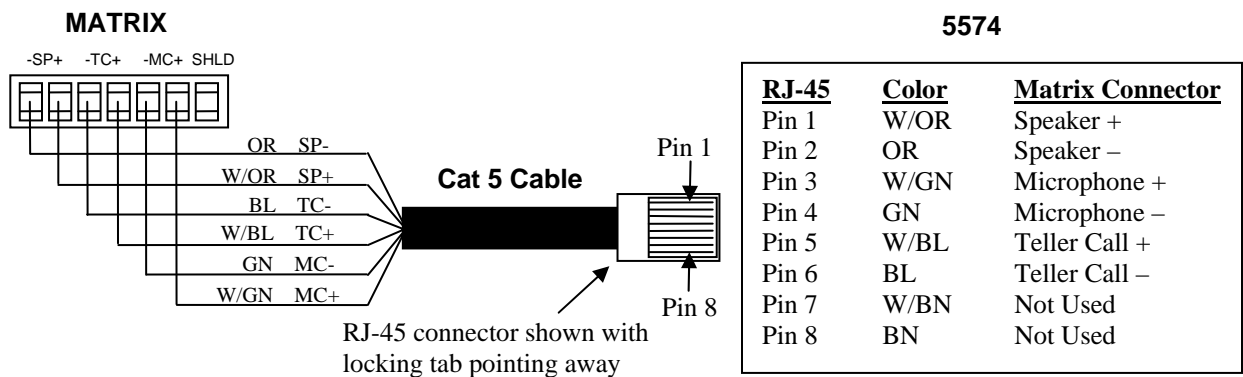


Remote Customer “In Wall” Audio/Video Unit (5574)

DESCRIPTION: The Remote Customer “In Wall” Audio/Video Unit consists of a speaker, microphone and call button along with a camera in a recess mount triple gang electrical box for indoor applications. The model 5574 is intended for use with Cat 5 audio cable. Standard RG-59 coax cable can be used for the camera. It is also possible to use twisted pair cable for the camera by using video baluns (not included). See the documentation for your video baluns for cable requirements if you decide to use that option. *DO NOT try to use the spare wire pair from the Cat 5 audio cable for the camera as interference will result.* A power supply is included with the 5574 and requires a 110VAC outlet near the remote location.

COMPATIBILITY: The Remote Customer “In Wall” Audio/Video Unit should only be used in systems that have 5501 or newer 5001 (rev. 5 or 3.1) teller consoles. Also feature switch #7 on the audio matrix must be set to the UP position (dynamic echo canceller learning). Keep the speaker and mic gain settings on the matrix to the lowest level which will still allow adequate audio. Avoid using 4001, 4101 or 3001 teller consoles which will result in excessive teller echo.

INSTALLATION: Remove the front plastic bezel from the unit by pressing the two plastic tabs on the bottom with a screwdriver. Disconnect the wires from the call button and set the bezel aside. Next remove four philips head screws and remove the audio assembly from the electrical box. Also unplug the power cord from the audio assembly to the camera. The camera should not need to be removed. Determine the mounting location and cut an opening in the wall for the triple gang electrical box. Fish the audio, video and power cables in the wall and through the cable slots in the rear of the box. (It is recommended to use the cable slots on the left side where the camera is because of space constrictions.) *The power supply must be in the vicinity of the 5574 so do not extend the power supply cable any more than necessary.* Mount the electrical box in the wall by tightening the two screws which pull the mounting tabs against the rear of the wall. Terminate an RJ-45 connector on the Cat 5 audio cable per the drawing below. Also install a BNC connector on the coax cable.



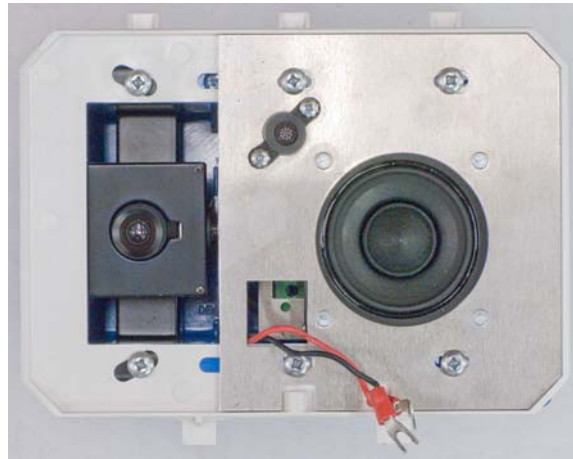
Attach the Cat 5 audio cable to the connector on the audio driver board, attach the coax cable to the camera pigtail and plug the power supply cable into the audio driver board. Install the audio assembly in the electrical box using the philips head screws. Make sure the rear plastic part of the bezel is in place. Power up the 5574 and view the camera image on a monitor. Tilt the camera in it’s bracket for the proper view. Attach the leads to the call button and then snap the front bezel into place.



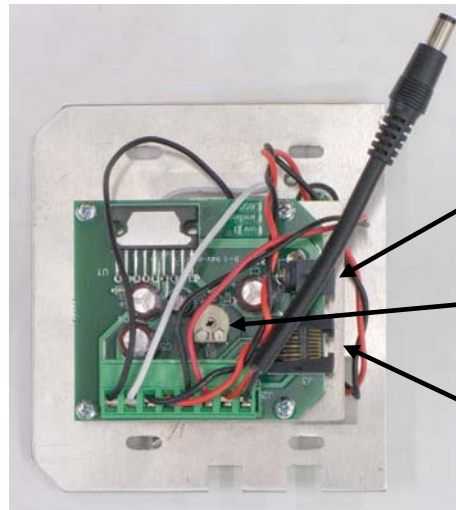
Front of 5574



Side View Showing Electrical Box



Front with Bezel Removed



Rear of 5574 Audio Assembly

12VDC Power for camera
(center pin positive)

12VDC Power
supply socket
(center pin positive)

Leave pot set fully
counter clockwise

RJ45 Connector for
Cat 5 audio cable