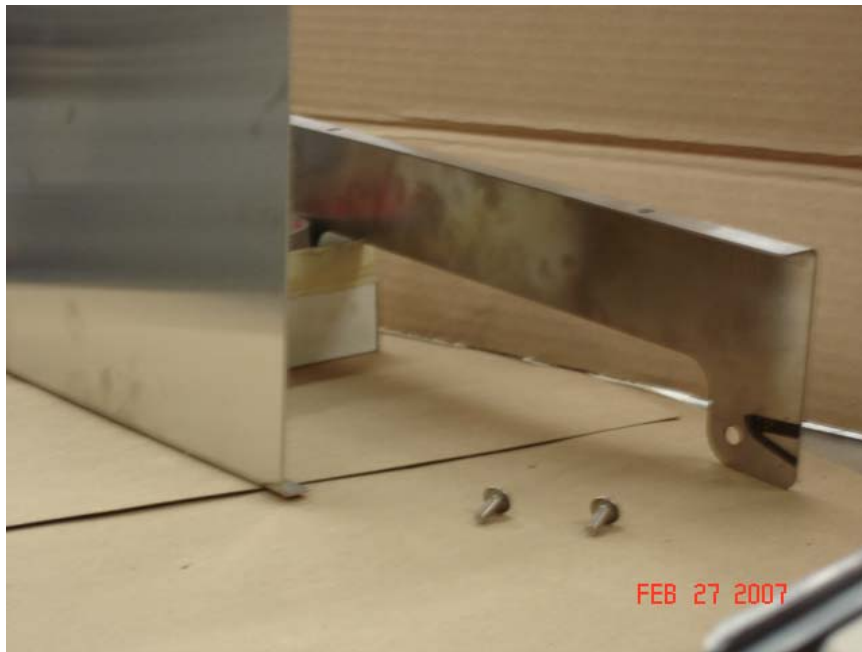


HA-47 CONTROL PANEL COVER INSTALLATION

Adding cover to units with PLC controls which did not include cover from factory.

PARTS KIT:



- (2) 10-32 screws
- (1) B6949 – Stainless Steel Mounting Bracket
- (1) B6948 – Stainless Steel Control Panel Cover

STEP 1: Remove stainless front cover from HA47 unit to expose the control panel.



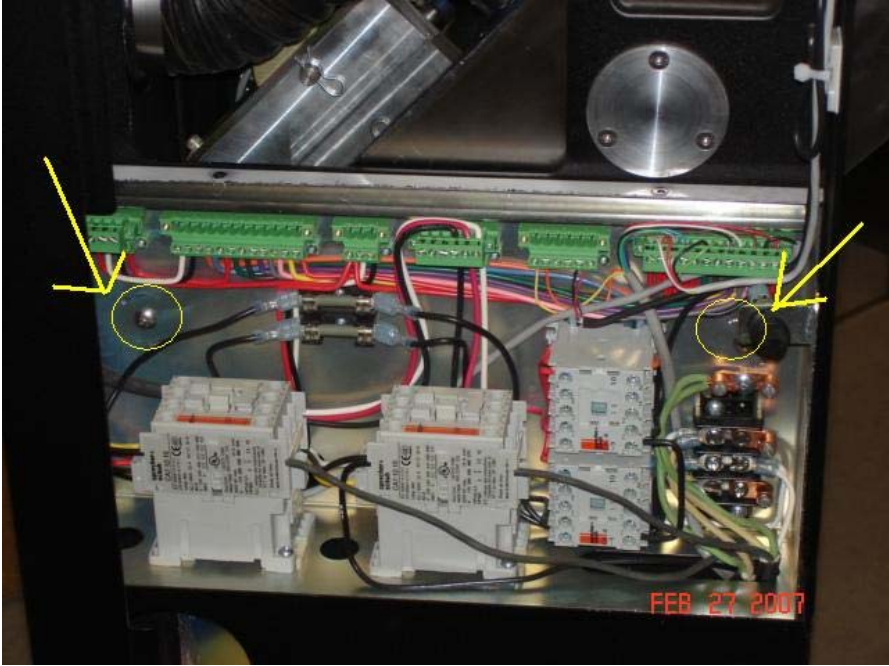
STEP 2: Remove two, 10-32 screws, mounting the control panel to the frame.



STEP 3: Insert stainless steel bracket B6949 down between the control panel and frame.



STEP 4: Align the mounting holes in the stainless steel bracket, the control panel, and the HA47 frame and re-install two mounting screws.



STEP 5: Using two, 10-32 screws, attach the cover B6948 to the holes in the bracket B6949. The cover B6948 has knock-outs to allow wires to be routed through. Seal around wires if these knock-outs are removed..

